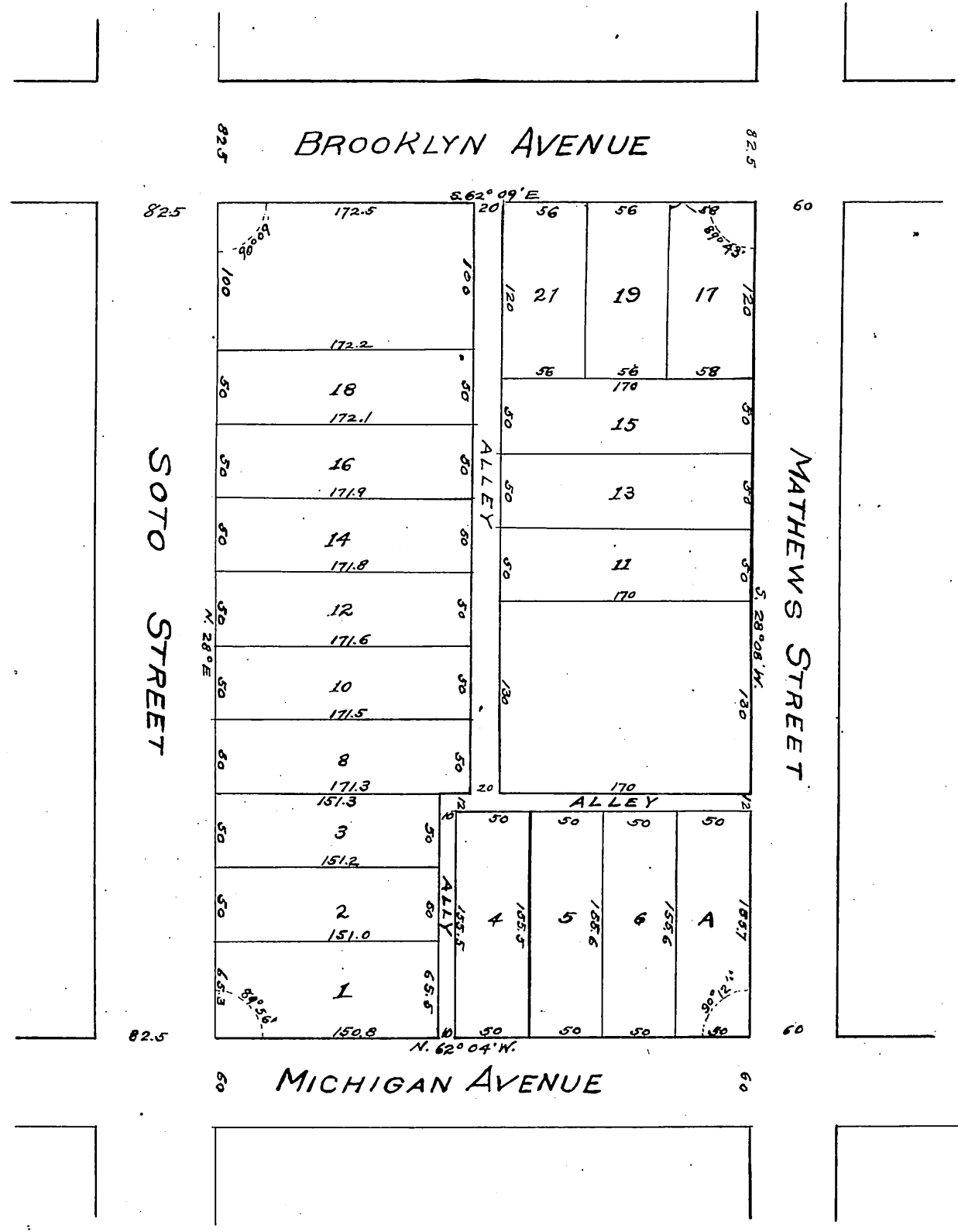


Map  
OF THE  
**RE-SUBDIVISION**  
OF THE  
**MILES TRACT**

Being Block 2 of the Mathews  
& Ficket Tract Los Angeles Cal.

Surveyed Feb 1895.  
by I. Friel.

SCALE 1 INCH TO 60 FEET.



Scale reduced to 100 ft. to 1 inch.  
Recorded Feb 18, 1895 at request  
of E.S. Chase

Compd  
C.H.C.