



THE
WEBBER, WILE & MICHAEL REPLAT

of
Lots 14 & 15 block 94 & lots 3 & 4 Blk. 91

of the
SANTA ANITA TRACT

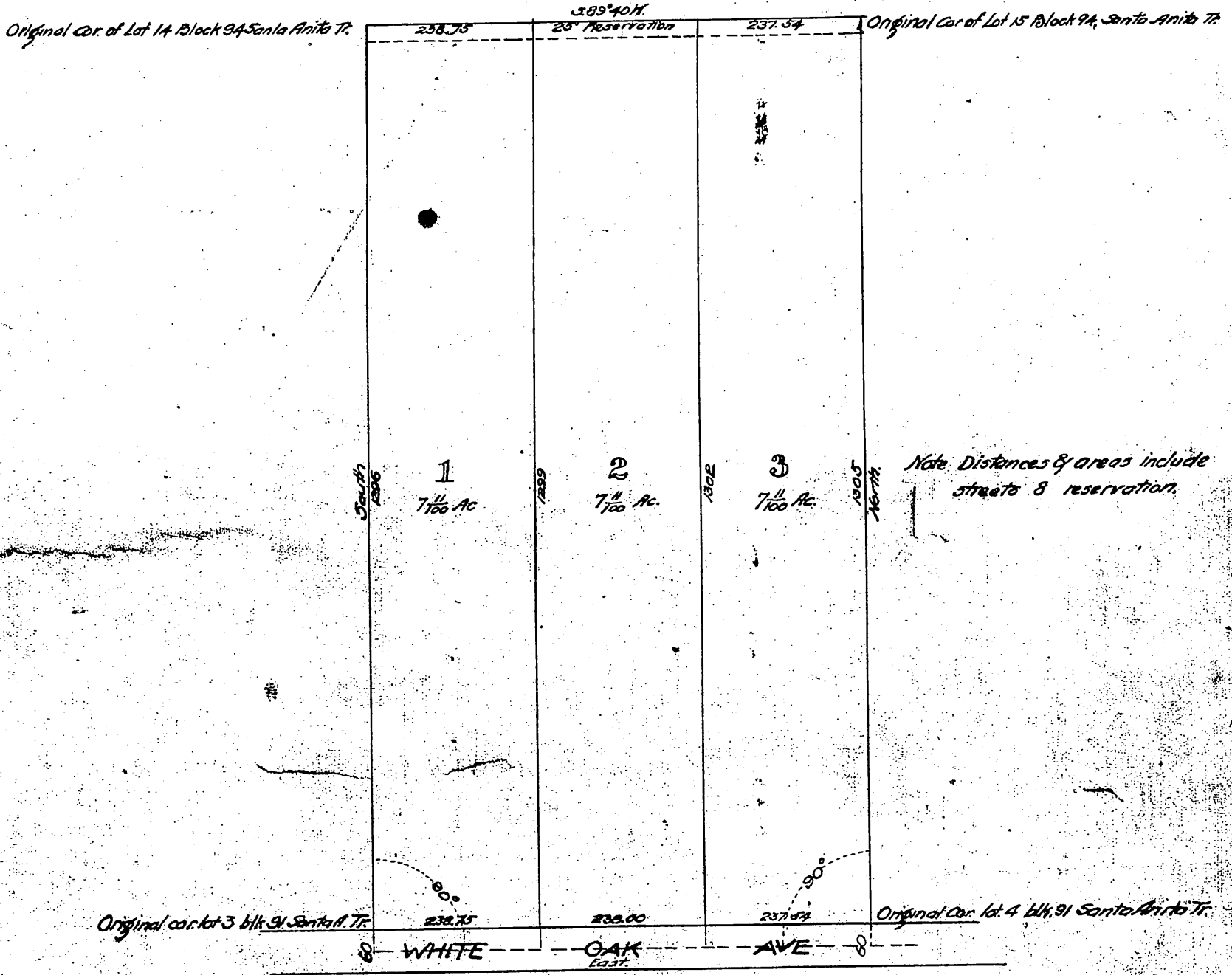
of Misc. Records of Los Angeles Co. Cal.

Book 34, page 241

Surveyed and plotted by

H. J. Stocker

Nov. 19th 1895



Simon Wile
 (owner)

NOTE: Sycamore Ave., 50' wide, dedicated August 24th 1888 on Santa Anita Tract M. R. 34-41 and 42 extends east and west across the center of this tract and it has not been vacated. Co. Sur. August 3rd 1920

Vac. part Sycamore Ave. D: 30-150 Res. 40

Recorded Apr. 5, 1895, at request of Simon Wile.

Conrad C.H.C.