

555

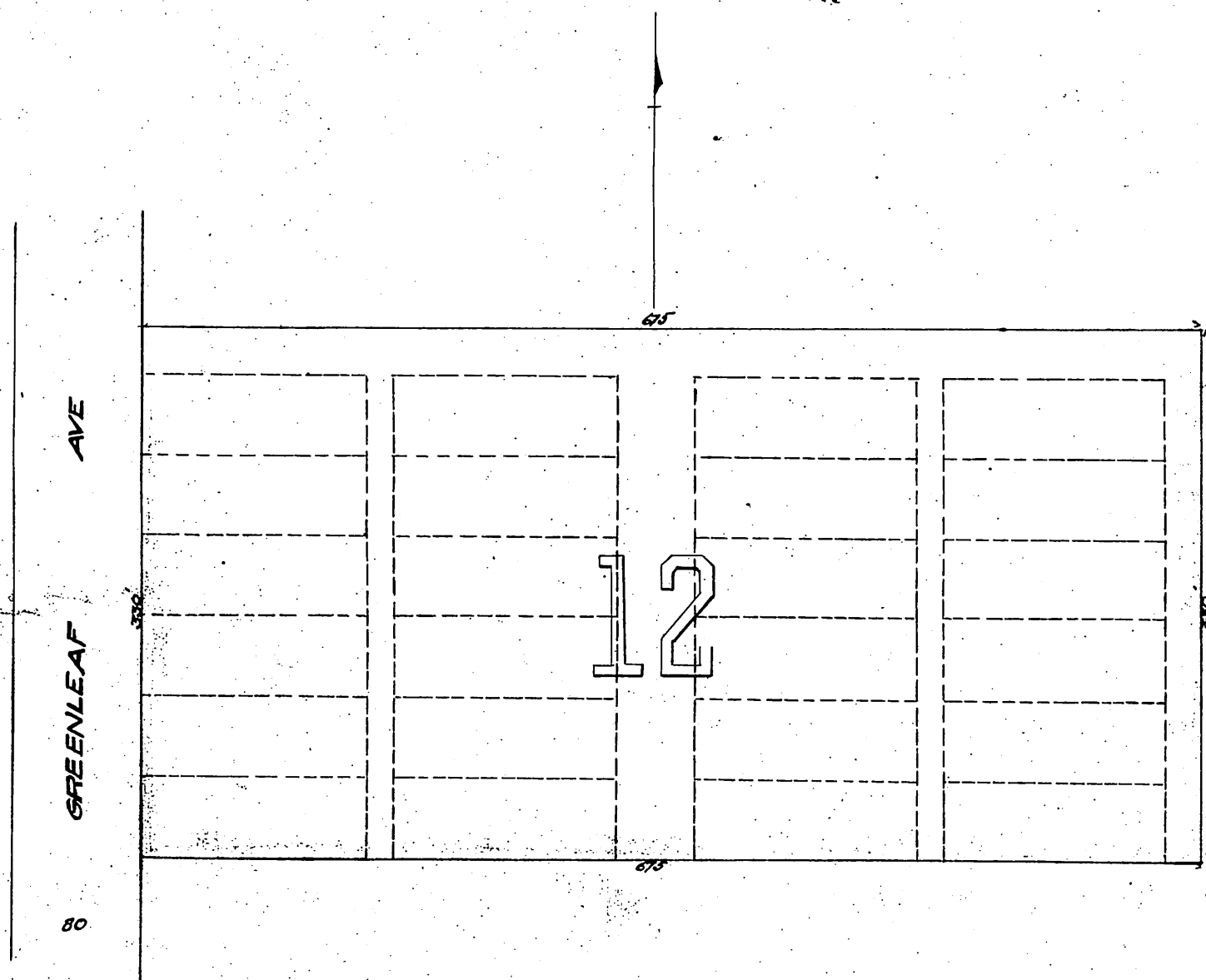
PLAT SHOWING

*J.W. Hollingsworth's Subdn.*  
*of*  
*LOT 12 IN BLK. "J" WHITTIER*  
*LOS ANGELES CO., CAL.*

*as per map in Book 31 p. 8 Misc Records, as restored to acreage; and the abandonment of Walnut St, Bright and Washington Ave's, and the alleys shown thereon, as per order of the Hon. Board of Supervisors, Mch. 1<sup>st</sup> 1895*

NOTE

*The dotted or broken black lines designate the lots, streets and alleys as shown on map Misc. Rec. 31 p. 8, and now acreage property.*



*Recorded Apr. 12 1895 at request of T. I. & T. Co.*

555  
C.A.C.