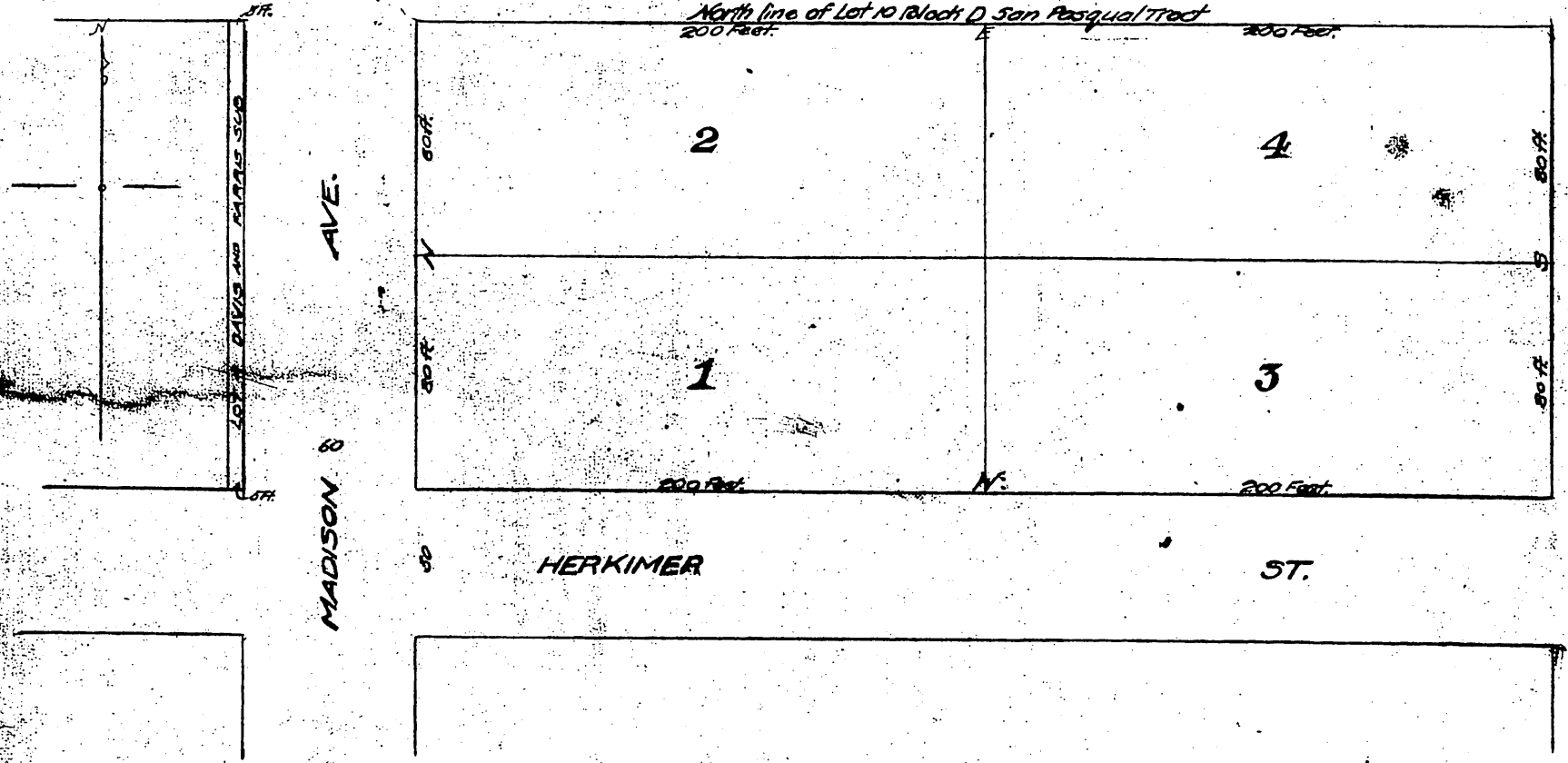


4535

EDWIN L. FARRIS REPLAT
 OF
FARRIS AND CRISTY'S REPLAT
 OF
 Lots 4, 5, 6, 7, 8 and 9
 OF
 DAVIS AND FARRIS SUBDIVISION
 OF THE
 N. 1/2 OF LOT 10, BLOCK D, S P TRACT
 Pasadena Cal.

Surveyed by
 J. W. SEDWICK
 Sept. 1891



owner,
 Edwin L. Farris

Recorded May 11 1895
 at request of E. L. Farris

*Completed
 5/11/95*