

Plat showing

Subdivision of the P.J. Brannen Tract

in the City of Los Angeles, Cal.

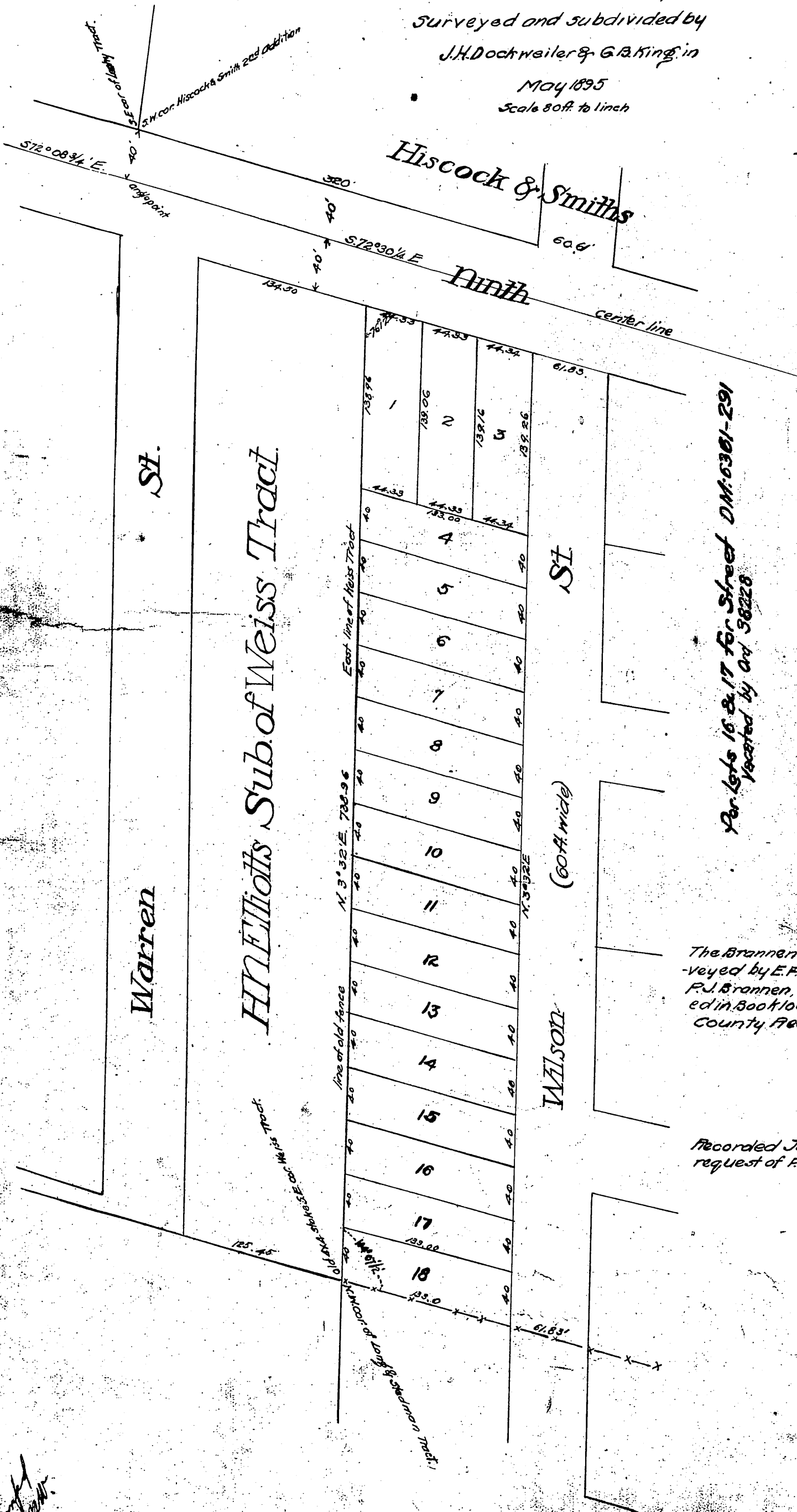
Surveyed and subdivided by

J.H. Dochweiler & G.B. King, in

May 1895

Scale 80 ft. to 1 inch

N



Per lots 16 & 17 for Street DM: 6361-291
Vacated by Ord 38228

owner
P.J. Brannen

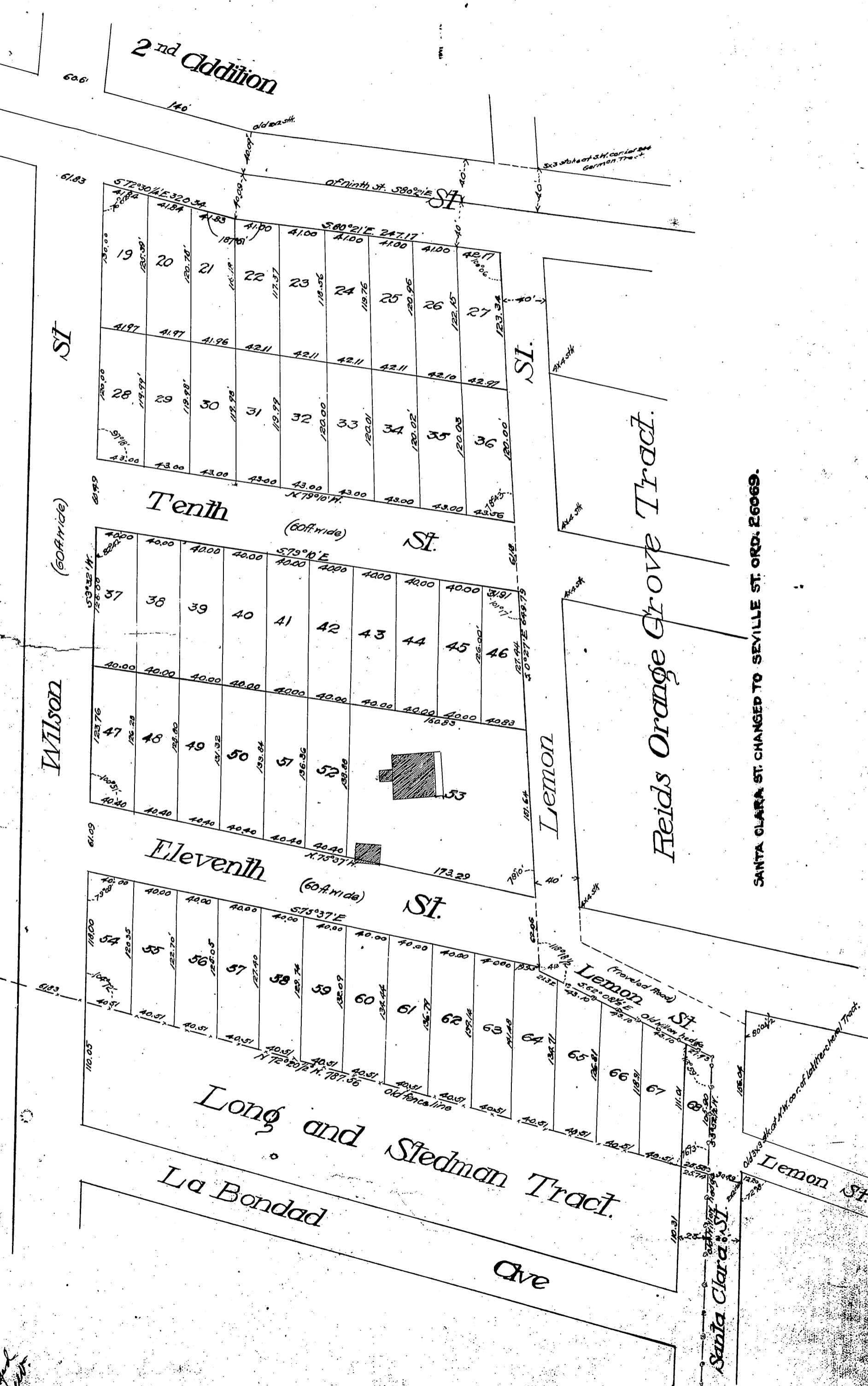
Note:
The Brannen Tract is a subdivision of the land conveyed by E.F. Rogers and M.L. Rogers, his wife, to P.J. Brannen, by deed dated Jan. 5th 1895, and recorded in Book 1006, Page 1, of Deeds, Los Angeles County Records.

Recorded Jun. 3, 1895 at request of P.J. Brannen.

(See Page 45)

Copy

4545



SANTA CLARA ST. CHANGED TO SEVILLE ST. ORD. 26069.

Copy
Chart