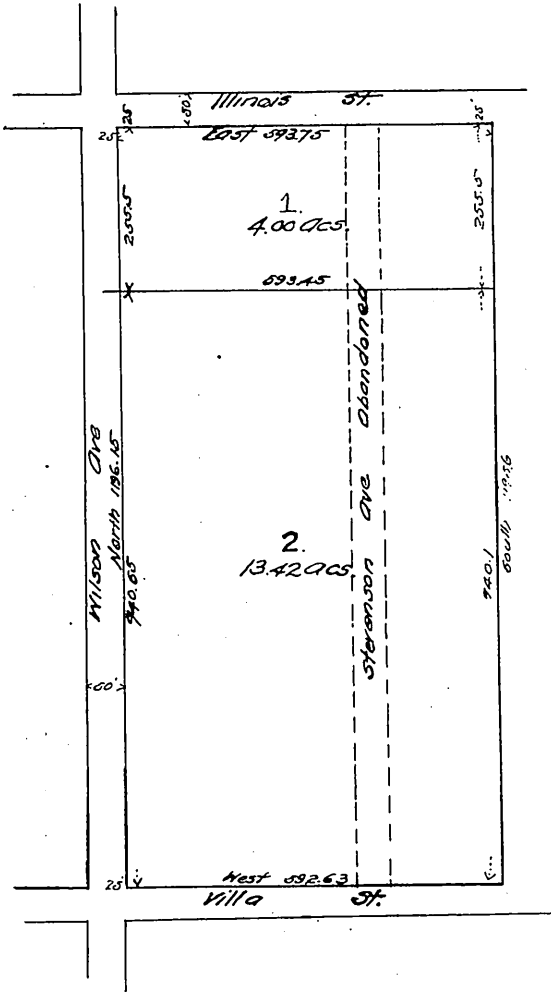


Map of the  
Villa Tract, Pasadena

Being a subdivision of a portion  
of the Grogan Tract described  
in Deeds No 167 Page No 407  
Los Angeles Records  
Surveyed Dec 1887  
by F.H. Post.



Illinois St changed to East Orange Grove Ave D:13-250  
Deed for opening Stevenson Ave D:8-101 D:3518-90  
Widening East Orange Grove Ave D:4001-151 D:8-123

Scale reduced to 300 ft to one inch  
Recorded Jun. 3 1895 at request of Mrs. C.C. Newton.

Compiled  
by F.H. Post