

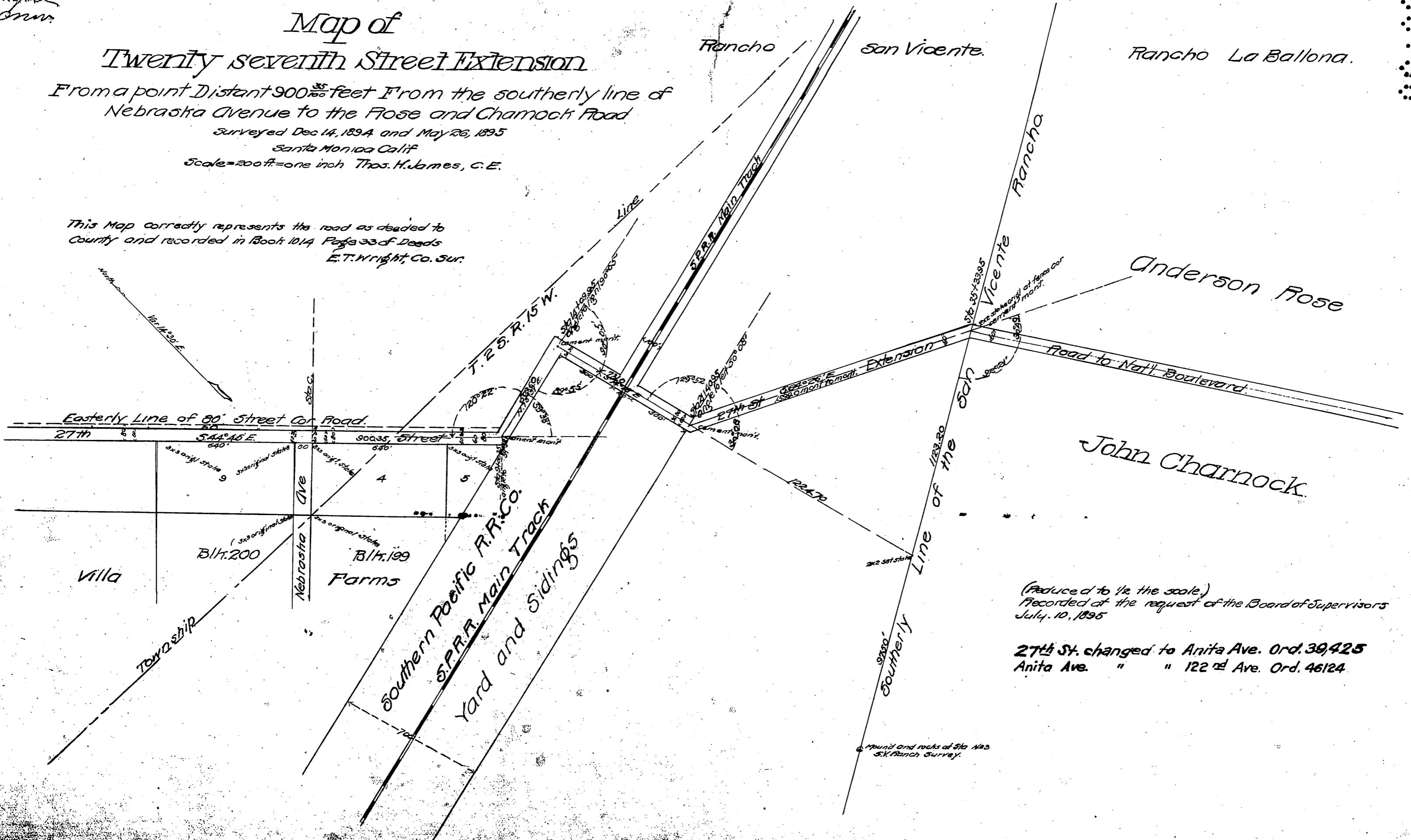
Compare
Draw

Map of Twenty seventh Street Extension

From a point Distant 900³⁵/₁₀₀ feet from the southerly line of
Nebraska Avenue to the Fose and Chamock Road

Surveyed Dec 14, 1894 and May 26, 1895
Santa Monica Calif
Scale = 200 ft. = one inch Thos. H. James, C.E.

This Map correctly represents the road as decided to
County and recorded in Book 1014 Page 33 of Deeds
E.T. Wright, Co. Sur.



(Reduce d to 1/2 the scale.)
Recorded at the request of the Board of Supervisors
July 10, 1895

27th St. changed to Anita Ave. Ord. 39425
Anita Ave. " " 122nd Ave. Ord. 46124

Found and rocks of Sta 123
S.V. Ranch Survey.