

# Map of Ocean Avenue Extension

From Montana Avenue to the Santa Monica Cañon

Surveyed Nov. 28, 1894. and May, 29, 1895

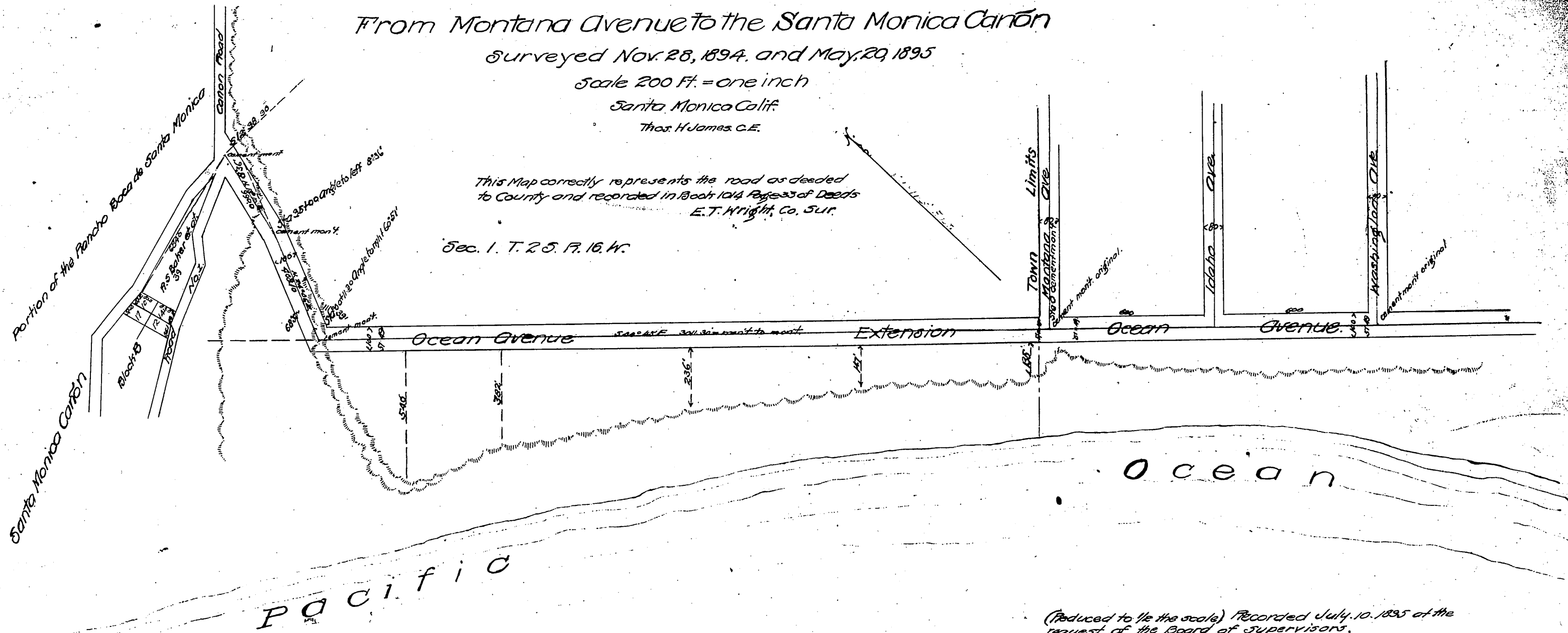
Scale 200 Ft. = one inch

Santa Monica Calif.

Thos. H. James, C.E.

This Map correctly represents the road as deeded  
to County and recorded in Book 1014 Page 33 of Deeds  
E. T. Wright, Co. Sur.

Sec. 1. T. 25. R. 16. W.



(Reduced to 1/2 the scale) Recorded July 10, 1895 at the  
request of the Board of Supervisors.

553

Conf. 2/10/95