

MAP  
OF  
MARY R. STEARNS RE-SUBDIVISION

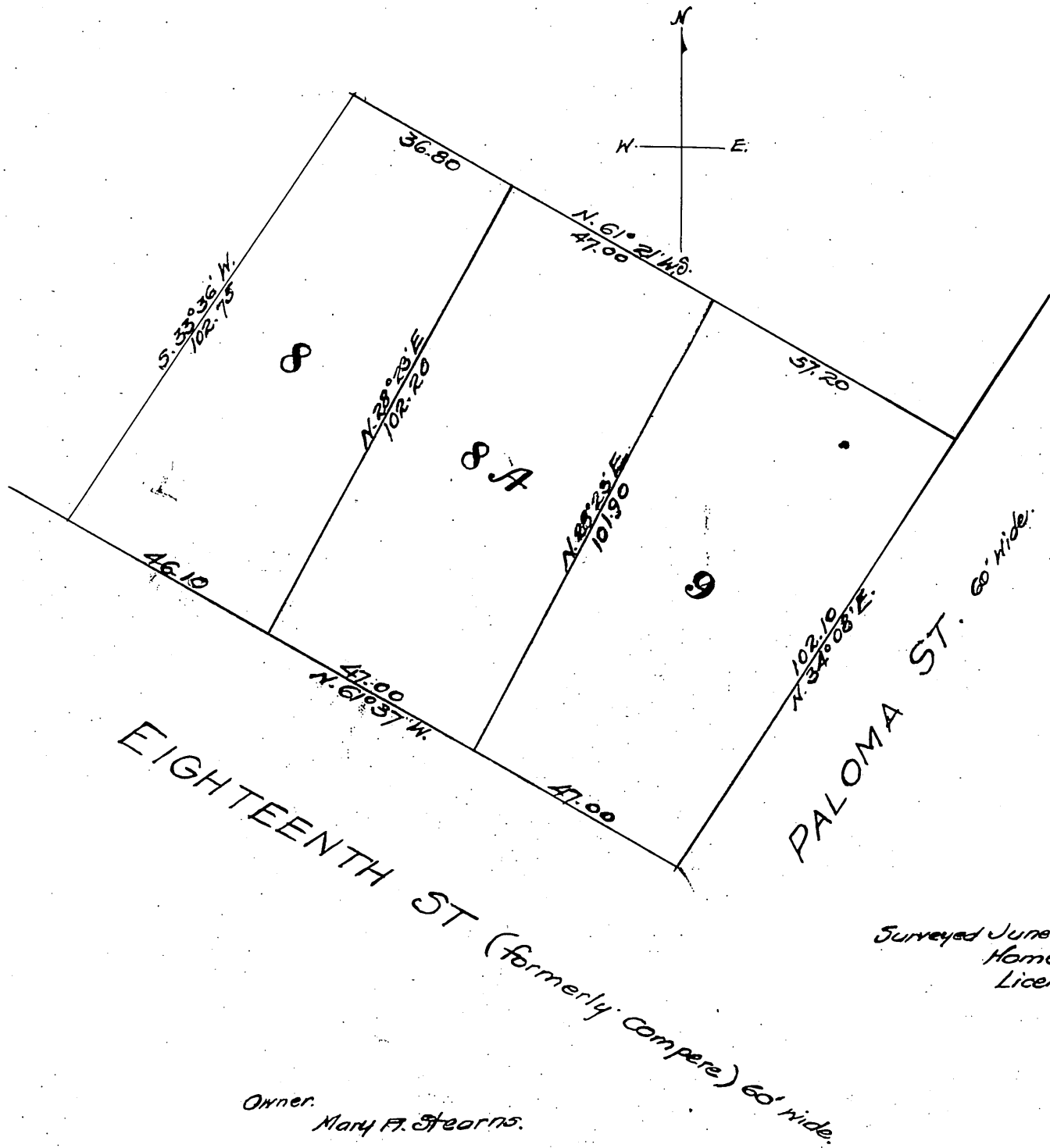
Lots 8 and 9 Block "L"  
Walnut Grove Tract.

Los Angeles City Cal.

TRUE COURSES

Var 14° 15' E.

Scale 30' to 1 inch.



Surveyed June 27 1895  
Homer Hamlin  
Licensed Surveyor.

Owner.  
Mary R. Stearns.

Recorded at request of Mary R. Stearns  
August 21<sup>st</sup> 1895.

Comped  
MRS.