

5559

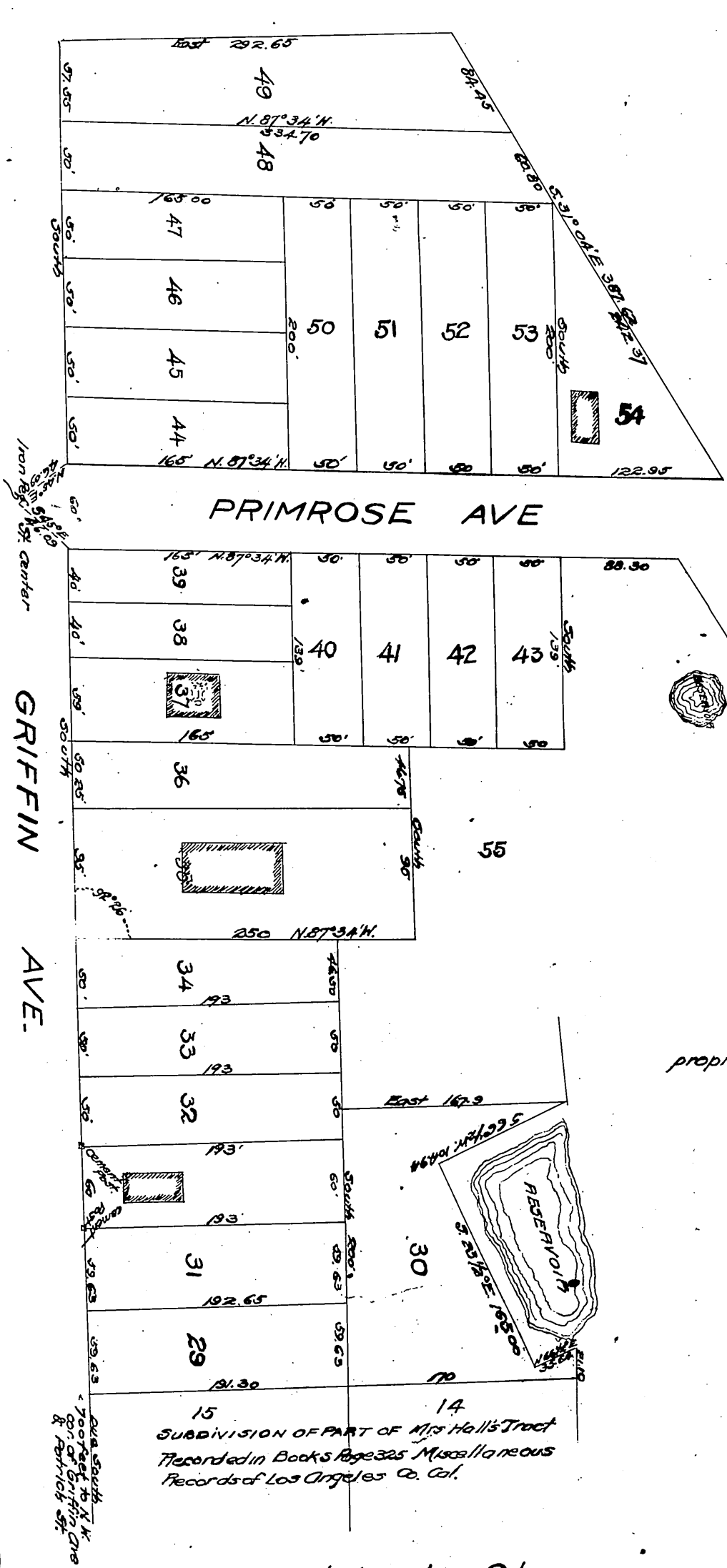
58

SUBDIVISION No 2 of part of MRS HALL'S TRACT

EAST LOS ANGELES CAL

Scale, 1 in = 50 feet
TRUE COURSES Var 143° E

SURVEYED BY
John Goldsmithy
August 1895



proprietor: Burton L. Hall.

For opening of Johnston St see
Sup. Court Case No. 46284 D. 16-14.

| | | | |
|-------------|--------------------------|---------|---------------|
| Per. lot 30 | quitclaimed by L.A. City | D:40-82 | O.R. 3496-47 |
| Per. " " | " " | D:40-83 | O.R. 3426-263 |
| Per. " " | " " | D:40-83 | O.R. 3510-16 |
| Per. " " | " " | D:40-84 | O.R. 4084-350 |

Scales reduced to 100 ft. to one inch.
Recorded Aug 27 1895 at request of
B. L. Hall.

*Comfyd
Burr*