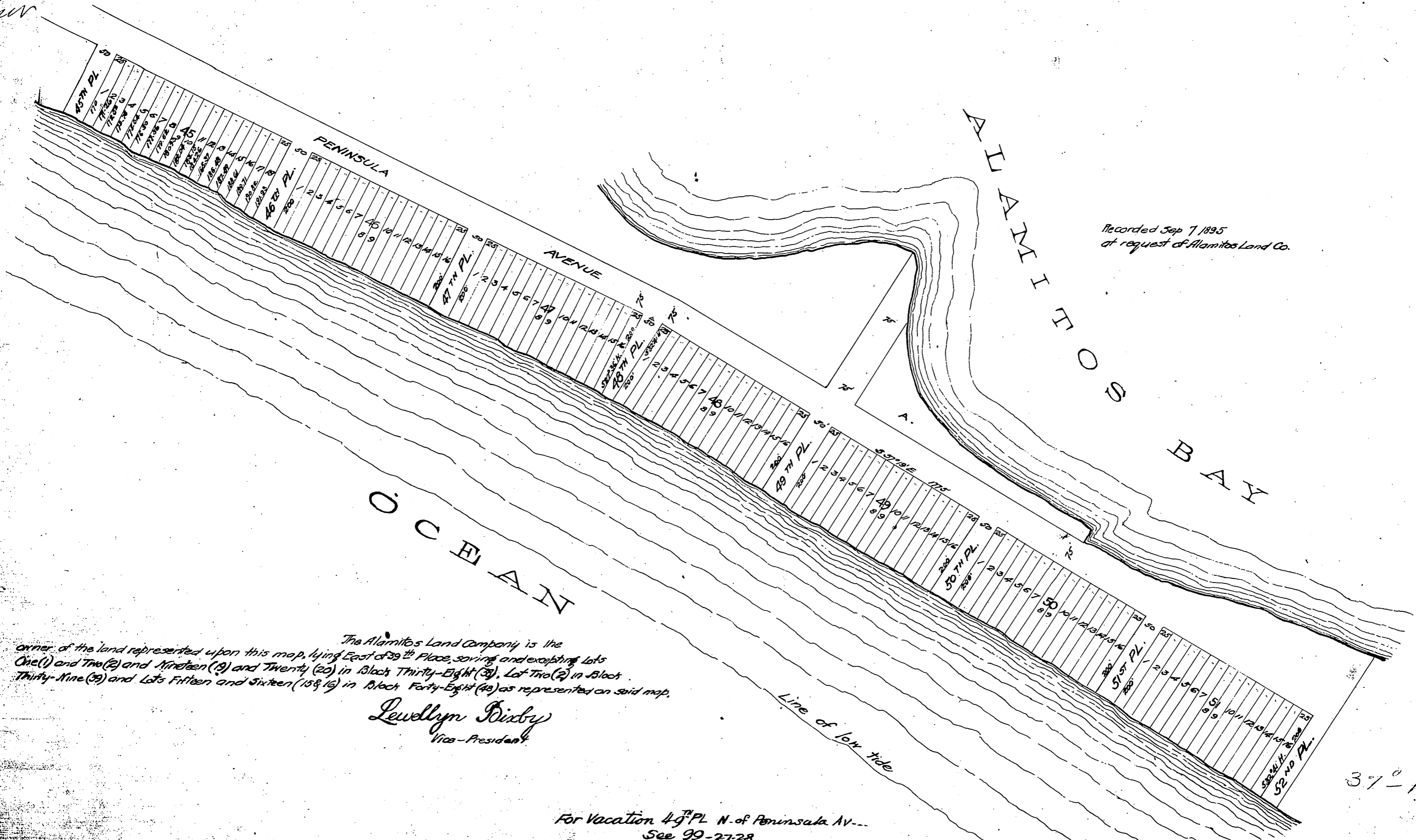
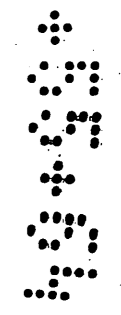


Confession  
MUN



Recorded Sep 7 1895  
at request of Alamitos Land Co.

The Alamitos Land Company is the  
owner of the land represented upon this map, lying East of 39<sup>th</sup> Place, saving and excepting Lots  
One (1) and Two (2) and Nineteen (19) and Twenty (20) in Block Thirty-Eight (38), Lot Two (2) in Block  
Thirty-Nine (39) and Lots Fifteen and Sixteen (15 & 16) in Block Forty-Eight (48) as represented on said map.

*Llewellyn Dixby*  
Vice-President

For Vacation 49<sup>th</sup> PL N. of Peninsula Av...  
See 99-27-28

37° 11'