

JEFFERSON

ST.

N.E. Cor. N.E. 1/4 of S.E. 1/4 Sec. 1 T2 S. R. 14 W. S.B.M.

PLAT  
OF THE  
SUBDIVISION OF

THE J. REY TRACT

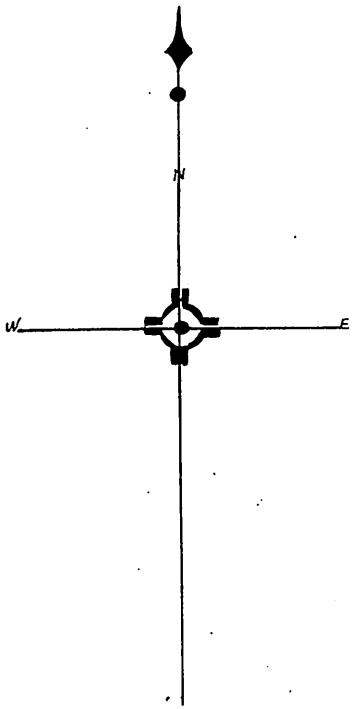
IN THE N.E. 1/4 OF S.E. 1/4 OF SEC. 1, T2 S. R. 14 W. S.B.M.

BY  
INA L. CHAMBERLIN

LOS ANGELES CO. CAL.

SCALE: 1 IN = 60 FT.

SURVEYED AND PLATTED BY S. D. WOOD, CIVIL ENGINEER, SEPT. 14 '95



70 x 40  
30 x 30

owner Ina L Chamberlin

Sec 1 T2 S. R. 14 W. S.B.M.  
S. 886725. A 7541 S.B.M.

AVE.

Sidewalk

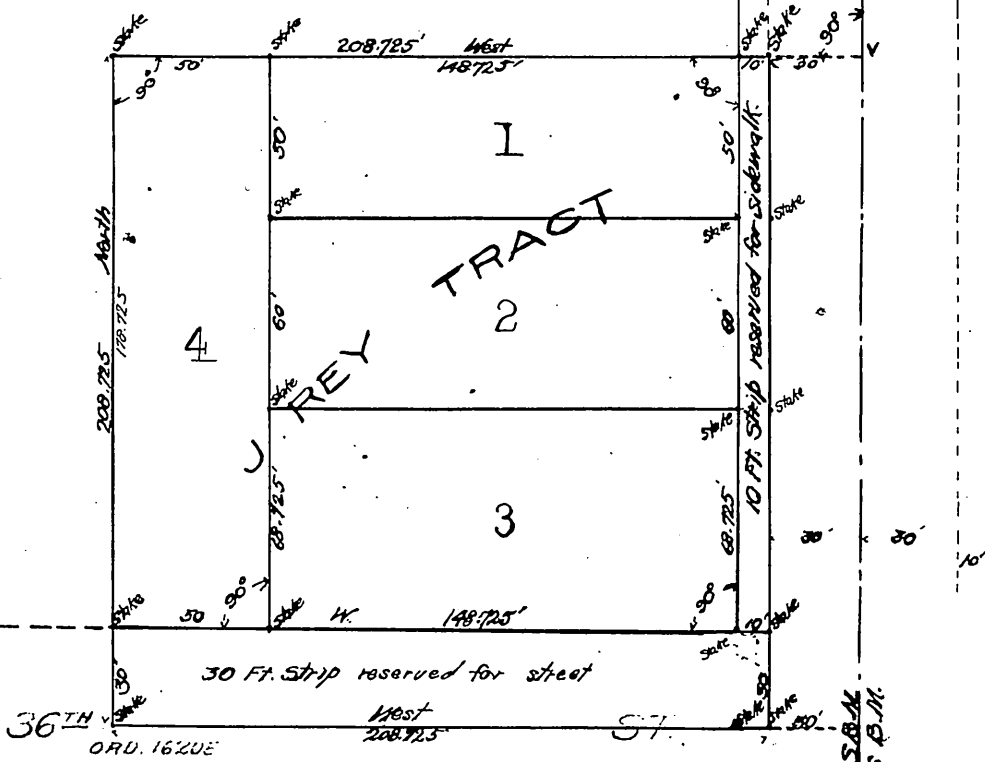
North  
600

Sidewalk

recorded Sep. 21 1895. at 12 Min. past 10 A.M.  
at request of T. I. & T. Co

Vermont Ave., name establ. Ord. 39,377

VERMONT



Range 13 W. S.B.M.  
Range 13 W. S.B.M.

Copy  
1895