

5574

Map of

Lots 13 to 24 Block G, Lots 1 to 21 Block I
 Lots 13 to 23 Block H & Lot 12 Block J
 of The

Resubdivision of The Jones Tract

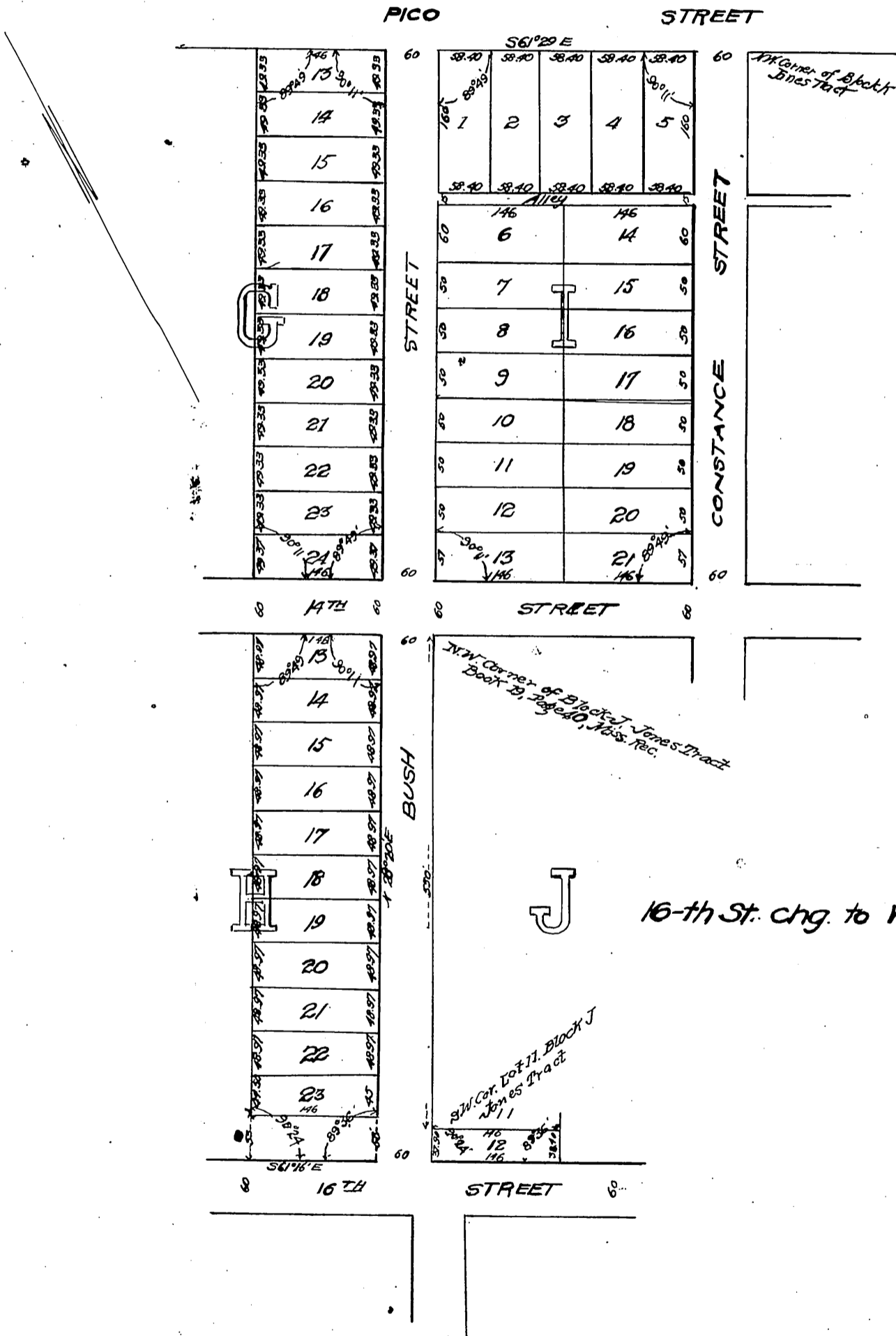
City of Los Angeles, California

A subdivision of the Easterly portion of Lot 4
 and the Westerly portion of Lot 3 in Block B
 Hancock's Survey in the City of Los Angeles

Surveyed May 1895, by
 Valentine J. Rowan
 Licensed Surveyor

True Courses

Scale, 100 feet to one inch



(Scale reduced to 150 feet to 1 inch)
 recorded Sep. 27 1895. at 24 Min. past 12 M.
 at request of M.G. Jones.

Comptroller