

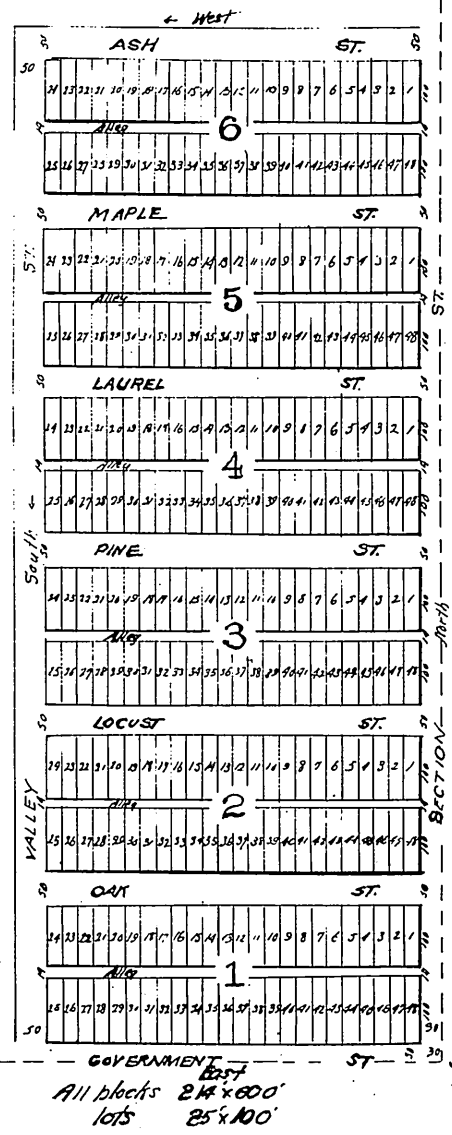
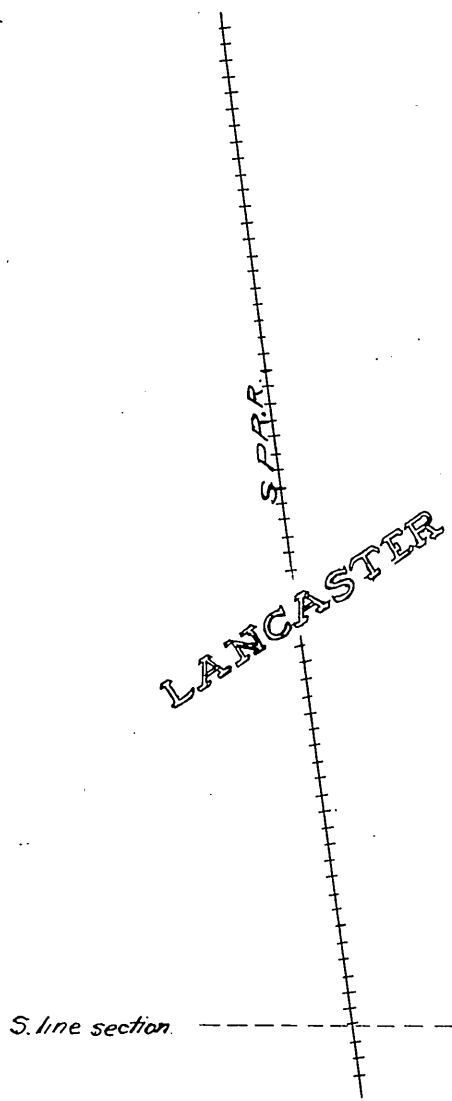
Section  
15  
T. 7 N. - R. 12 W.  
S. B. M.

# THE HERALD FIRST SUBDIVISION IN THE TOWN OF LANCASTER

IN  
SECTION 15, TOWNSHIP 7 N., RGE. 12 WEST, S.B.M.  
Los Angeles County, State of California

E. line of Sec

Scale: 1" = 400 ft.



GOVERNMENT ST. SE. Cor Section 15  
T. 7 N. - R. 12 W. S. B. M.  
All blocks 24 x 600'  
lots 25 x 100'

proprietor *Geo. J. Cochran*

(Scale enlarged to 300 feet to 1 inch)  
Recorded Oct. 12 1895, at 56 Min. past 9 P.M.  
at request of J. J. & T. Co

*Compared  
Cochran*