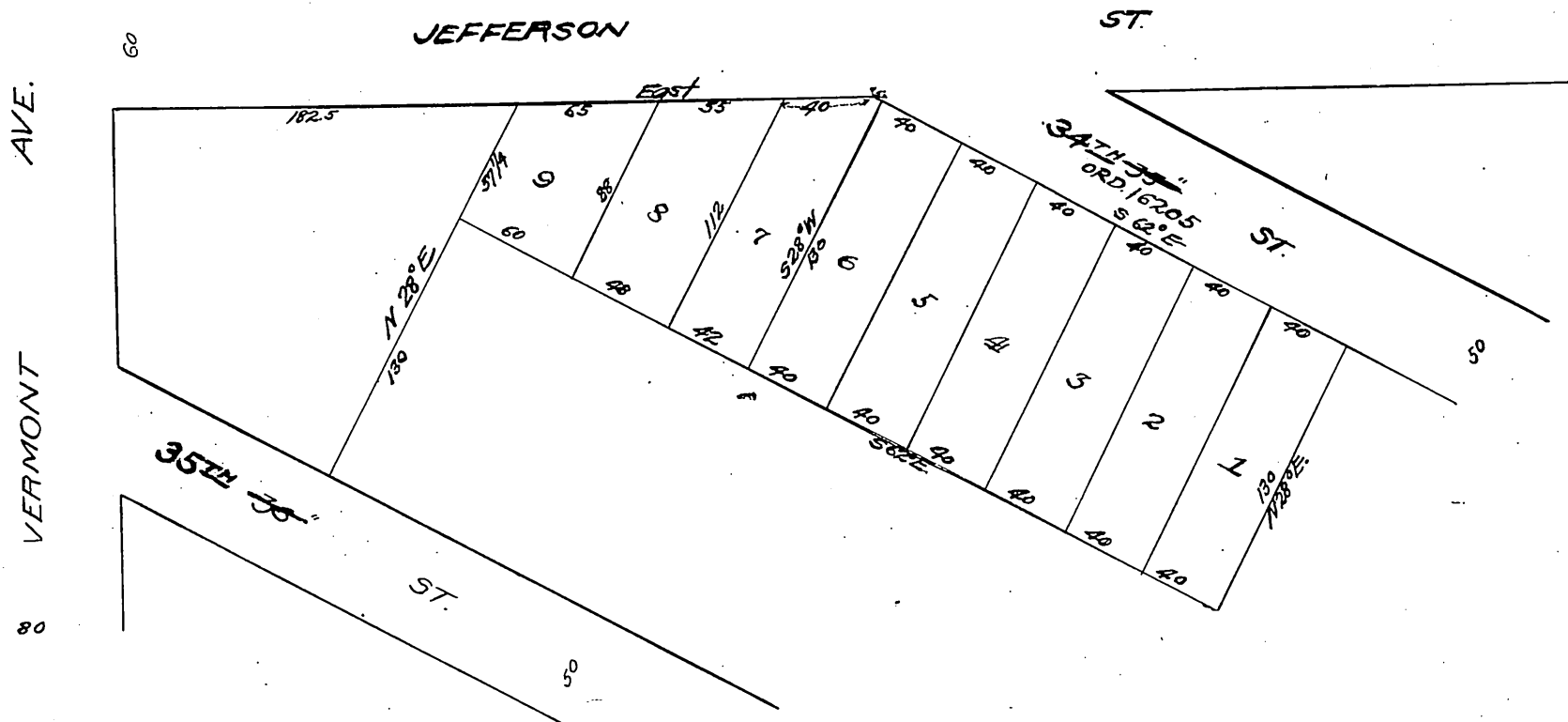


Plat of  
 Hyatt and Cockins' Re-Sub.  
 of  
 Lots 10 to 14 in Block S  
 West Los Angeles  
 Co of Los Angeles, Cal.  
 as per map Misc. Rec. B.3, ps 142 and 143

Scale 80' = 1"



I, the undersigned, do hereby declare that I am the owner of the land shown on the accompanying map, and that said map correctly represents the subdivision of my land into lots, showing dimensions and distances from initial points.

W. W. Cockins  
 Mary J. Hyatt

Por for Jefferson St. D: 54-250, O.R. 4678-320.

Recorded Oct 26 1895 at request of T.I. & T. Co.

*copy for  
 CHW*