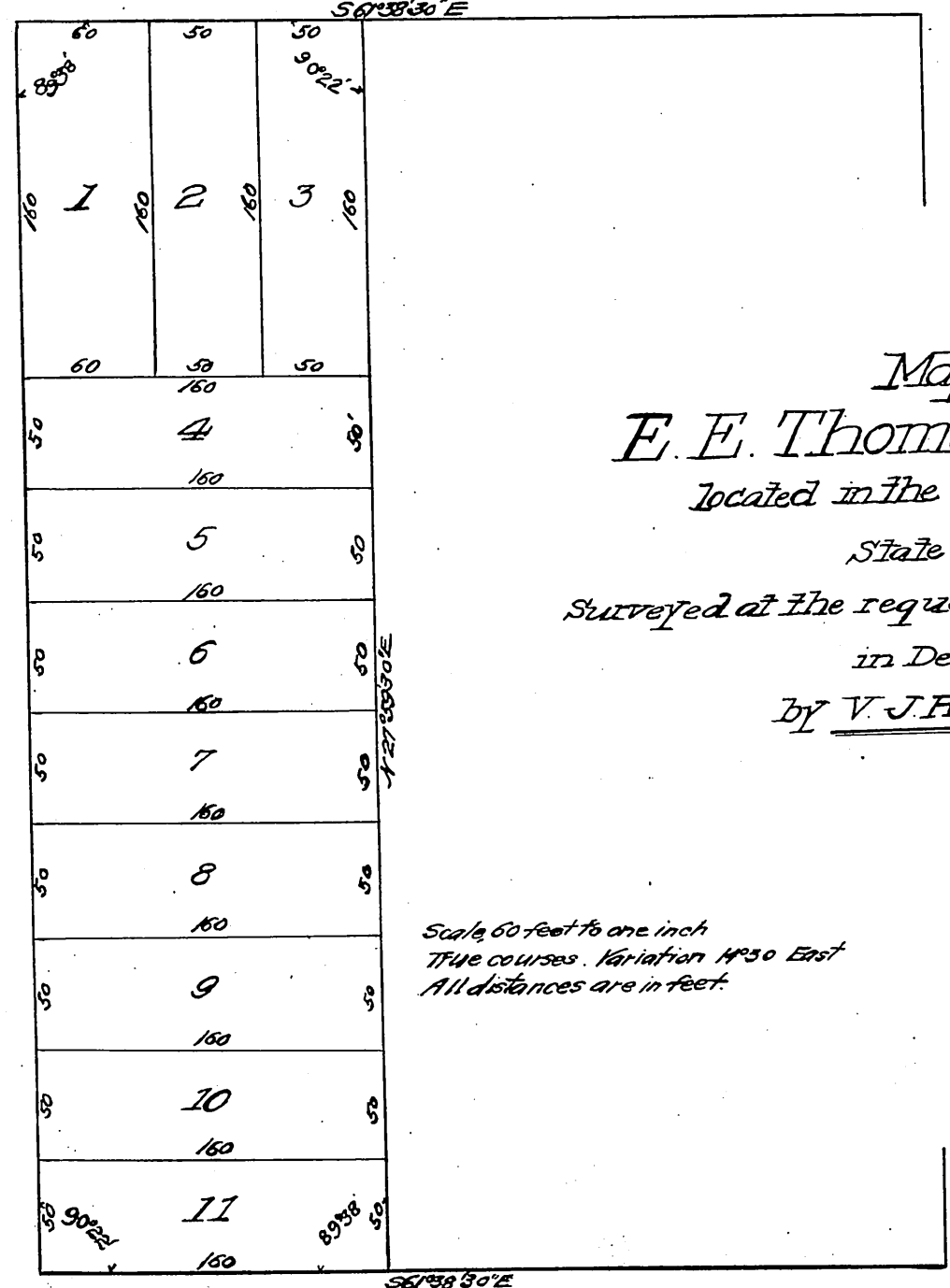


S. W. Cor. Hope St. & Jefferson St.
Per Cert. of E. E. Thomas, Figure on St. Tract

JEFFERSON STREET

West line of Hope Street as shown on Plat of Clark and Bryans Figueroa Street Tract

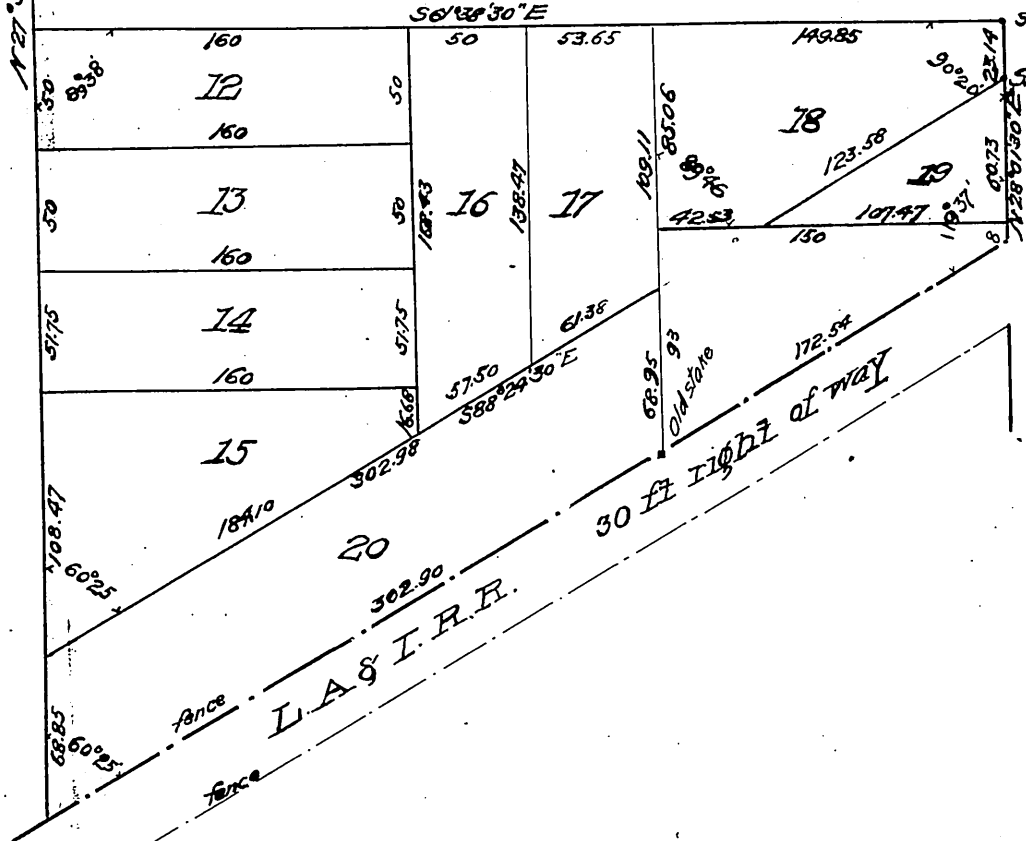
STREET



Map of the
E. E. Thomas Home Tract
 located in the City of Los Angeles
 State of California
 Surveyed at the request of Elizabeth E. Thomas
 in December 1895
 by V. J. Rowan, Surveyor

Scale, 60 feet to one inch
 True courses. Variation 14°30' East
 All distances are in feet.

36TH STREET



State for this corner set 14' Easterly of true corner
 State for this corner set 14' Easterly of true corner

SANTA MONICA AVE.

L.A. & I.R.R.

30 ft right of way

Elizabeth E. Thomas-own

(Scale reduced to 80 feet to 1 inch)
 Recorded Dec. 6 1895
 at request of Mrs. E. E. Thomas.

Handwritten signature/initials