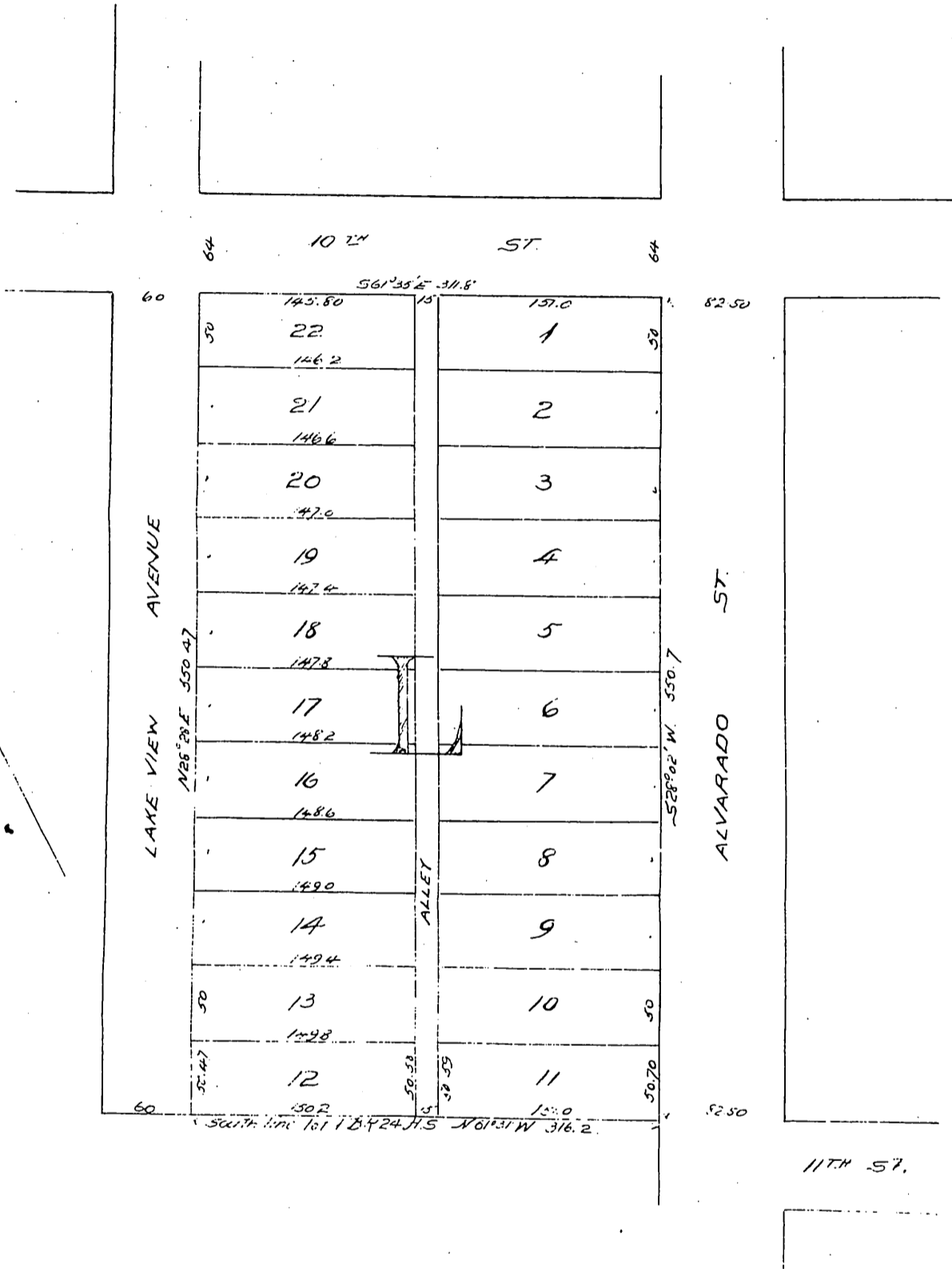
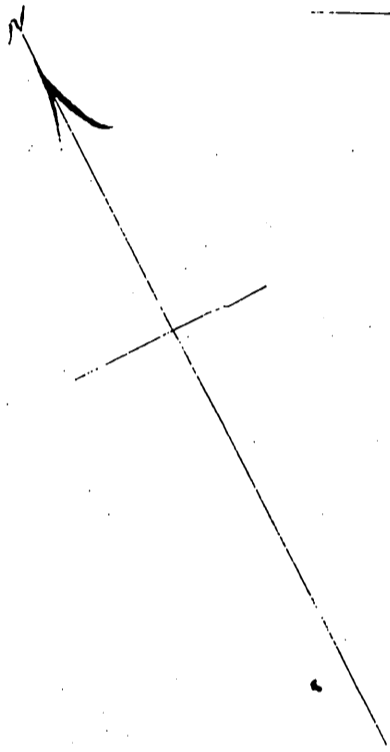


Map of
a portion of the
Bonnie Brae Tract

Being a subdivision of a portion of
Lot 1 Block 24 H.S.

Los Angeles, Cal
Surveyed May 25th 1895 by
Pillsbury & Skinner
Scale 100 = 1 in.



Given in presence of

Still, true and correct copy of the original
Recorded, Dec. 21, 1895 at 30 Min. past 1 P.M.
at request of SA. Rendall

E. C. Halpman County Recorder.

By E. T. Wright.

Co. Sur. and ex-officio Dep. Co. Rec.