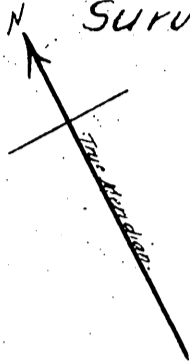
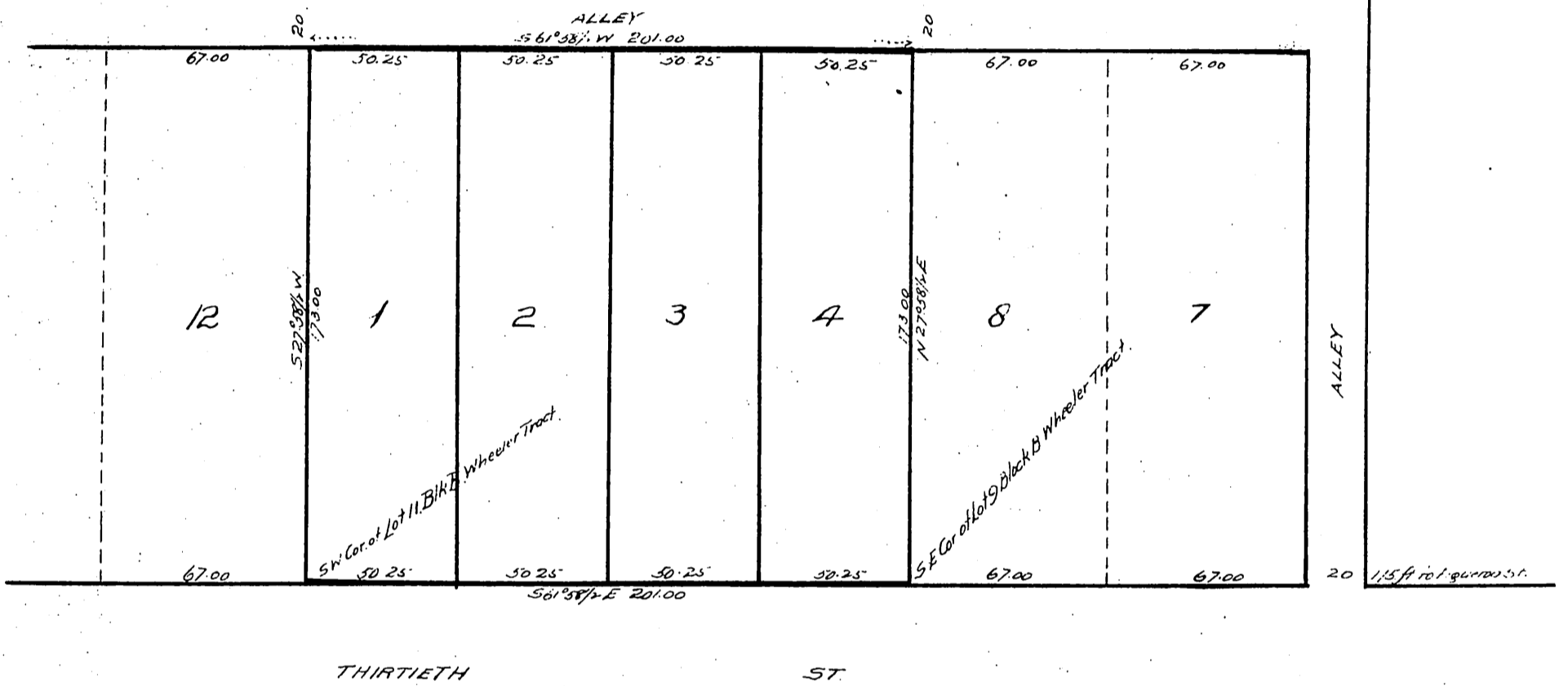


Plat showing
 Joseph May's Re-subdivision
 of Lots 9, 10 & 11 Blk B, Wheeler Tract.
 Los Angeles City, Cal.

Surveyed by J.H. Dockweiler & G.B. King in Jan 1896
 Scale 50ft = 1 inch.



B/K B Wheeler Tract.



Owner:
 Joseph May

A full true and correct copy of the original
 recorded Jun 18, 1896 at 10 Min past 4 PM
 at request of R. Aitschul.

E.C. Hodgman, County Recorder

By E.T. Wright

Co. Sur. and ex-officio Dep. Co Rec.