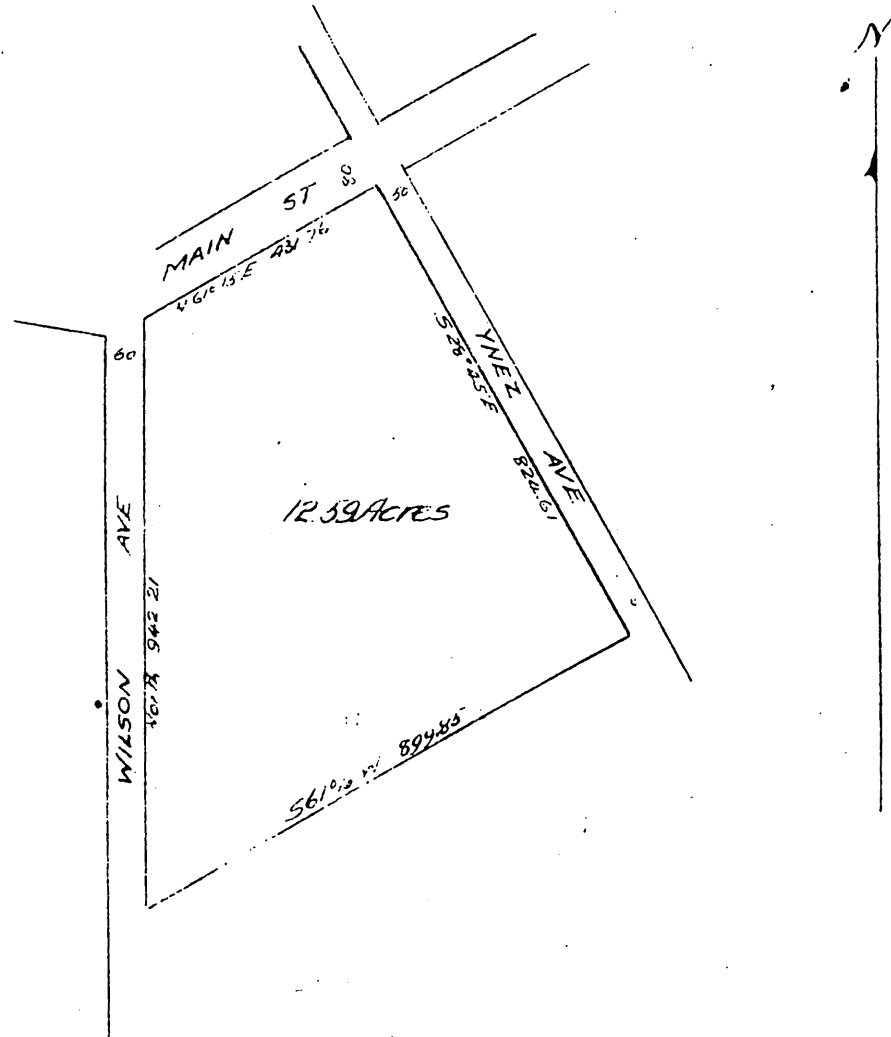


Locke's Sub. of The Hildebrand Tract, Alhambra

Miscellaneous Records, Book 24, Page 41
as vacated and restored to acreage by
Board of Supervisors
being Lots 7 & 8 Range 14 and Lot 8 Range 14 1/2 of
Alhambra Addition Tract.
as per Miscellaneous Records Book 5 Page 298
Scale 1 inch = 200 feet.



Minute Book 21 page 211

January 22nd 1896.

In re Vacation of lots 7 and 8 Bartlett Street }
in Hildebrand tract Alhambra } this being the time regularly set by order of this Board, and publication
of notice thereof for hearing herein, Chas Hildebrand appears and is
sworn and examined and no protest having been filed, upon motion of Supervisor Woodward, duly seconded
and carried, it is ordered that Vine Street and Bartlett Street in Locke's Subdivision of the Hildebrand Tract in
Alhambra Los Angeles County California, be and the same are hereby vacated and abandoned, and it is further
ordered that all the lots in said subdivision be and the same are hereby restored to acreage conditional upon
the recording of a map in the office of the Recorder of this County showing all property as affected by this order.

Attest, the and correctness of the original
order Feb. 17 1896 at 40 Min past 1 P.M.
at request of C. Hildebrand

E.C. Chapman County Recorder
By E.T. Wright
S. Sec and ex officio Dep. Co. Rec.