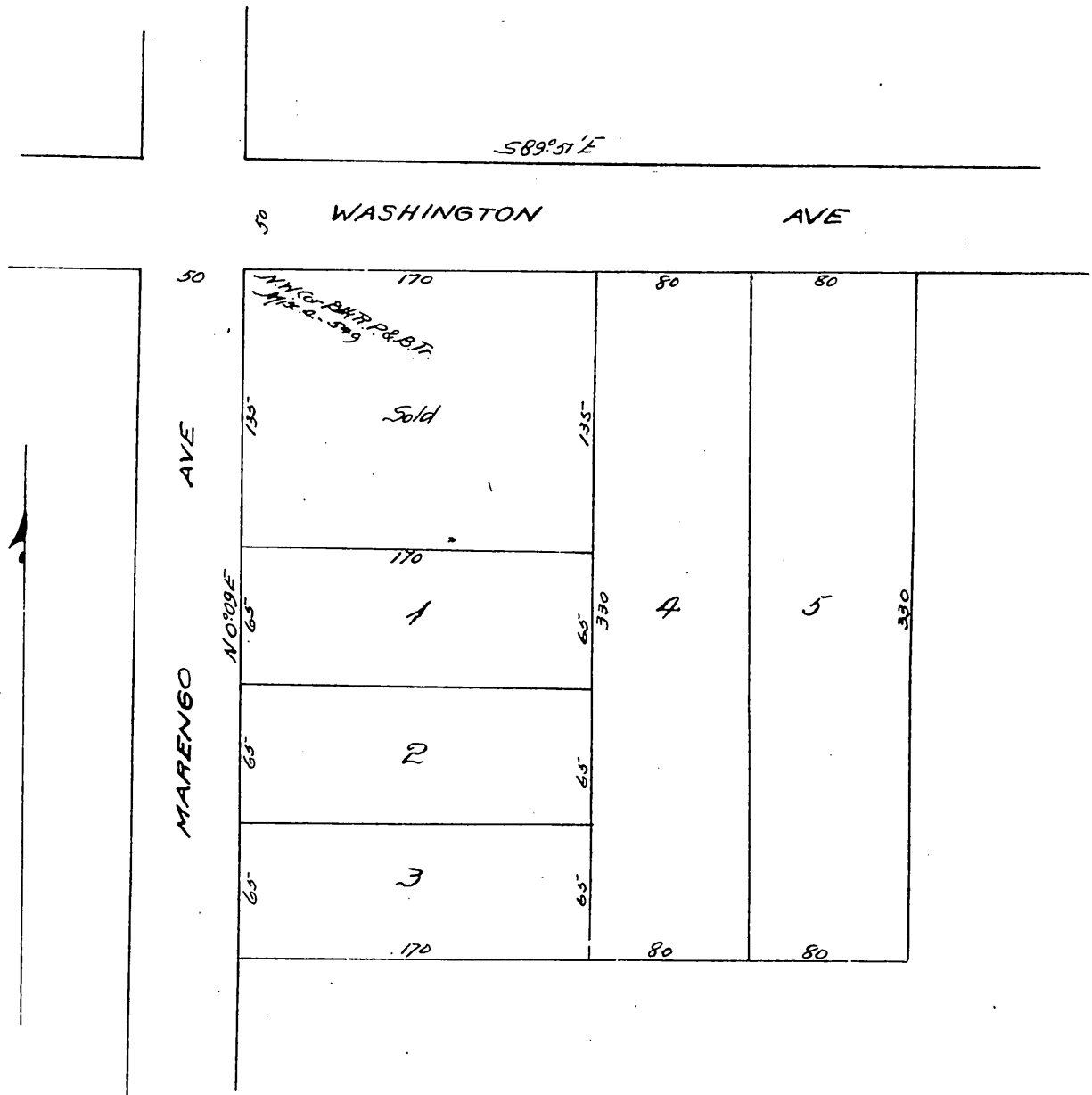


Plat of
 Burger's Subdivision
 of part of
 Block R of the Painter and Ball Tract
 Los Angeles Co., Cal.



Owner:
 William C. Burger

A full, true and correct copy of the original.
 Recorded Feb 26 1896, at 44 Min. past 11 A.M.
 at request of R.E. Biles

E.C. Hodyman, County Recorder

By E. T. Wright

Co. Sur. and ex-officio Dep. Co. Rec.