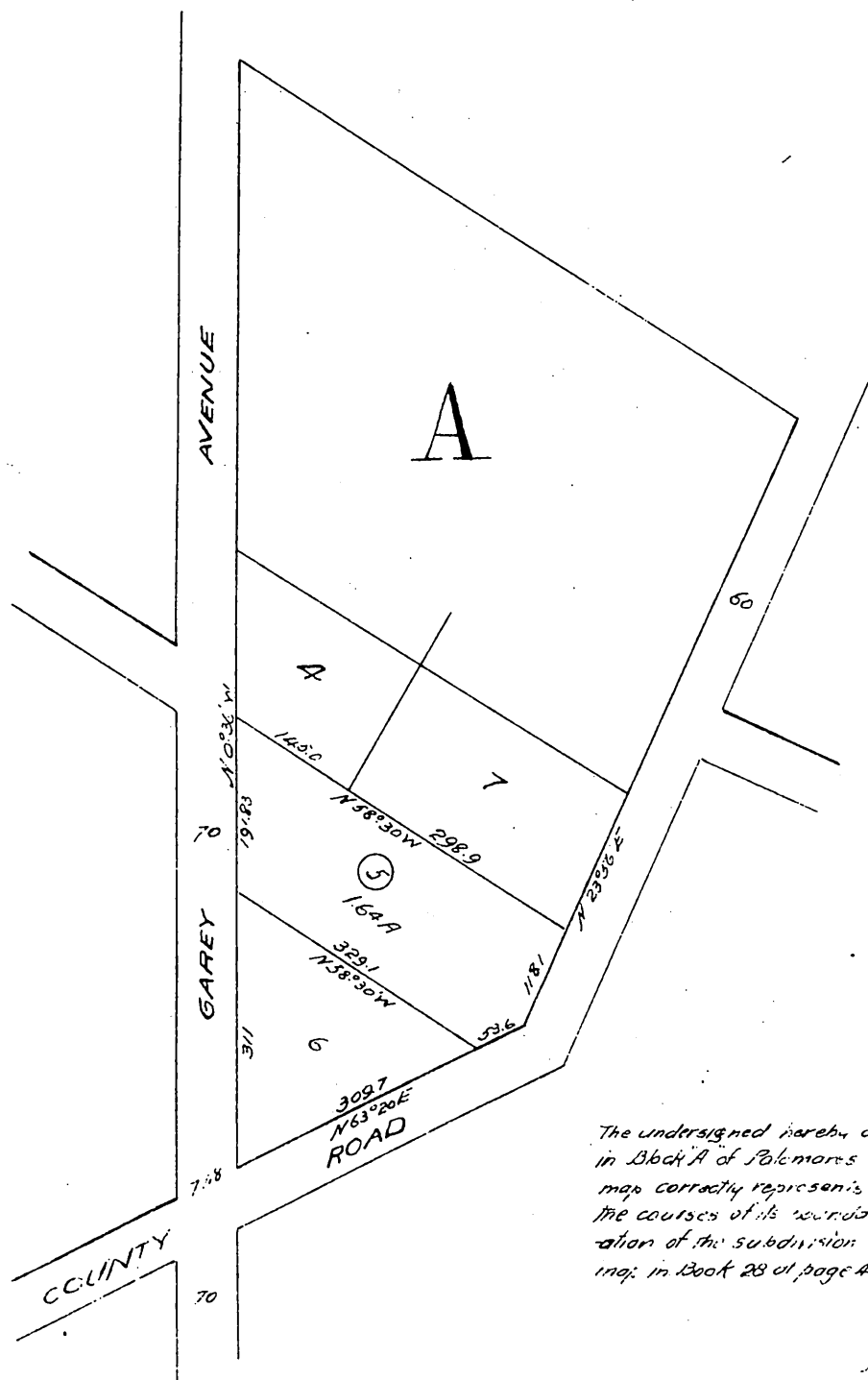


Map of Lot 5 in Block "A" of The Palomares Tract Pomona, Cal.

Showing reversion to acreage of M.C. Weller's Subdivision of said Lot 5 appearing in Book 28, at page 41 of Miscellaneous Records of Los Angeles Co. Cal.



The undersigned hereby declares that it is the owner of lots 4, 5 & 6 in Block A of Palomares Tract shown on this map; and that said map correctly represents the dimensions and area of said Lot 5 and the courses of its boundary lines, and it hereby expresses its repudiation of the subdivision heretofore made of said Lot 5 as shown by map in Book 28 at page 41 of Miscellaneous Records of Los Angeles County

Pomona Land and Water Co.
By B. J. Nichols. Pres.

A full, true and correct copy of the original
Recorded Feb 28 1896, at 5:30 AM, page 12 M
at request Pomona Land W Co
E. C. Holman County Recorder

By E. T. Wright
Clerk and ex-officio Dep. Co. Rec.