

N.E. Cor. of the Orchard Villa Tr.
N.W. Cor. of the Hudson Orange Tr.

JEFFERSON

ST.

Old State Bank A.
N.W. Cor. Bank A.



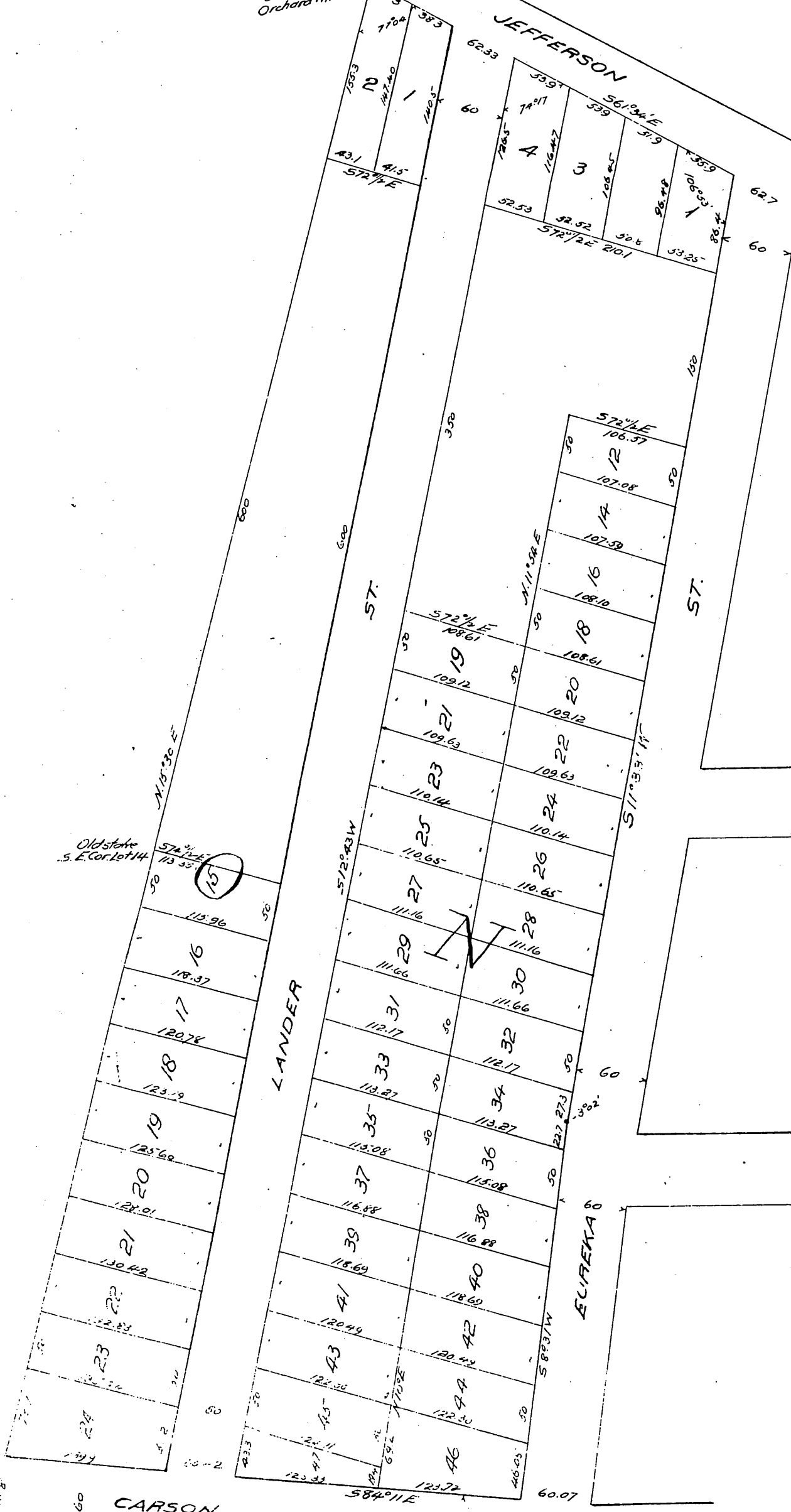
Old State S.E. Cor. Lot 14

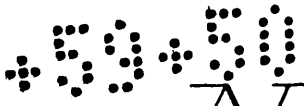
LANDER

EUREKA

CARSON

Owner: Edward Bouton



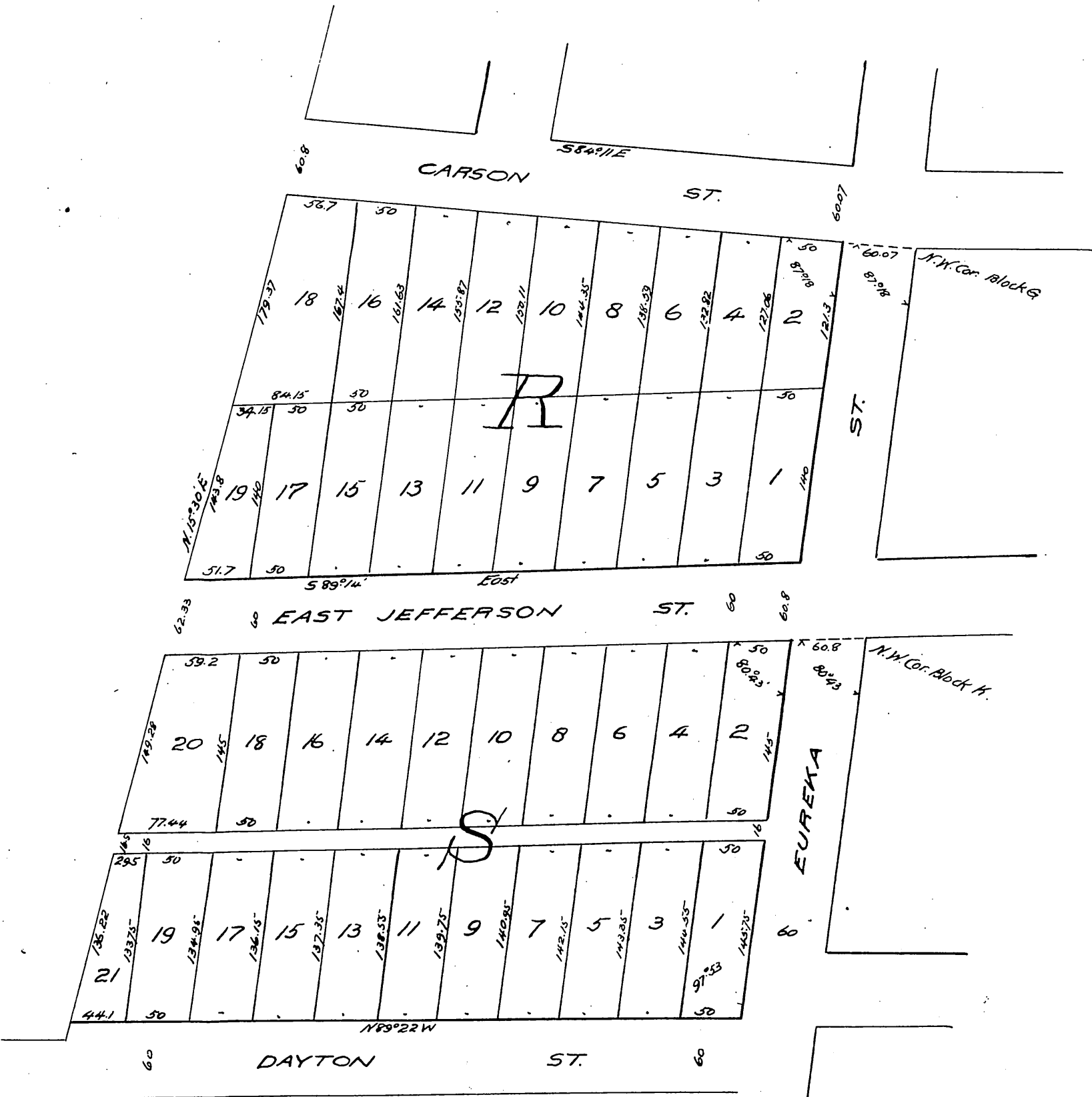


Map of part of Nadeau Orange Tract

Los Angeles, Cal.

showing Re-subdivision of Blocks P & Q
and corrected map of
Lots 1, 3, 4, 12, 14, 16, 18, 19 to 47 inclusive Blk N
Lots 1, 2, 15 to 24 inclusive Blk O
Scale 1"=100ft.

Surveyed in Feby. 1896 by Fremont Ackerman C.E.



Owner: Edward Bouten

A full, true and correct copy of the original
Recorded Feb 29 1896, at 15 Min. past 1 P.M.
at request of T.I. & T.Co.

E.C. Hodgman, County Recorder.

By E. T. Wright.

Co. Sur. and ex-officio Dep. Co. Rec.