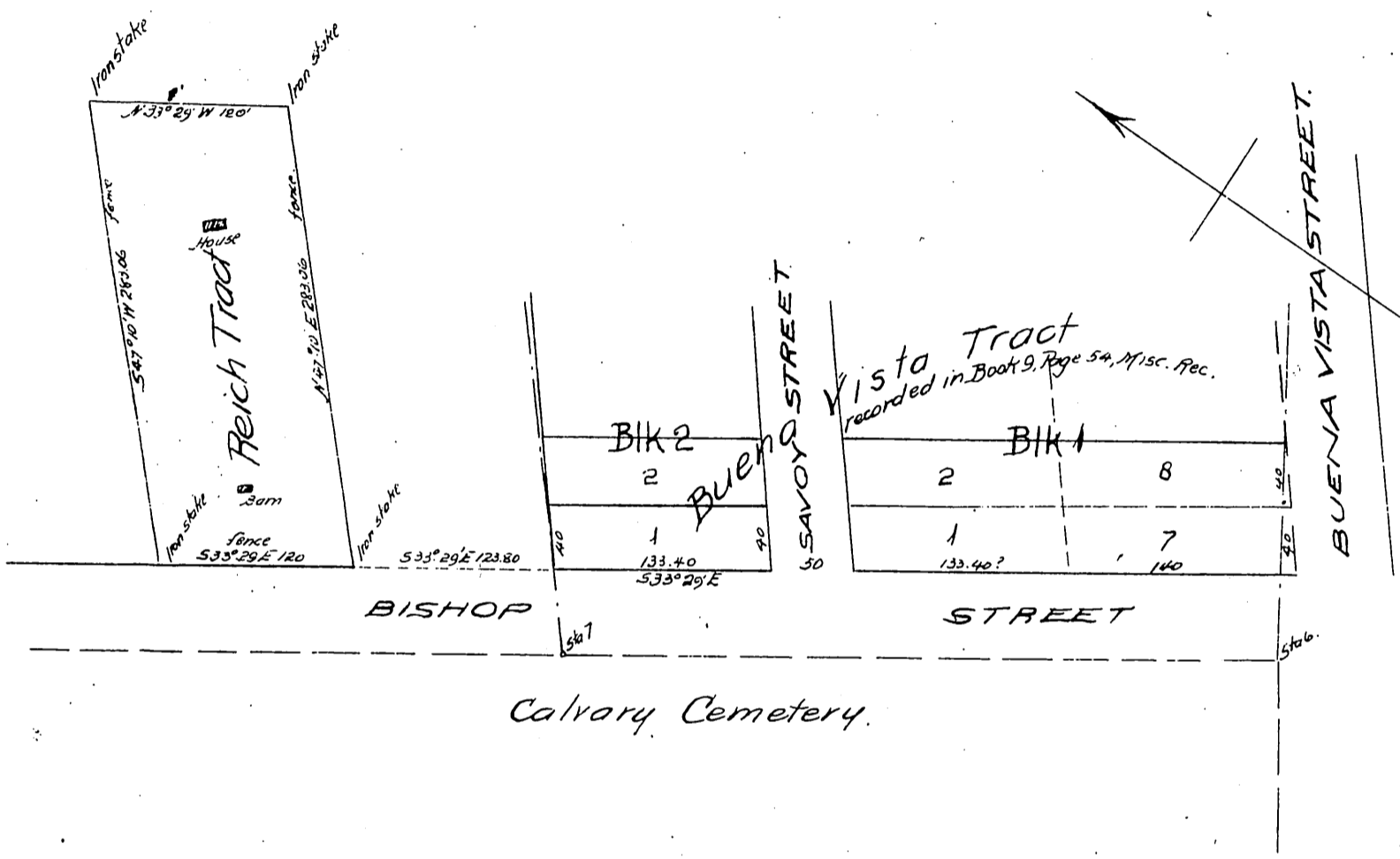


Map showing The Reich Tract

as surveyed by me in Feb 1896
at request of Henry Reich.
Los Angeles City, Cal.

J. A. Bernal
Surveyor
Scale 30 ft to one inch.



Owner: Henry Reich.

A full, true and correct copy of the original
Scale reduced to 100 feet to one inch)
Recorded Apr 9 1896, at 40 Min. past 3 P.M.
at request of H. Reich.

E.C. Hodgman, County Recorder

By E.T. Wright

Co. Sur. and ex-officio Dep Co. Rec.