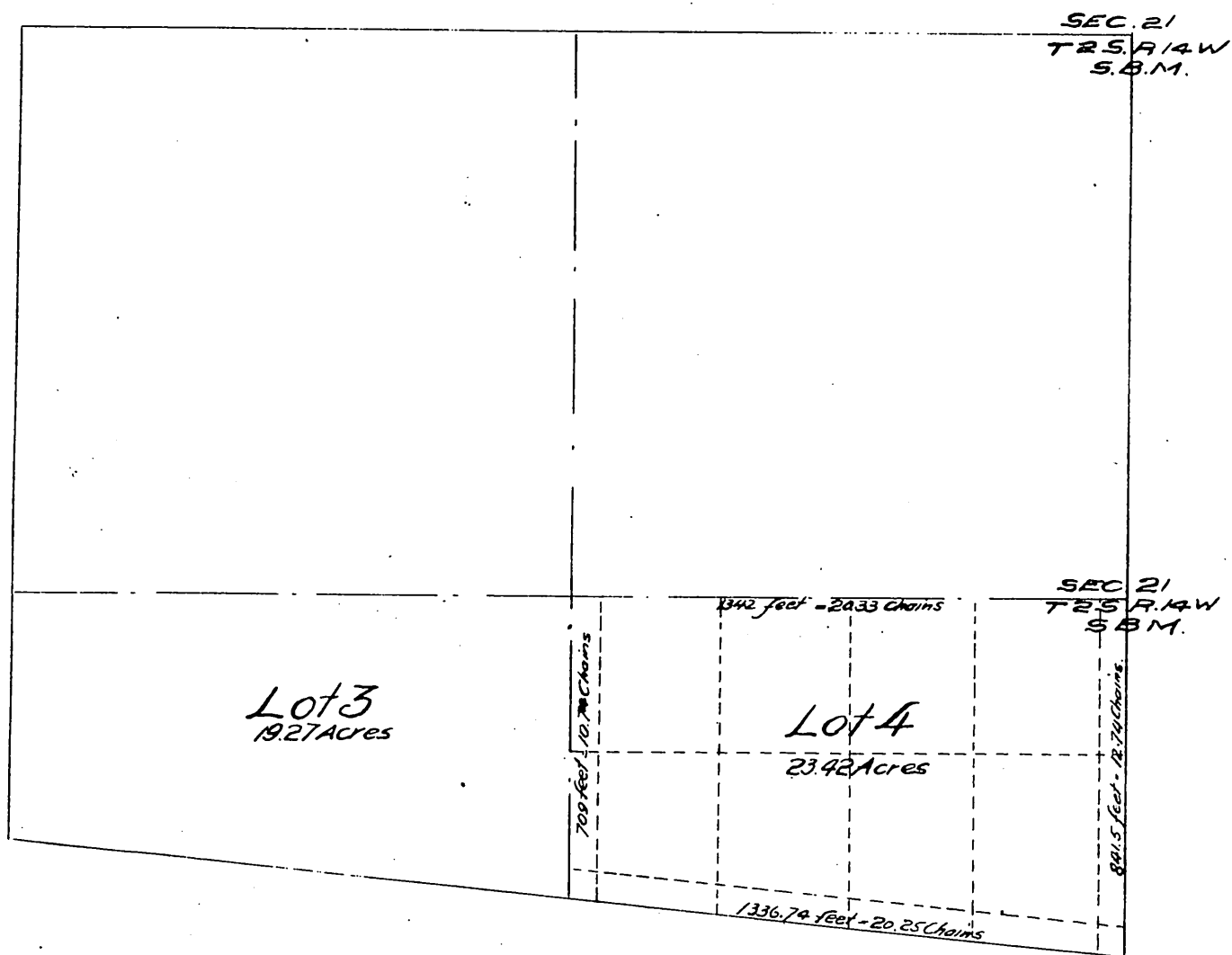


# The Grimeaud Tract

being Lot 4 of Section 21 of Township 2 South; Range 14 West S.B.M., was, September 1888 subdivided in Building Lots and Streets and a Plat of said Subdivision recorded at the request of G. Grimeaud Oct 1 1888 in the County Recorder's Office of Los Angeles County, California, in Book 34 Page 74 of Miscellaneous Records. In the session of the Board of Supervisors of March 21 1895, the said subdivision was vacated and abandoned and the land re-stored to acreage.

70



Minute Book 20 page -

March 21<sup>st</sup> 1895

In re Vacation of Streets and Reversion to acreage of lots in Grimeaud Tract } This being the time regularly set by order of continuance of this Board for hearing herein, Germain Grimeaud appears and is sworn and examined and no protest having been filed, upon motion of Supervisor May, duly seconded and carried, it is ordered that Evergreen Avenue, Alice Avenue, France Street, Pine Street, Figueroa Street and Mission Street all in Grimeaud Tract, a subdivision of Lot 4, Section 21, Township 2 South, Range 14 West S.B.M. be and the same are hereby vacated and abandoned and the lots and blocks in said Tract are hereby restored to acreage upon the filing in the office of the County Recorder of a map showing all property as effected by this order.

A full, true and correct copy of the original  
 Scale reduced to 6 Chains to 1 inch.  
 Recorded Apr. 18 1896 at 52 Min. past 9 A.M.  
 at request of G. Grimeaud  
 E.C. Hodgman, County Recorder.

By E.T. Wright.  
 Co. Sur and ex officio Dep. Co. Rec.