

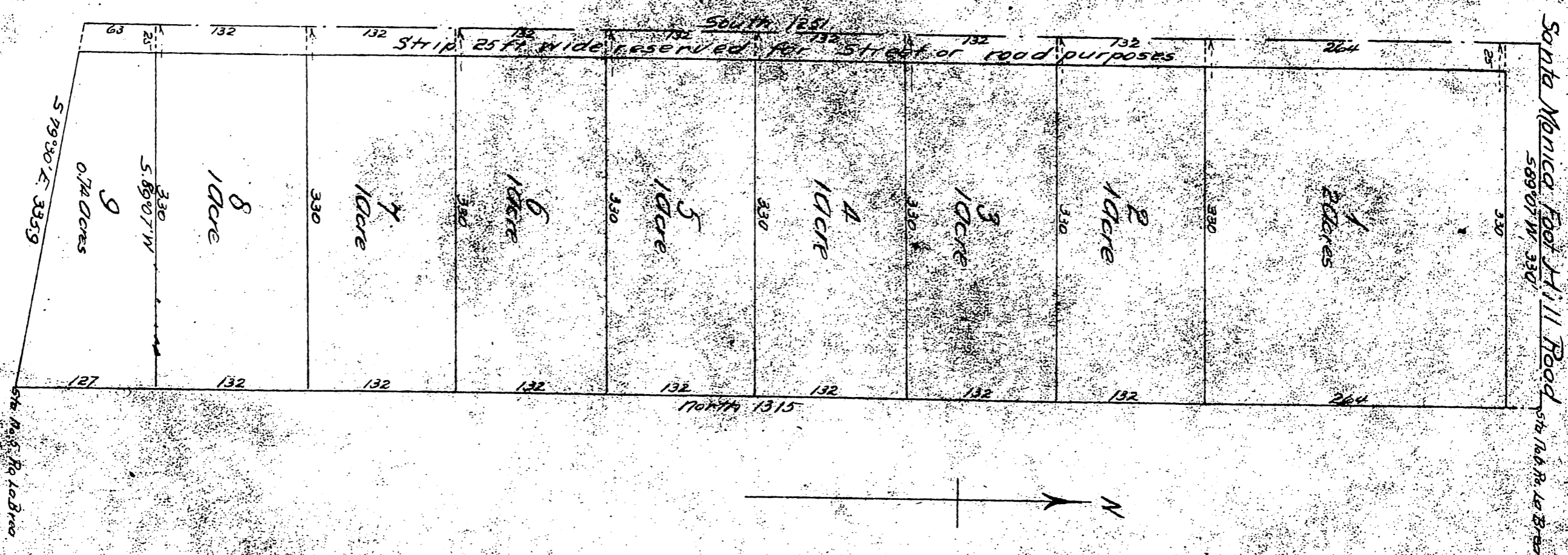
Map of the Pico Cahuenga Valley Tract

A Subdivision of the East part of lot 3, in Sec 18 T 1 S R 14 W S B M.

Los Angeles Co. Cal.

Surveyed by Pillsbury and Skinner, April 1896

Scale 60ft. = 1 in



Owner: *Walter H. Lyon*

A full true and correct copy of the original
(Scale reduced to 100 feet to 1 inch)
Recorded Apr. 29, 1896 at 59 Min Past 10 A.M.
at request of W. H. Lyon
E. C. Hodgman County Recorder

By *E. T. Haight*
Co. Sur. and ex officio Dep. Co. Rec.