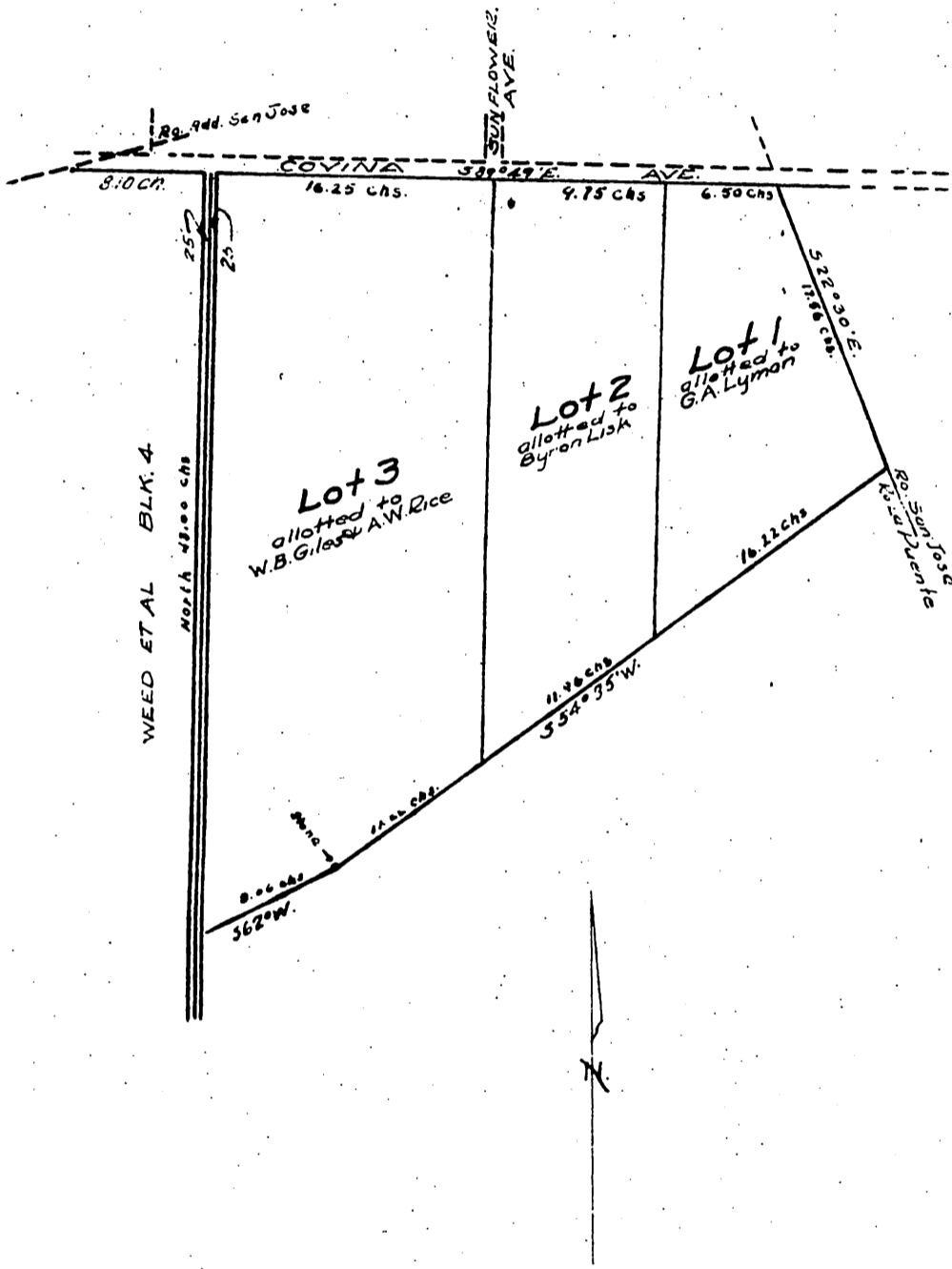


**Map of**  
**Voluntary Partition of Blk. 5**  
**Hollenbeck Ranch in Rancho La Puente**  
 Los Angeles County Cal.

*Being a subdivision of that parcel and allotment of land designated Block 5, Lyman et al, Tract 122 1/2 acres, as shown on the map entitled Partition of the Hollenbeck Ranch, situated in the E part Rancho La Puente, L.A. Co. Cal. filed in office of the County Recorder July, 10, 1885.*



*Note :- For further notes and descriptions, refer to the maps of Surveys in Sec. 8, Ro. Adm. to San Jos. of the partitions of Hollenbeck Ranch; and of this sub. and allotment of said Block 5, and filed in Books of Licensed Surveyors Plats.*

*Recorded June 9, 1896 at request of W.S. Wright.*

*Owners: G.P. Lyman  
 Byron Lisk  
 S.W. Rice  
 W.B. Giles.*