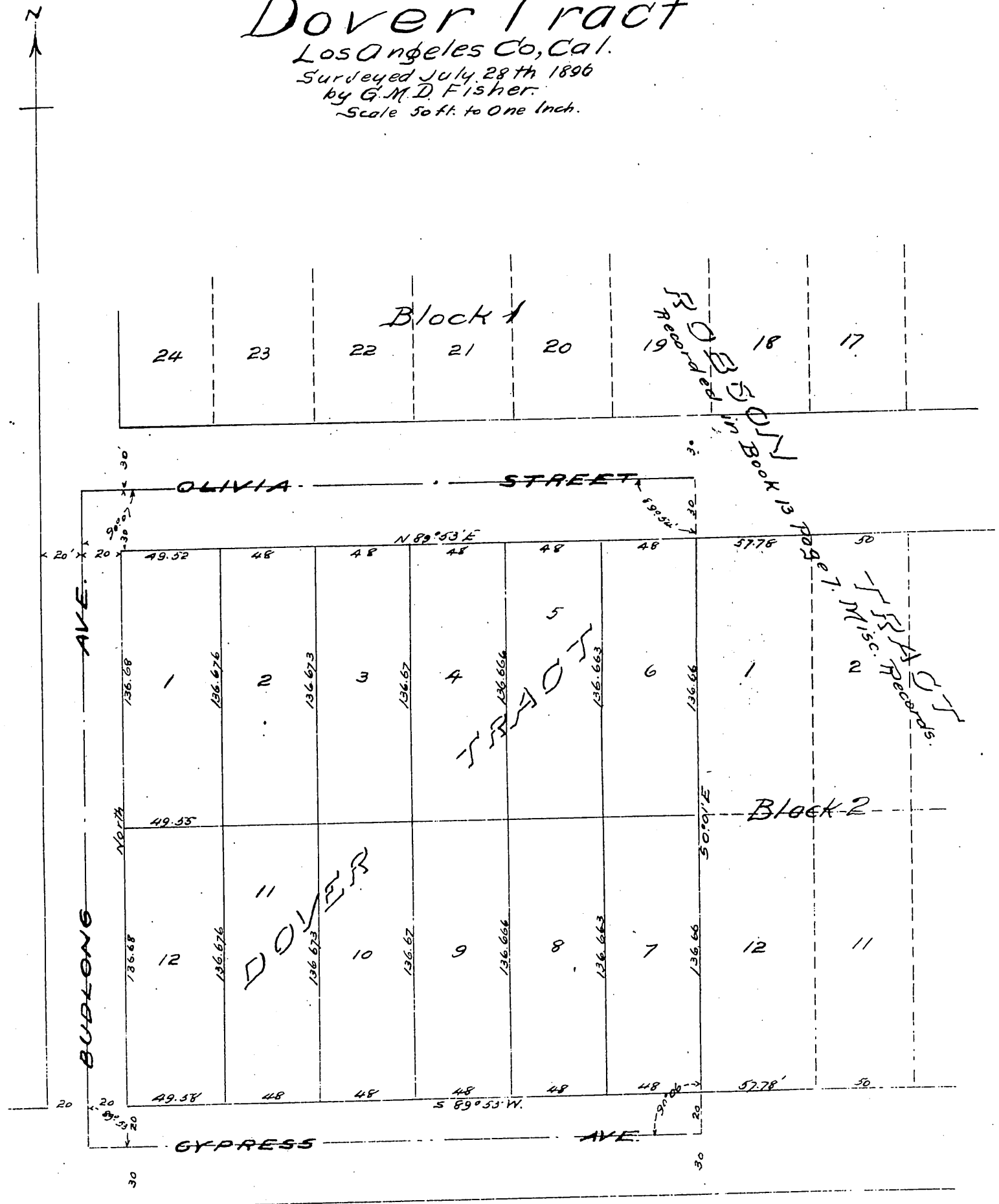


MAP  
of the  
**Dover Tract**  
Los Angeles Co, Cal.  
Surveyed July 28th 1896  
by G.M.D. Fisher  
Scale 50 ft. to One Inch.



Owner: *W.F. Grawisch*

A full, true and correct copy of the original  
(Scale reduced to 50 feet to One Inch)  
Recorded Sep 1, 1896 at 54 min. past 10 A.M.  
at request of W.F. Grawisch,  
County Recorder.

By *E.T. Wright*  
Co. Sur. and officio Dep. Co. Rec.