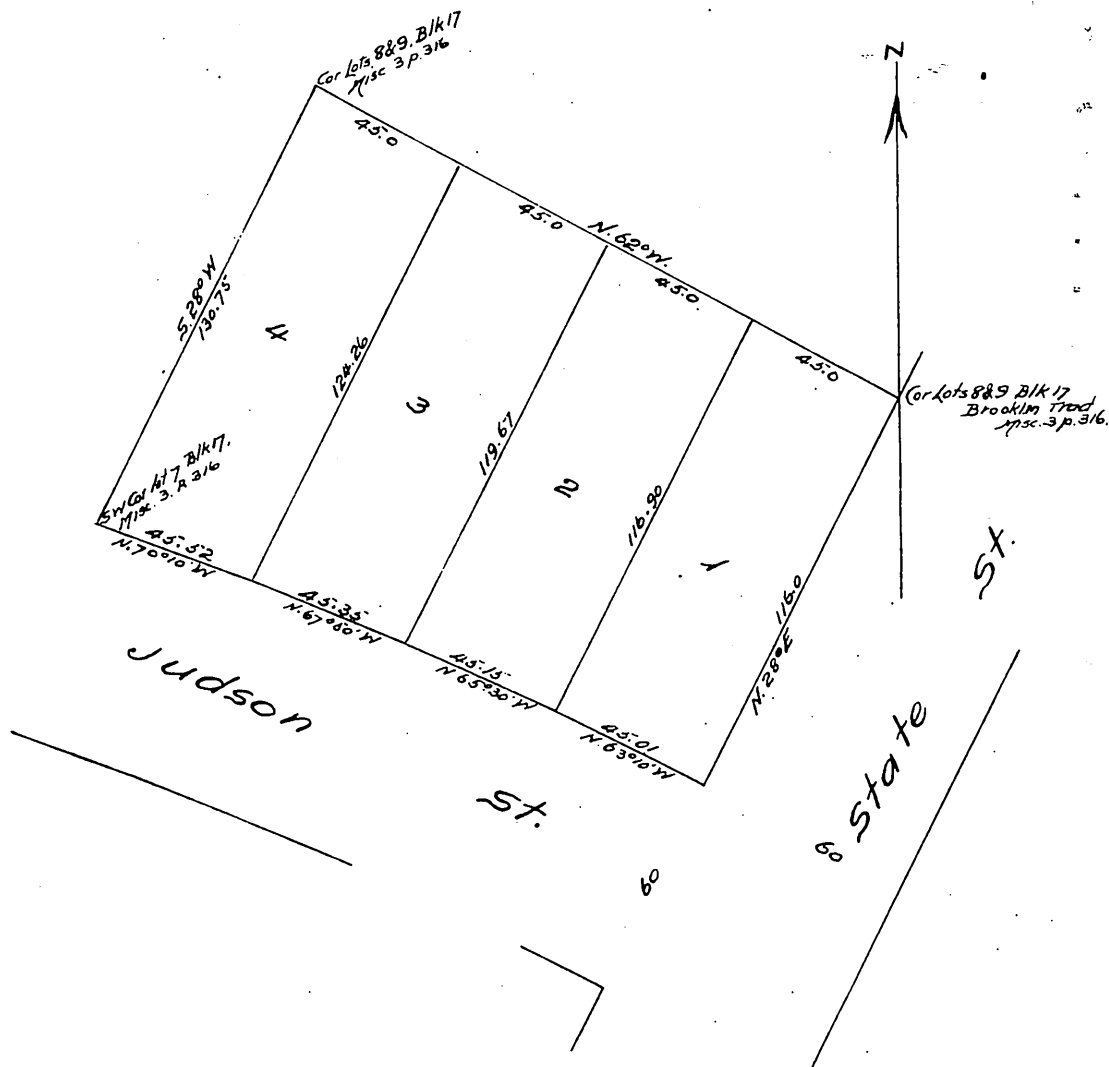


MAP OF
 C.A. RUNELS'S SUBDIVISION
 OF LOTS 7 & 8 IN BLOCK 17, BROOKLYN TRACT
 Los Angeles City, Cal.
 Scale 20'-1"
 H. J. Stocker, Surveyor
 Aug. 1896.



Owner: Minnie S. Runels

A full, true and correct copy of the original
 (Scale reduced to 50 feet to One inch.)
 Recorded Sep. 8, 1896, at 16 Min. Past 9. A. M.
 at request of Mary Runels.

E. C. Hodgman County Recorder.
 By E. T. Wright
 Co. Sur. and ex officio Dep. Co. Rec.