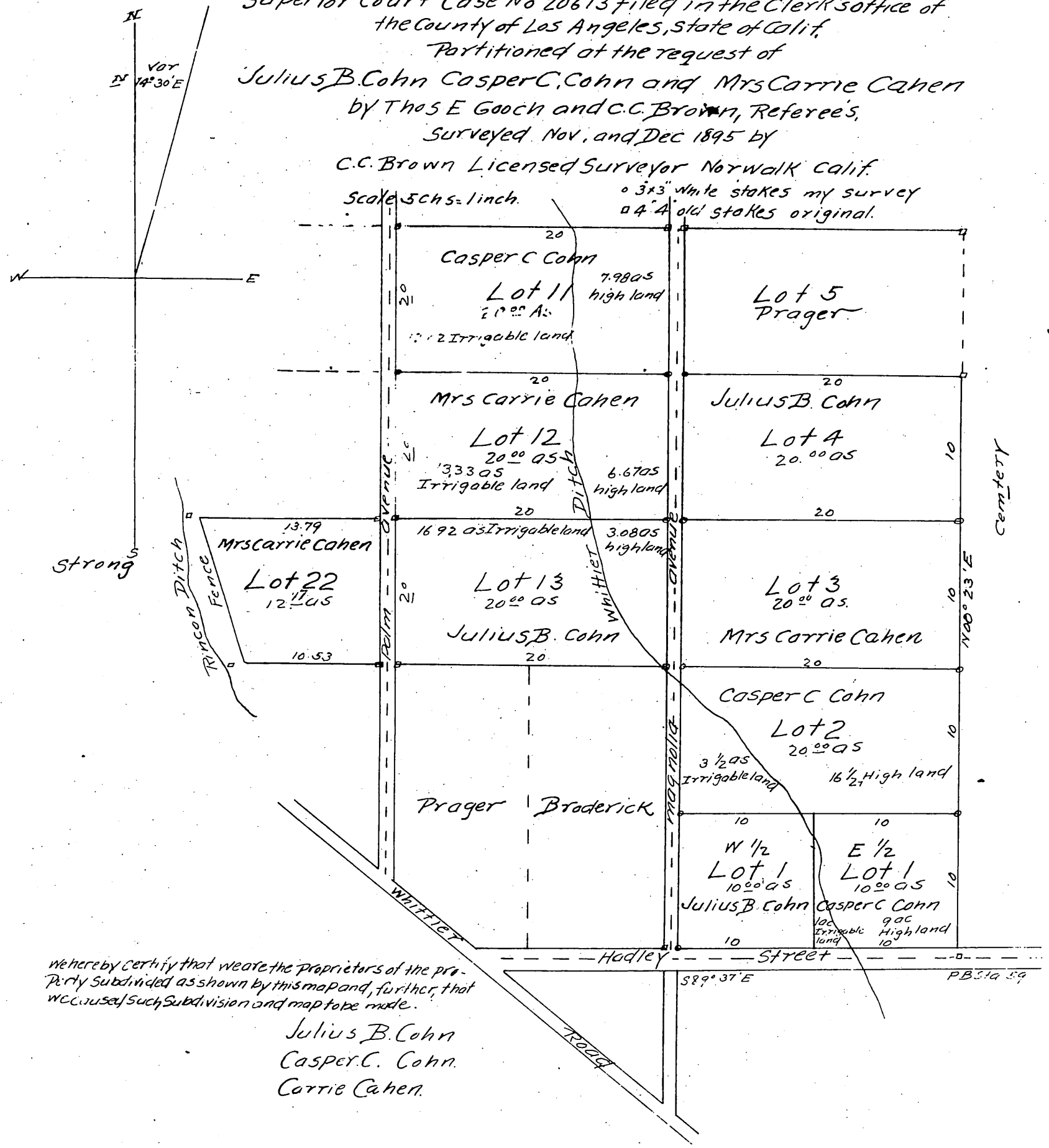


# Map of Cohns Partition of Lots 1, 2, 3, 4, 11, 12, 13 and 22 of the West Whittier Tract

Being the land shown on a map made by a decree of the  
Superior Court Case No 20613 filed in the Clerk's office of  
the County of Los Angeles, State of Calif.  
Partitioned at the request of  
**Julius B. Cohn Casper C. Cohn and Mrs Carrie Cohn**  
by **Thos E Gooch and C.C. Brown**, Referees,  
Surveyed Nov. and Dec 1895 by  
**C.C. Brown Licensed Surveyor Norwalk Calif.**

Scale 5 chs = 1 inch.  
3x3 White stakes my survey  
4x4 old stakes original.



We hereby certify that we are the proprietors of the property subdivided as shown by this map and, further, that we caused such subdivision and map to be made.

Julius B. Cohn  
Casper C. Cohn.  
Carrie Cohn.

A full, true and correct copy of the original.  
(Scale reduced to 80 chains to 1 inch.  
Recorded Dec 26 1895, at 56 min past 4 P.M.  
at request of J.B. Cohn  
E.C. Hodgman, County Recorder.  
By E.T. Wright, Deputy