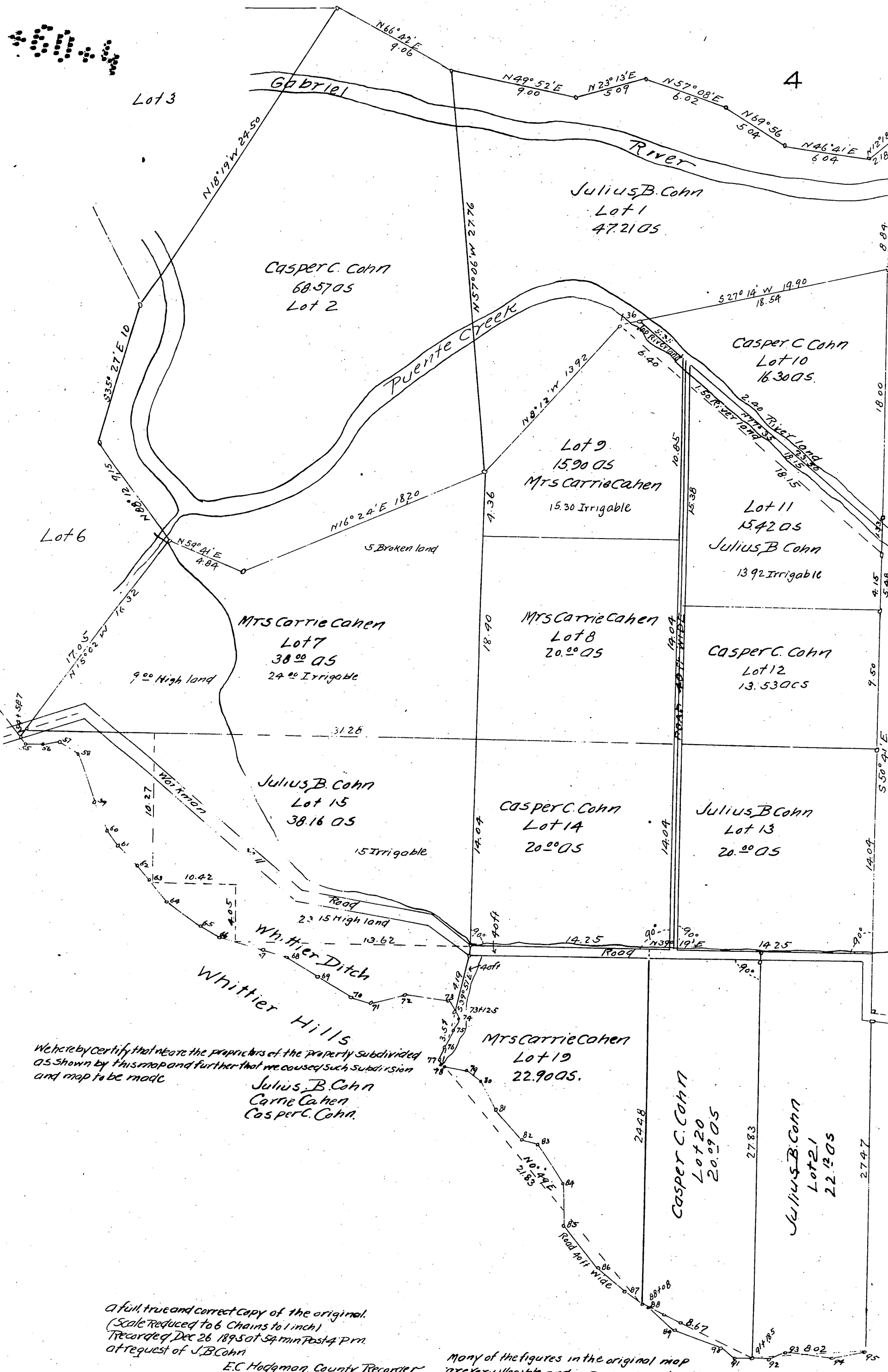


4



We hereby certify that we are the proprietors of the property subdivided as shown by this map and further that we caused such subdivision and map to be made

Julius B. Cohn
 Carrie Cohn
 Casper C. Cohn.

A full, true and correct copy of the original.
 (Scale Reduced to 6 Chains to 1 inch)
 Recorded Dec 26 1895 at 54 min Past 4 P.M.
 at request of J.B. Cohn

E.C. Hodgman, County Recorder
 B.E. Wright, Deputy

Many of the figures in the original map are very illegible, and in some cases clearly wrong. Where known to be wrong they are underscored, and where illegible I have taken what appeared to be nearest right
 Recorder.