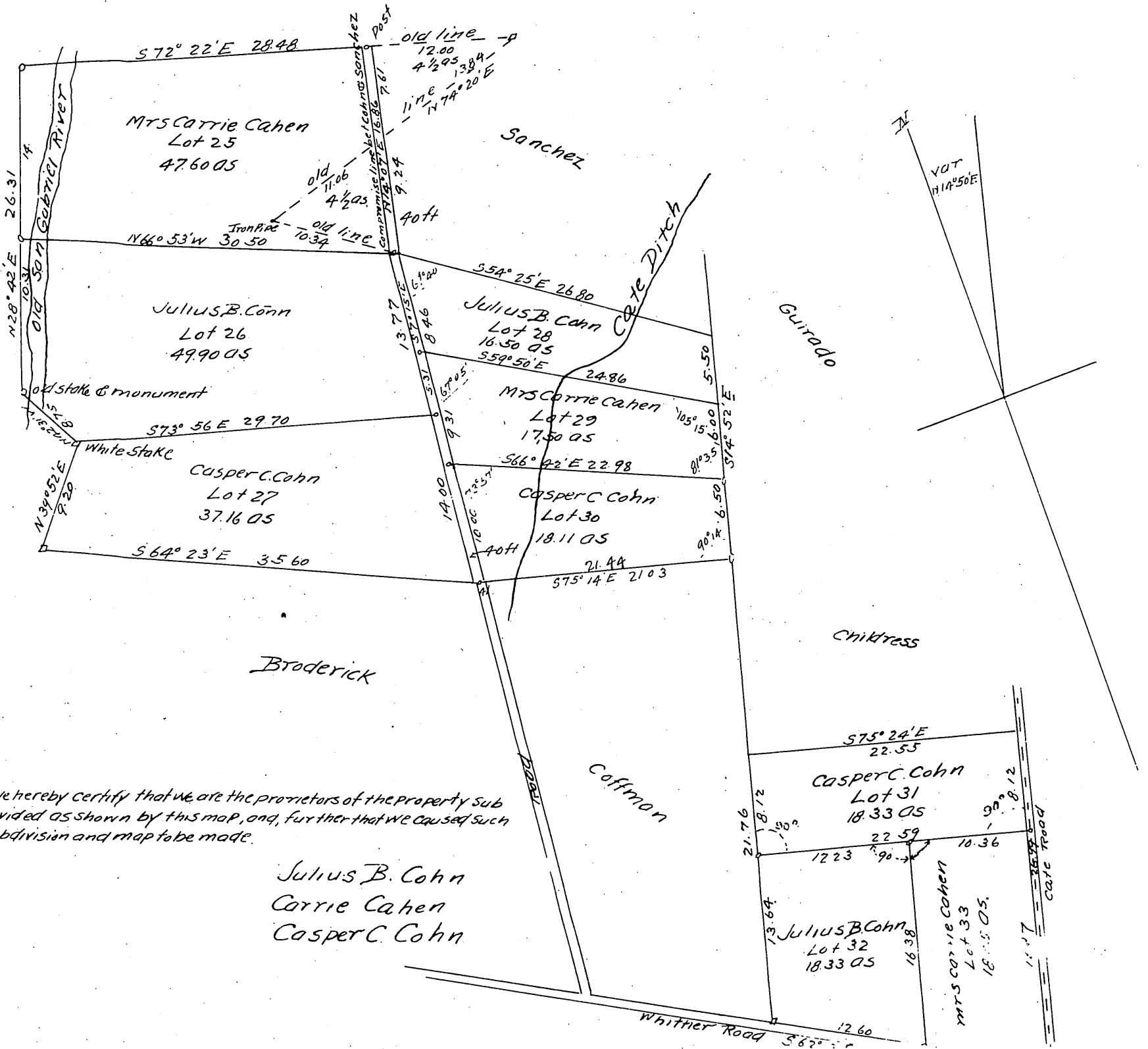




Map of Cohn's Partition of Lots 25, 28 and 30

of the lands shown on map made by a decree of the Superior Court, Case No 20613, filed in the Clerk's office of the County of Los Angeles, State of Calif. Partitioned by request of Julius B. Cohn, Casper C. Cohn and Mrs Carrie Cohn, by Thos L. Gooch and C.C. Brown, Referees, Surveyed Nov and Dec 1895, by C.C. Brown, Licensed Surveyor. Norwalk, Calif. Scale 5 chs = 1 inch or 3x3 white stakes my survey or 4x4 old stakes, original.



We hereby certify that we are the proprietors of the property subdivided as shown by this map, and, further that we caused such subdivision and map to be made.

Julius B. Cohn
Carrie Cohn
Casper C. Cohn

A full, true and correct copy of the original
(Scale reduced to 10 chains to 1 inch)
Recorded Dec. 26, 1895 at 57 Min past 4 P.M.
at request of J. B. Cohn.

E.C. Hodgman, County Recorder.
By C. J. Wright Deputy, County Recorder.

Those figures in the original map which are known to be wrong have been underscored, but on account of the illegibility of many of the figures in the original no dependence can be placed in this map.

Recorder.