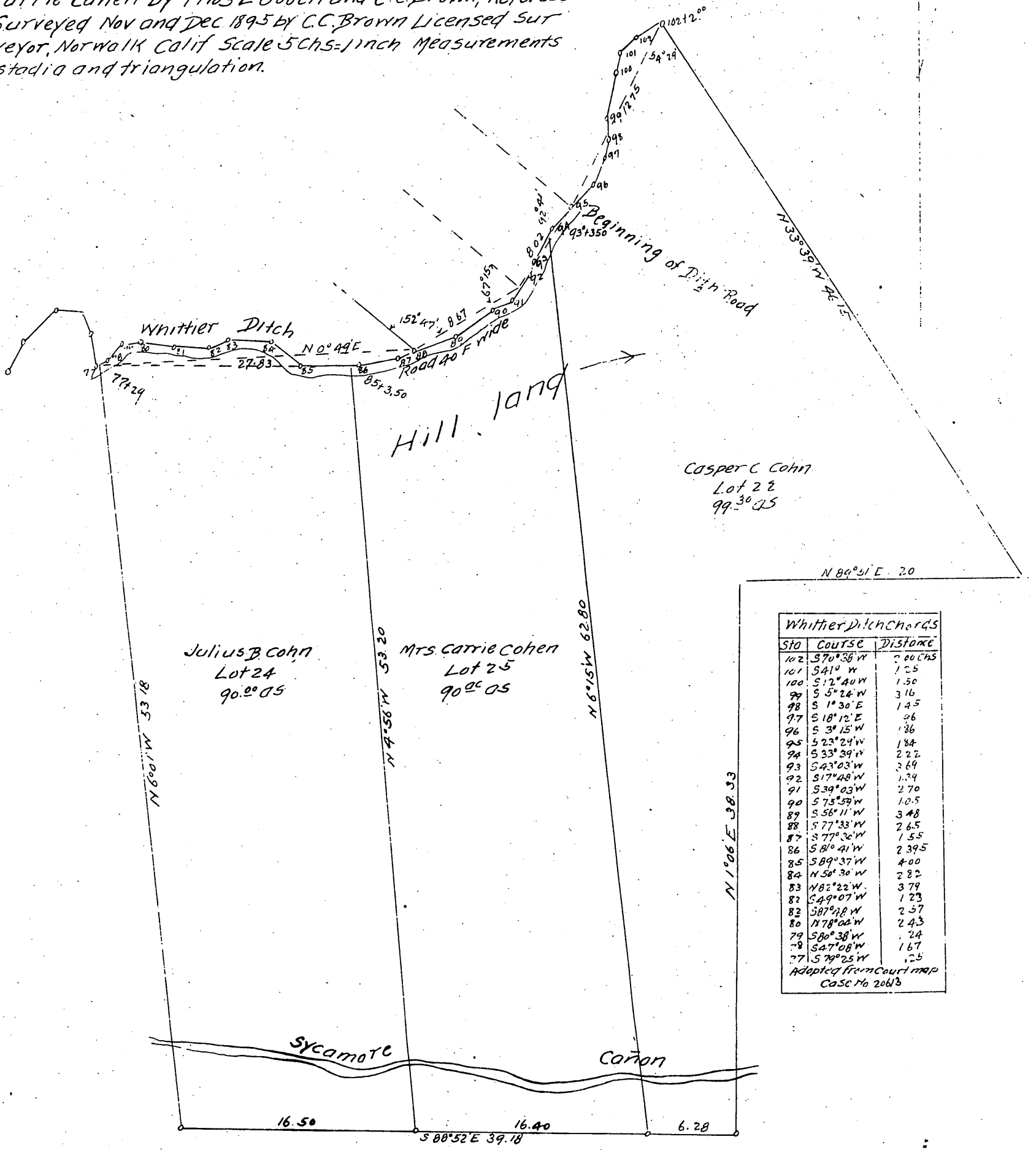


45045

# Map of Cohn's Partition of Lot 31

of the land shown on a map made by a decree of the Superior Court Case No 20613, Filed in the Clerks office of the County of Los Angeles, State of Calif, Partitioned at the request of Julius B. Cohn Casper C. Cohn and Mrs Carrie Cohen by Thos L Gooch and C. C. Brown, Referees Surveyed Nov and Dec 1895 by C. C. Brown Licensed Surveyor, Norwalk Calif Scale 5 Chs = 1 inch Measurements stadia and triangulation.



Julius B. Cohn  
Proprietors }  
Carrie Cohen  
Casper C. Cohn.

These figures in the original map which are known to be wrong have been underscored but, on account of the illegibility of many of the figures in the original, no dependence can be placed in this map

A full, true and correct copy of the original (Scale reduced to 8 Chains to one inch) Recorded Dec 26 1895 at 55 m. n. pa. 4 P.M. at request of J. B. Cohn.

EC Hodgman County Recorder.  
By J. N. Fryer Deputy.

Recorder