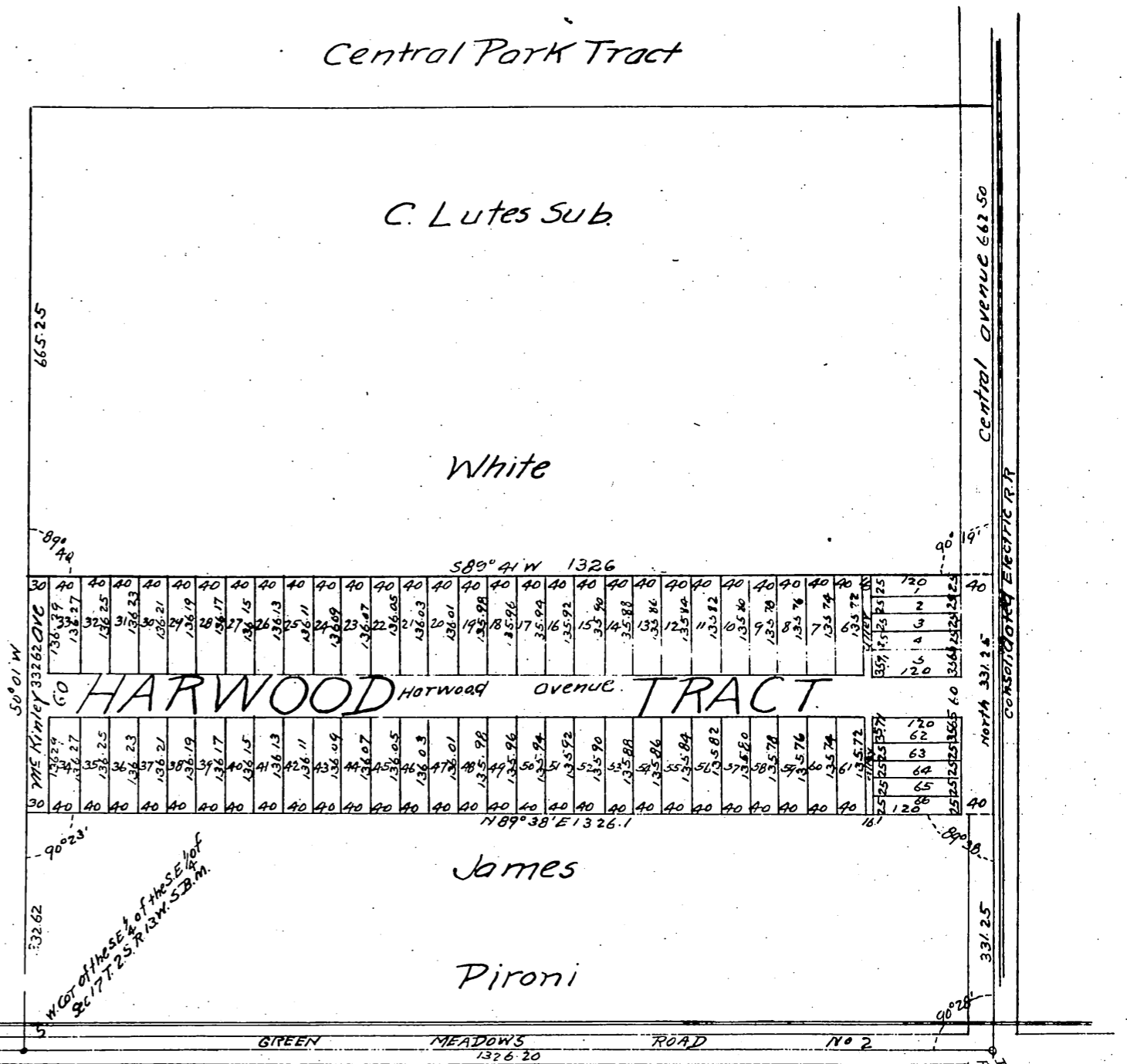


Map of the
Harwood Tract
 being the N. 1/2 of the S. 1/2 of the SE. 1/4 of
 the SE. 1/4 of Section 17 T. 2. S. R. 13. W. S. B. M.
 Los Angeles County, Cal.
 Surveyed in Dec 1895 by
 G. M. D. Fisher
 Scale 80 feet to one inch

Proprietors } Martha J. Harwood.
 J. H. Harwood.



1/4 Section between Secs 17 & 20 T. 2. S. R. 13. W. S. B. M.
 Post & Stone

A full, true and correct copy of the original
 (Scale reduced to 200 feet to 1 inch)
 Recorded Jan 4 1896 at 12 M.
 at request of M. J. Harwood

E. C. Hodgman County Recorder.
 By C. J. Wright ex Deputy County Recorder.



1/4 Section between Secs 17 & 20 T. 2. S. R. 13. W. S. B. M.
 Post & Stone