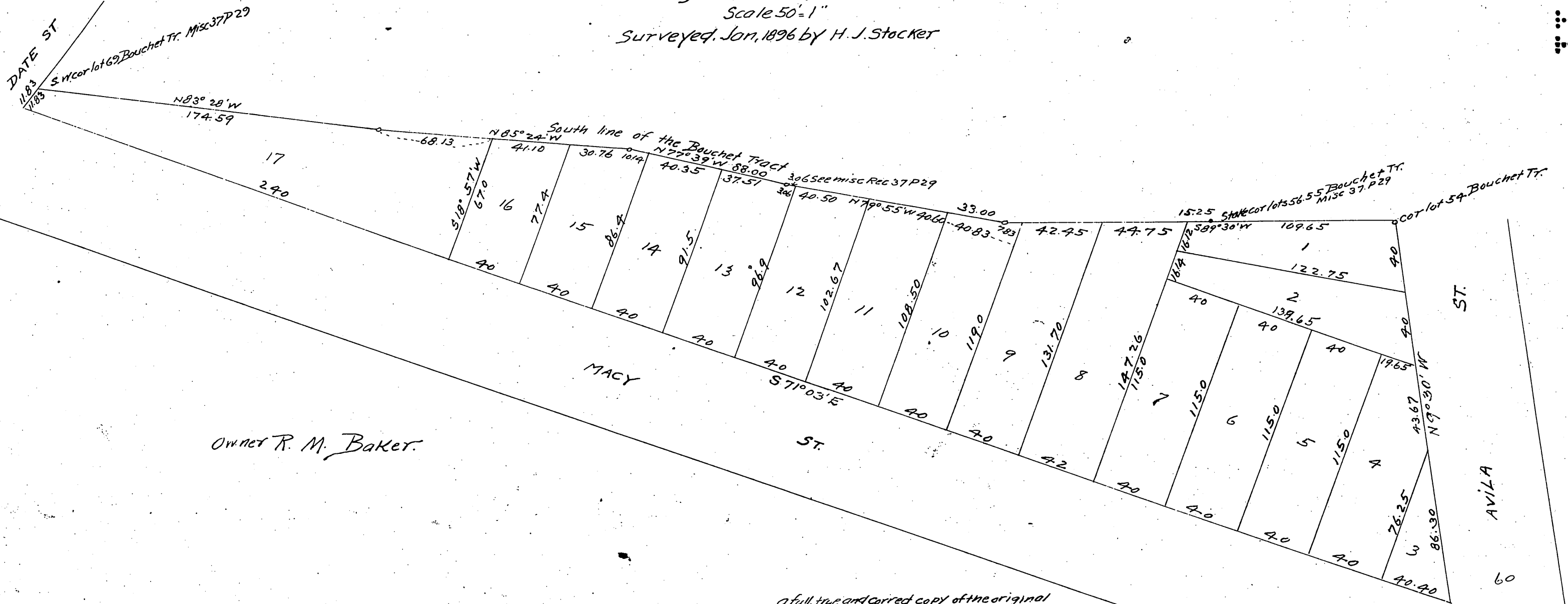


# R.M. Baker Tract.

Los Angeles City California.

Scale 50'-1"

Surveyed Jan. 1896 by H. J. Stacker



Owner R. M. Baker.

A full, true and correct copy of the original  
 Recorded Jan 21, 1896 at 4:5 min past 11 a.m.  
 at request of R.M. Baker

EC Hodgman County Recorder.  
 By E.T. Wright.

County Surveyor and ex officio Deputy County Recorder.

