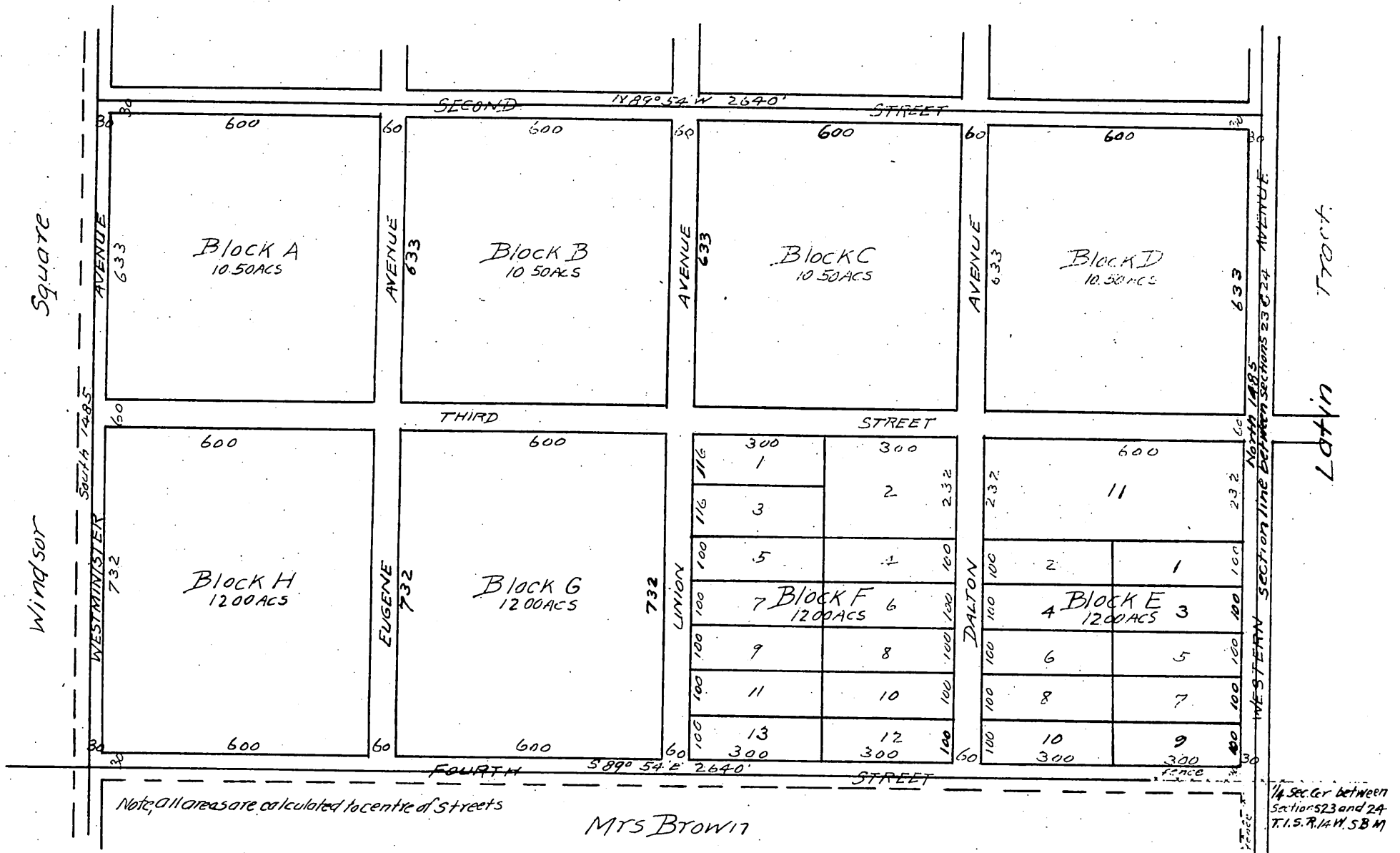


Map of Plummer Square Los Angeles Co, Cal

Being the south 90 acres of the
NE 1/4 of Section 23 T.15 R. 14 W. 5 B. M.
Scale 100 to one inch J.A. Bernol November 1945
SUT & C.E.



Proprietor John L. Plummer,

a full, true and correct copy of the original
(Scale reduced to 300 feet to one inch)
Recorded Jan 28, 1946, at 2:41 pm past 4 P.M.
at request of J. L. Plummer.

E.C. Hodgman, County Recorder.

By E.T. Wright

County Surveyor and ex-officio Deputy County Recorder.