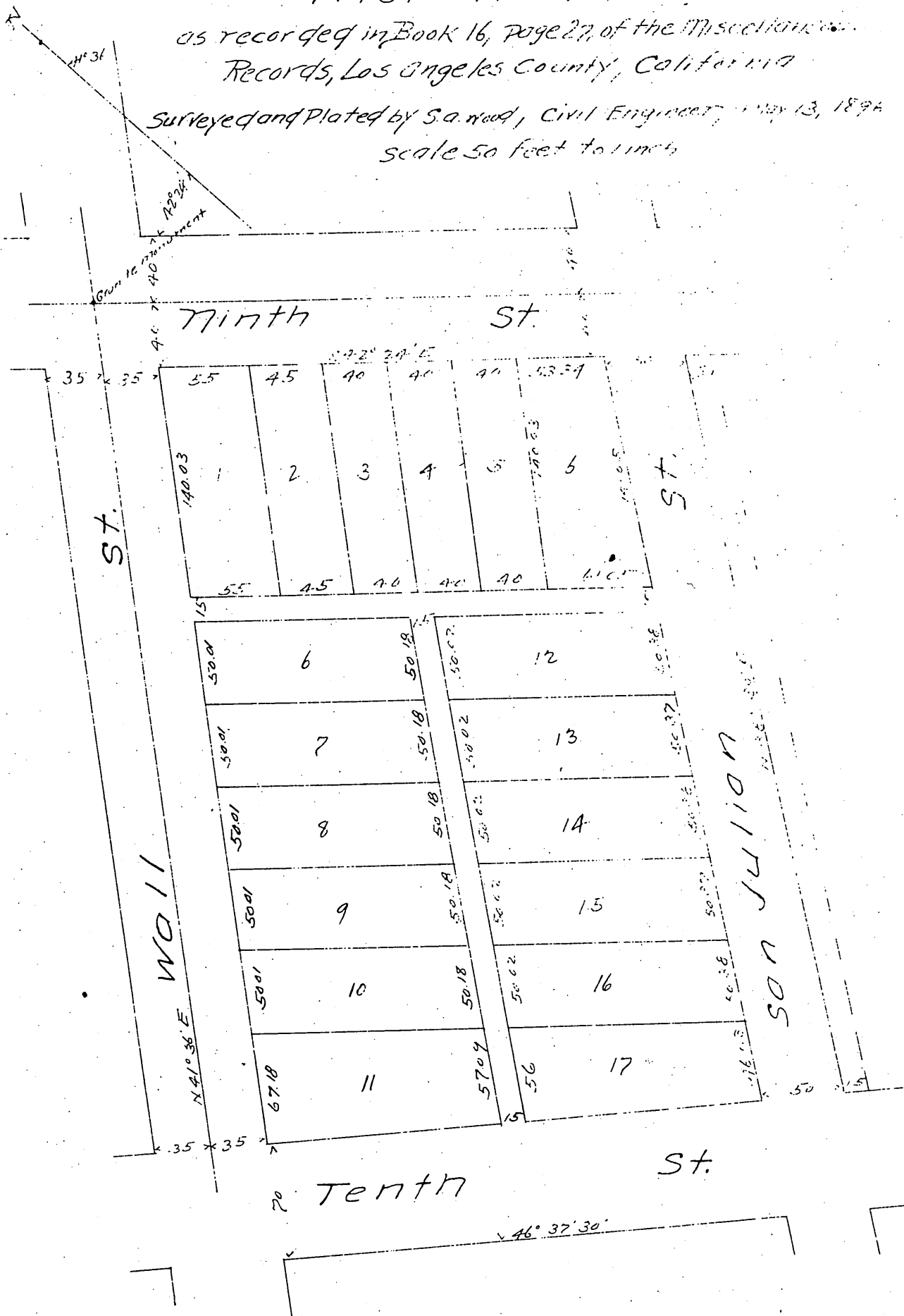


Montgomery

Re-subdivision of Lots 1, 2, 3, 4 and 5 of Block C of the Moran Tract

as recorded in Book 16, Page 27, of the Miscellaneous Records, Los Angeles County, California

Surveyed and Plated by S. A. Wood, Civil Engineer, May 13, 1894
Scale 50 feet to 1 inch



John Montgomery

A full, true and correct copy of the original
 (Scale reduced to 50 feet to one inch)
 Recorded May 14, 1896, at 35 min past 12 m
 at request of John Montgomery.
 E. C. Hodgman, County Recorder.
 By E. T. Wright, ex Deputy and Co Surveyor.