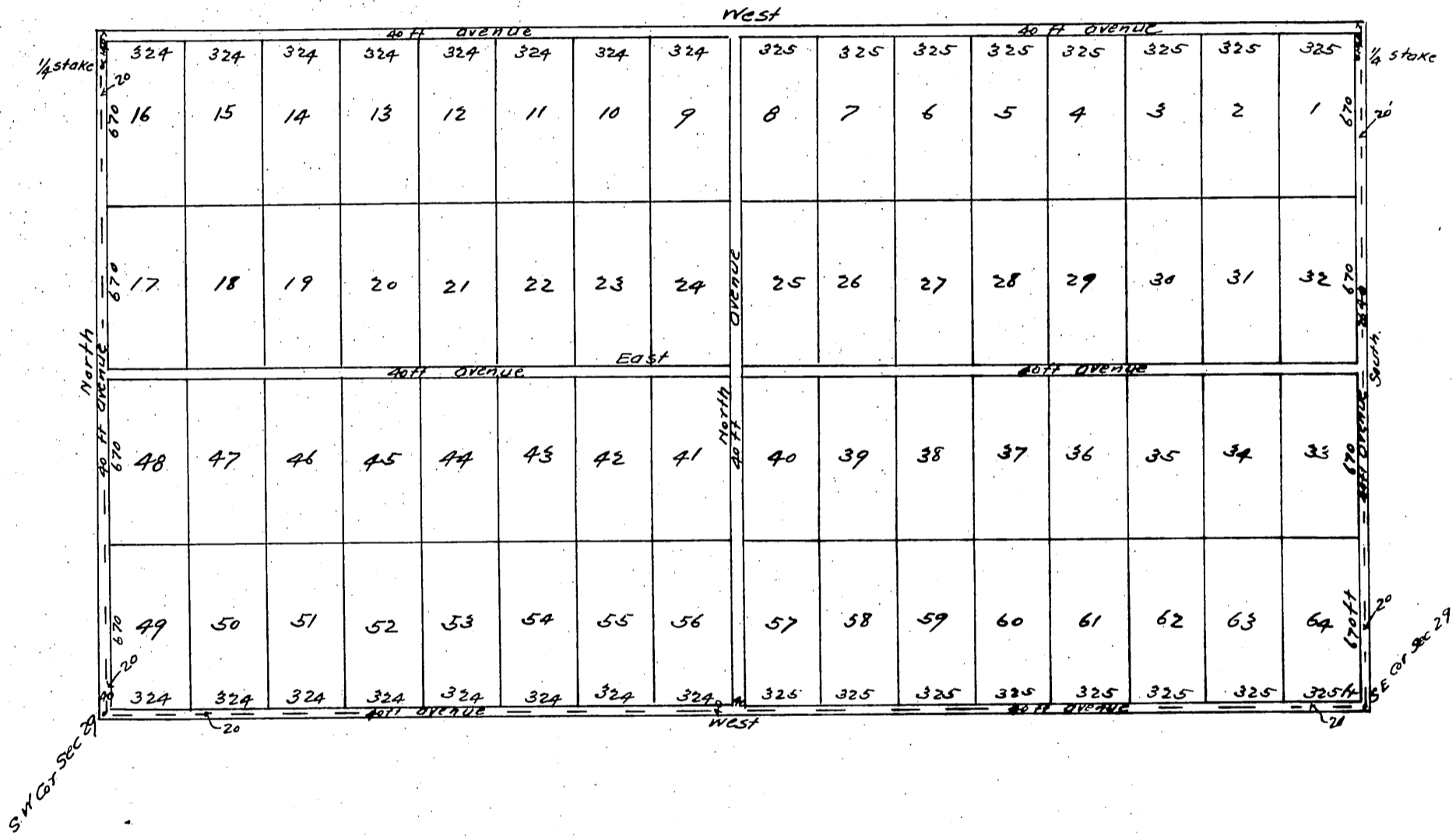




# Del Sur Ranch Co, Orchard Tract

Subdivision of the South 1/2 and the South 140 feet of the North 1/2 of Section 29 Township 7 North, Range 13 West, S.B.M. Scale 300 feet to the inch.



Owners: Del Sur Ranch Co

a full, true and correct copy of the original (Scale reduced to 600 ft. in inch) Recorded Aug 3, 1896 c. in Post 110 A.M. at request of Del Sur Ranch Co EC Hodgman, County Recorder By E.T. Wright Co Surveyor.