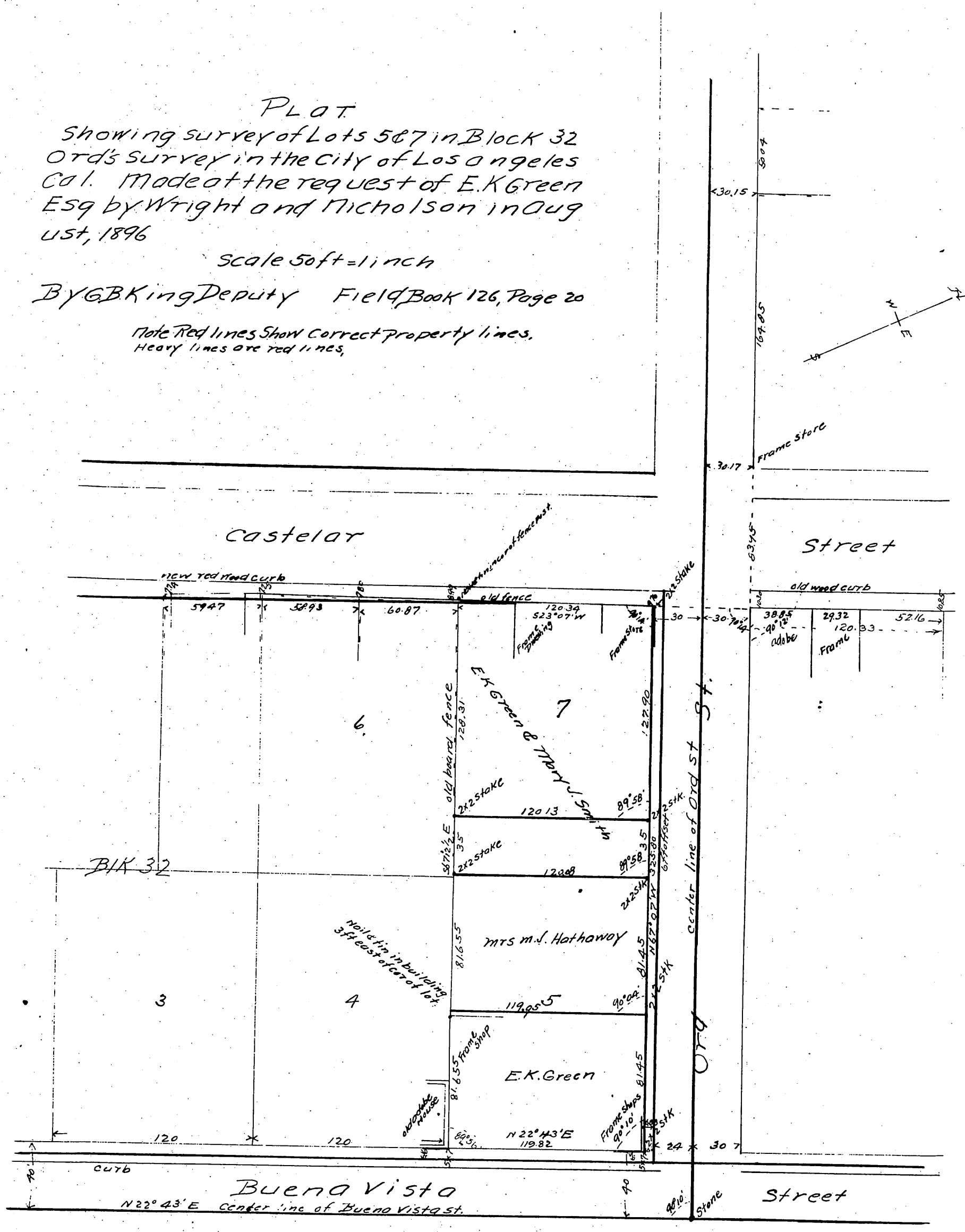


PLAT
 Showing survey of Lots 5 & 7 in Block 32
 Ord's Survey in the City of Los Angeles
 Cal. Made at the request of E. K. Green
 Esq by Wright and Nicholson in Aug
 ust, 1896

Scale 50ft = 1 inch

By G. B. King Deputy Field Book 126, Page 20

Note Red lines show correct property lines,
 Heavy lines are red lines.



E. K. Green
Laminated }
Survey with }
Mrs. J. Hathaway }
 (Owner of Lots 5 and 7
 and Block 32)

a full, true and correct copy of the original
 (Scale reduced to 50 feet to one inch)
 Recorded Aug 20, 1896 at 16 min Past 11 a.m.
 at request of E. K. Green.
 E. C. Hodgman County Recorder
 By E. T. Wright Co Surveyor.