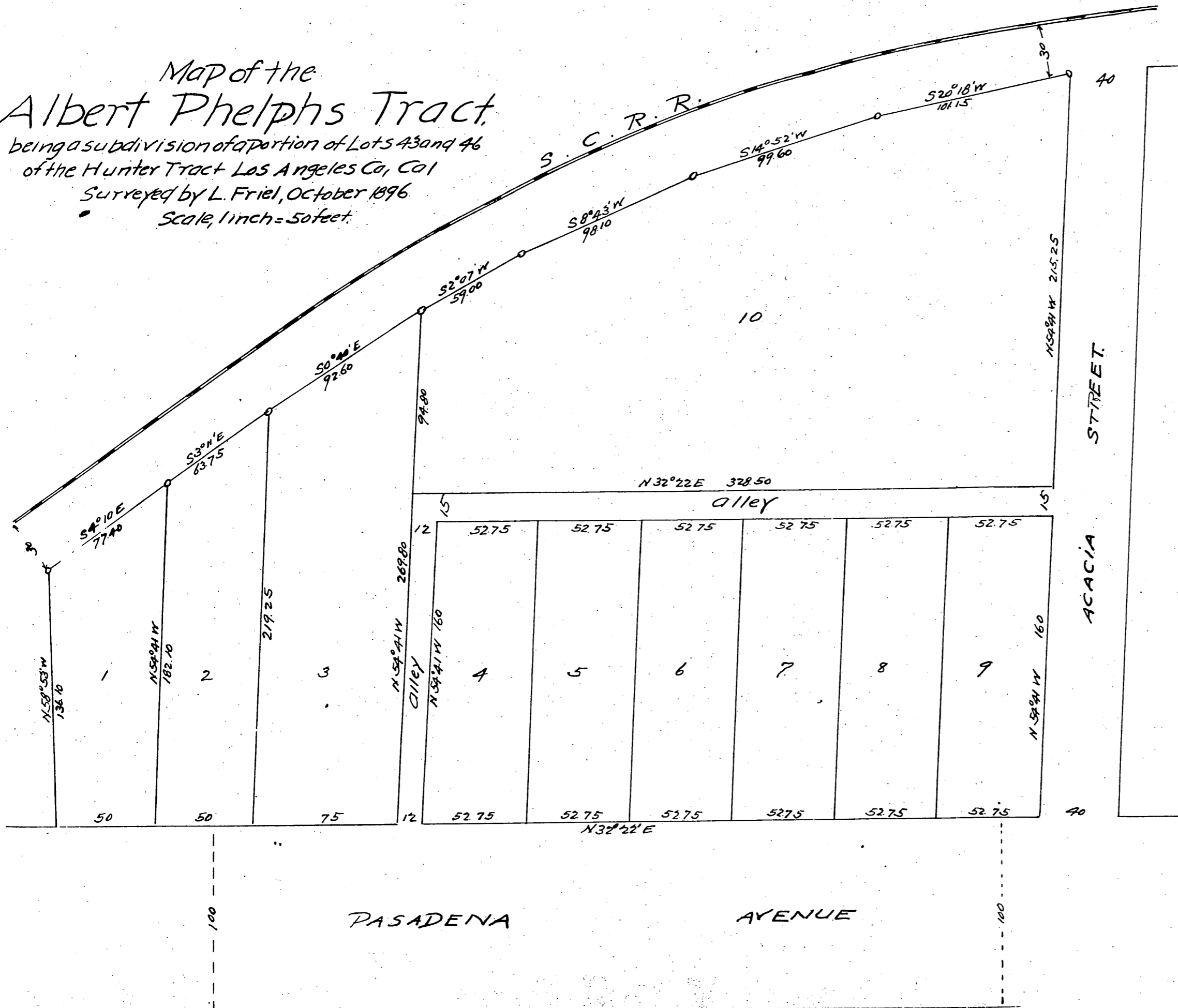


Map of the Albert Phelps Tract,

being a subdivision of a portion of Lots 43 and 46 of the Hunter Tract Los Angeles Co, Cal
 Surveyed by L. Friel, October 1896
 Scale, 1 inch = 50 feet.



Owner:
 Albert Phelps

A full, true and correct copy of the original
 Recorded Oct 9 1896, at 35 min past 10 a.m.
 at request of Albert Phelps
 E.C. Hodgman County Recorder.
 By E.T. Wright Co Surveyor.

52