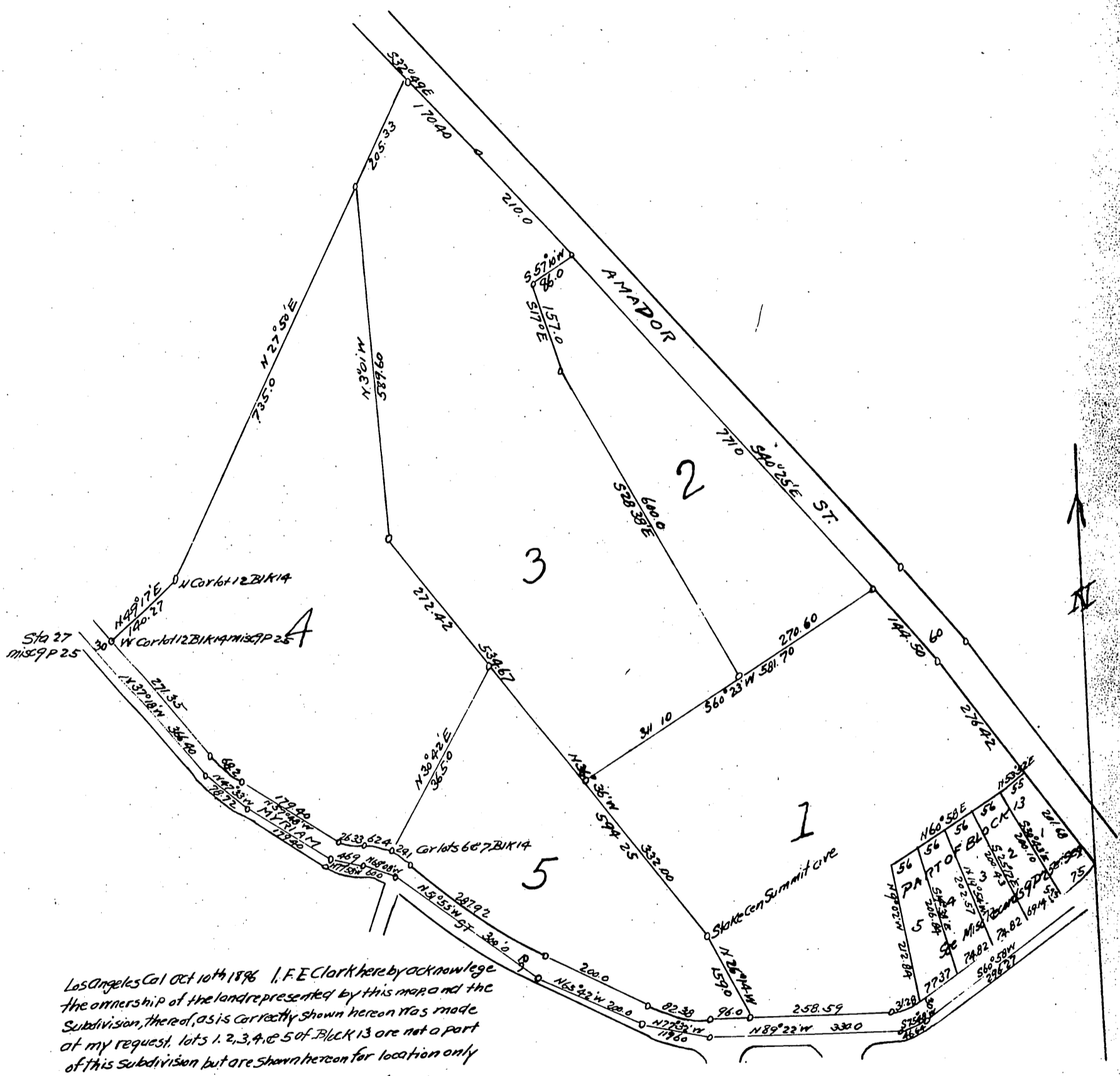


Map of F. E. Clark's Subdivision

of a part of the
Highland View Tract.
See Map Misc Records b. 9 p. 25 et seq.
Los Angeles County, Cal
Scale 200 ft = 1 inch
Surveyed Oct 1896
by H. J. Stocker.



Los Angeles Cal Oct 10th 1896 I, F. E. Clark hereby acknowledge
the ownership of the land represented by this map and the
subdivision thereof, as is correctly shown hereon was made
at my request. Lots 1, 2, 3, 4, & 5 of Block 13 are not a part
of this subdivision but are shown hereon for location only
F. E. Clark.

a full, true and correct copy of the original
Recorded Oct 15 1896 at 34 min past 11 a.m.
at request of F. E. Clark.
E. C. Hodgman County Recorder.
By E. T. Wright Co Surveyor.