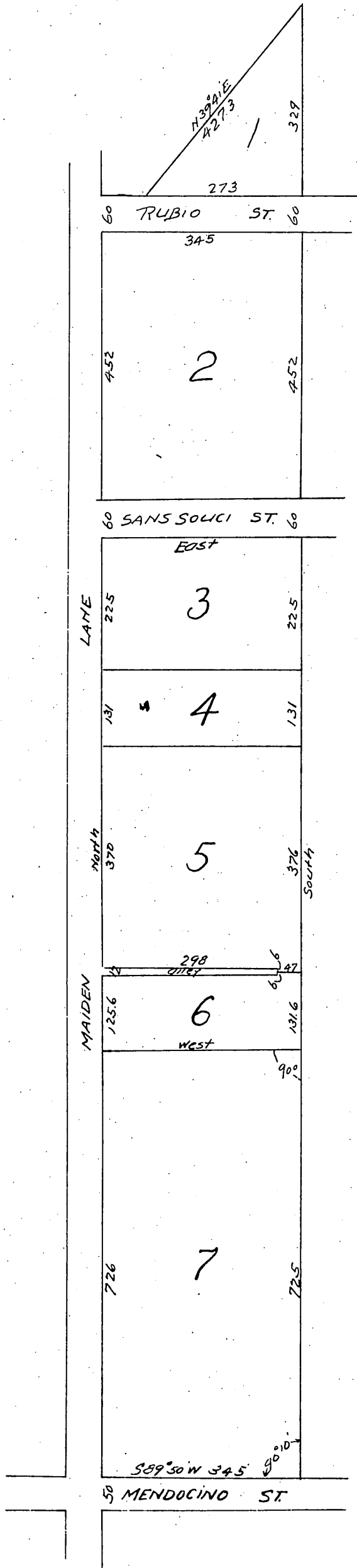


Replat of First Addition to Altadena Heights

First Addition to
as per map of said Altadena Heights recorded in Page 46, Book
36 Miscellaneous Records of Los Angeles County
Scale, 1 in = 200 ft



Covered by
D. Patten
D. Patten

A full, true and correct copy of the original
Recorded Nov 19, 1886 at 55 min Past 1 P.M.
at Request of G. D. Patten.

E.C. Hodgman County Recorder.
By E.T. Wright Deputy.