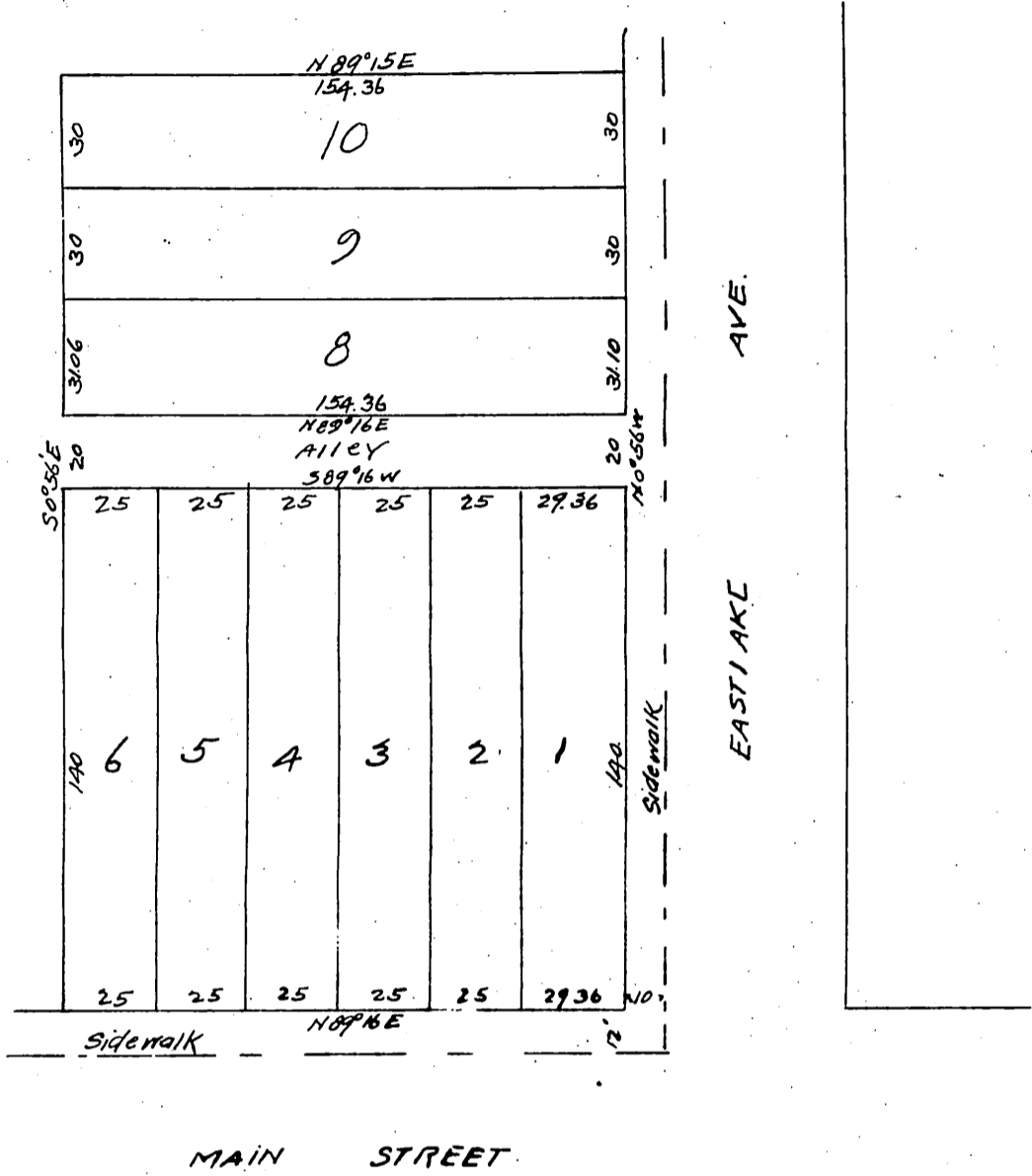


Plat  
 of Resubdivision of  
 Lot 4, Blk 35  
 Terminus Homestead Tract

subdivided at request of S. B. Weller.  
 by  
 Wright and Nicholson  
 Dec 1896 Scale 30 ft = 1 in.



*(Witness)*  
 S. B. Weller  
 Mary E. Liberty

Scale reduced to 50 feet to 1 inch  
 A full, true and correct copy of the original  
 Recorded Dec 1896 at 20 min past 3 P.M.  
 at request of S. B. Weller  
 E. C. Hodgman County Recorder  
 By E. T. Wright Co Surveyor,