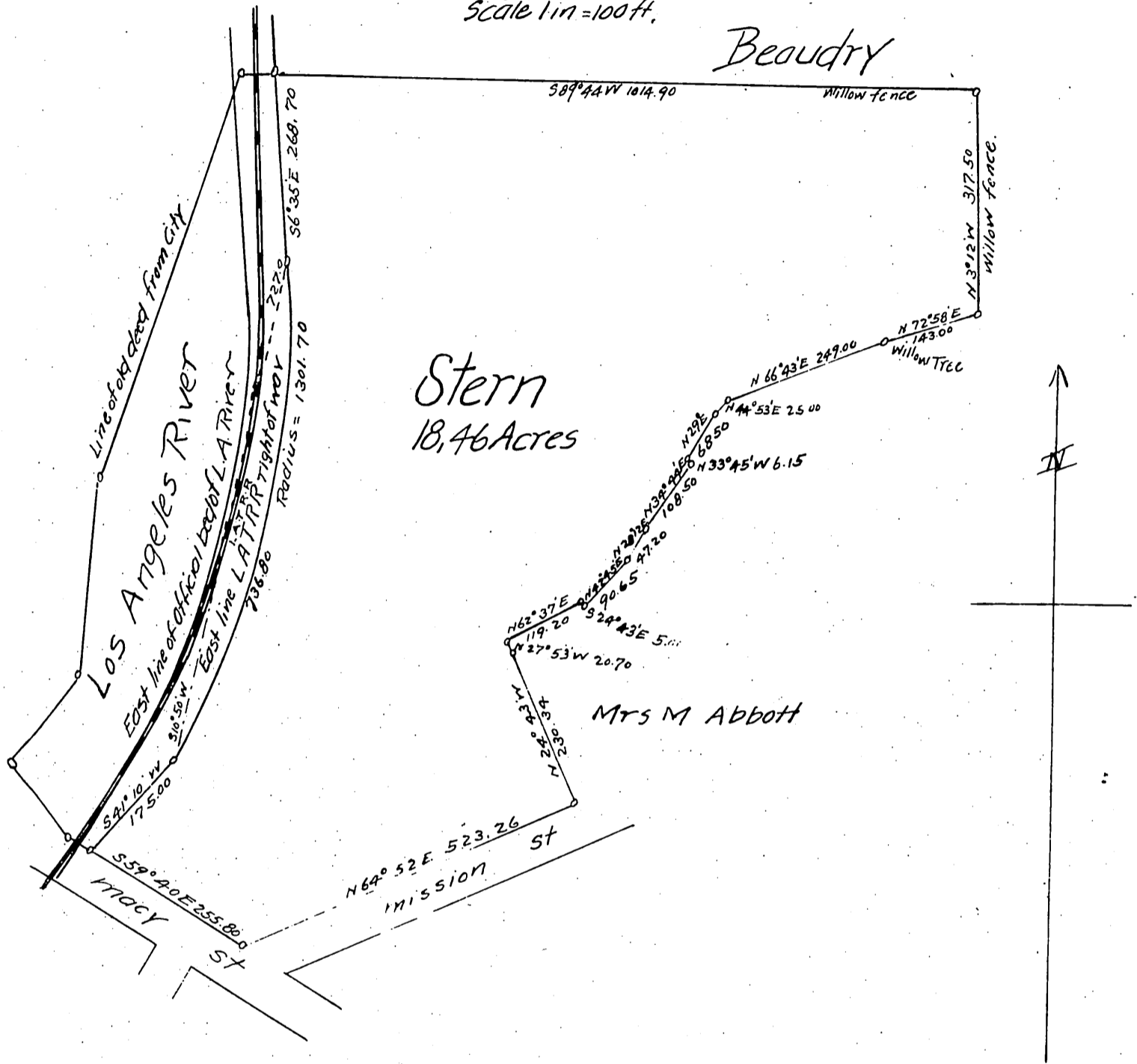


# Stern Tract Los Angeles City, Cal.

Compiled from surveys of  
Hanson and Solano and Wright and Nicholson  
Dec 1896  
Scale 1 in = 100 ft.



Owner: *John Stern*

A full, true and correct copy of the original  
(scaled down to 200 feet to 1 inch)  
Recorded Dec 19 1896 at 46 min past 11 am  
at request of J.O. Groves  
EC. Hodgman county Recorder  
By E.T. Wright Co Surveyor.