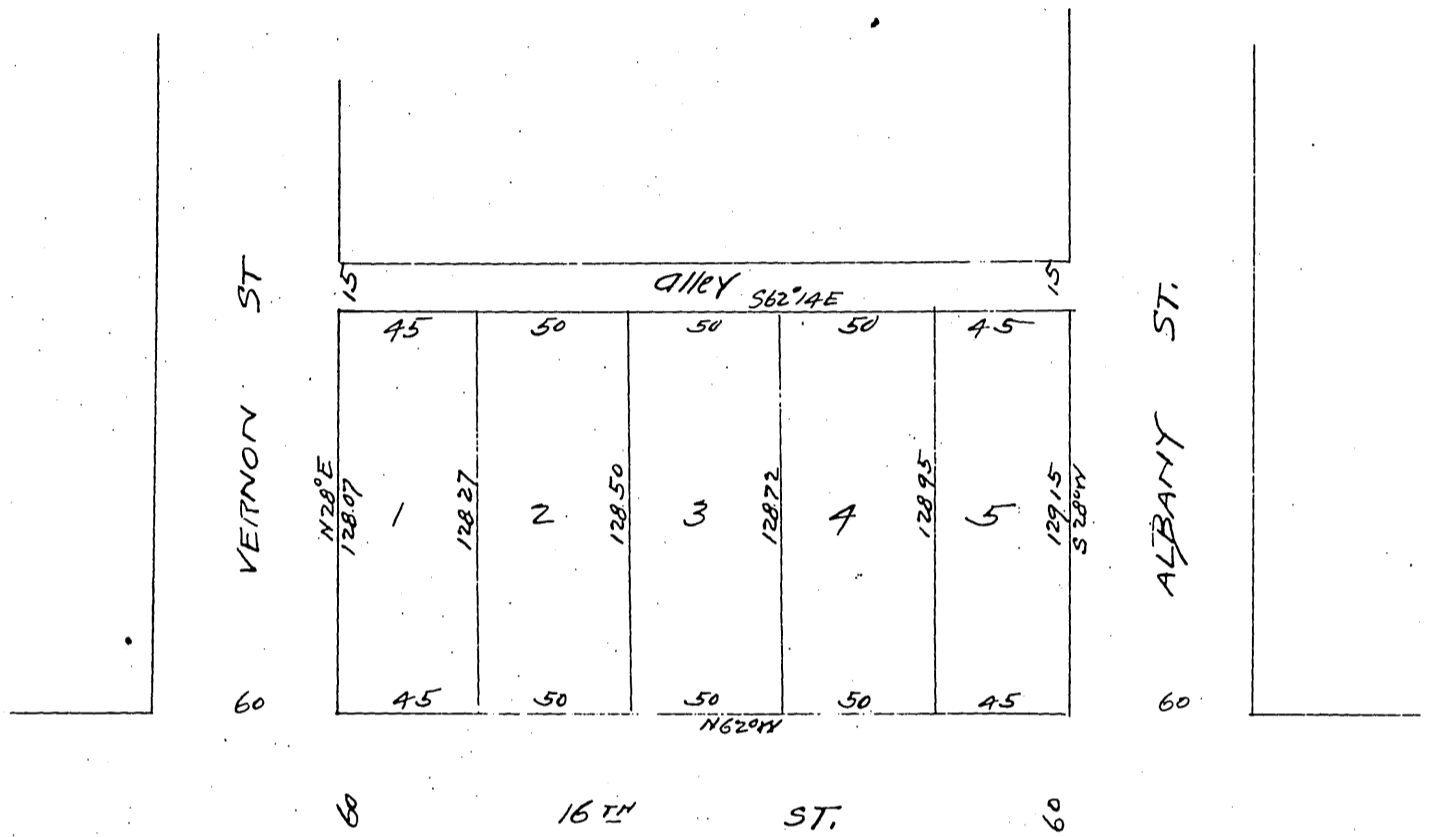


MAP
 of the Re-Subdivision of
 lots 10, 11, 12 & 13, Block 2
 of the
Greenwell Tract
 as recorded in Book 12 Page 70 Miscellaneous Records
 L. A. Co. Cal.
 Scale 1 in 60 ft.
 E. G. Jones C. E.



Corrected (L. H. Francisco)

A full true and correct copy of the original
 Recorded Feb 6 1897 at 59 min past 11 am
 at request of L. H. Francisco.

E. C. Hodgman, County Recorder.
 By E. T. Wright, County Surveyor.

E. G. Jones being duly sworn deposes and says that he is the E. G. Jones C. E. who surveyed the property of a
 W. Francisco being Lots 10, 11, 12 and 13 in Block 3 of the Greenwell tract in the City of Los Angeles, County of Los Angeles State
 of California as per map recorded in Book 12 Page 70 Miscellaneous Records of said County and that he prepared the map of such
 survey entitled "Map of the Re-Subdivision of lots 10, 11, 12 and 13 Block 2 of the Greenwell tract" etc. recorded in Book 60 Page
 66 of said Miscellaneous Records, that through inadvertence and by clerical error the title of said last mentioned map
 describes the same as being a Re-Subdivision of certain lots in Block 2 of said Greenwell Tract whereas in fact it is a
 Re-Subdivision of lots 10, 11, 12 and 13 in Block 3 of said Greenwell Tract.

This affidavit is made as a appendix to the map recorded in Book 60 page 66 of said Miscellaneous Records and to
 correct therefore said error in title.
 E. G. Jones,

A full true and correct copy of the original
 Recorded Jul 12 1902 at 40 min past 11 a.m.
 at request of affiant

R. D. Wade County Recorder.
 By A. L. Austin Deputy