

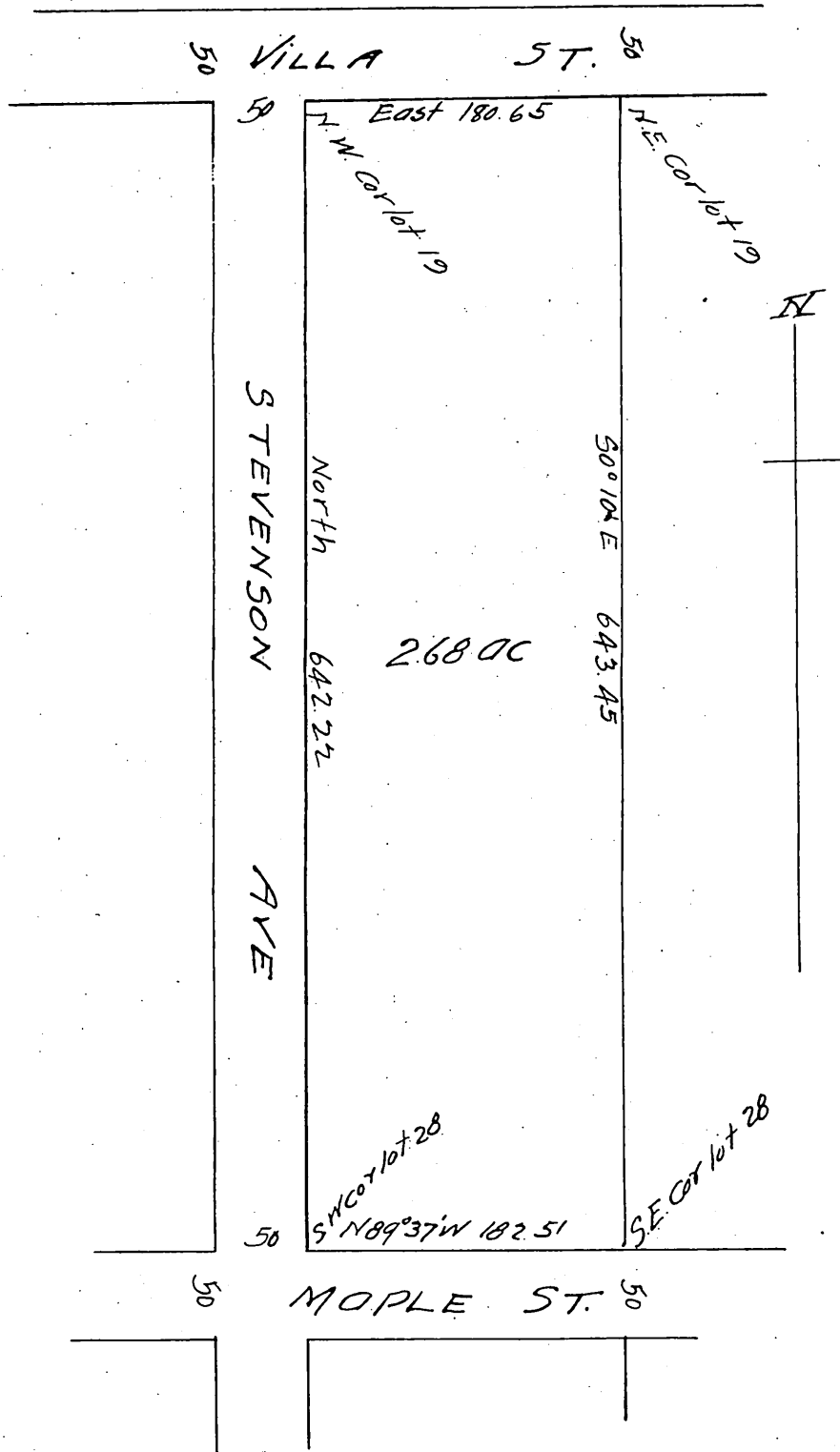
C.C. Brown's RePlat.

Returning to Acreage
Lots 19 to 28 inclusive of C.C. Brown's Subdivision of
Lots 1, 2 & 3, Block 6 of the Mutual Orchard Co.

San Pasqual Tract

as shown on Map Book 14 Page 70 Miscellaneous
Records of Los Angeles Co.

Scale 100 ft to 1 inch.



(Witness) C.C. Brown.

A full true and correct copy of the original
Recorded Feb 27, 1897 at 24 min past 3 P.M.
at request of C.C. Brown.
E.C. Hodgman County Recorder
By E.T. Wright Co. Surveyor.