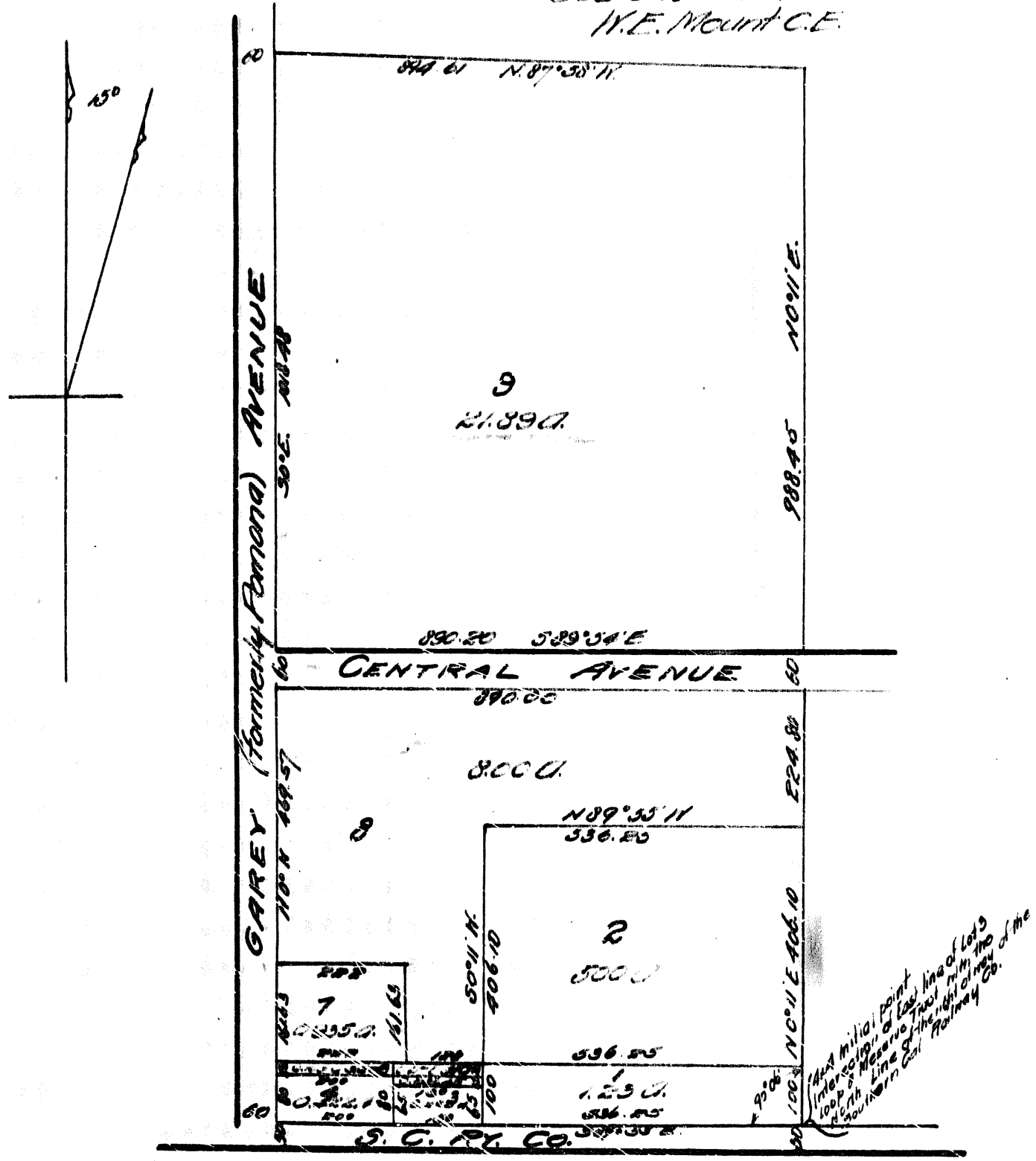


In the City of Pomona  
**RE-PLAT**  
 of  
**E. Parsons' Subdivision**

of  
**Lots 2 & 3**  
 Loop & Reserve Tract  
 Rancho San Jose  
 Los Angeles Co. Cal.

NOTE: All areas include to centre of Arteries  
 Scale 200 feet = 1 inch  
 N.E. Mount C.E.



The Clemental Fruit Growers Assn.  
 by D. E. Teague, presdt.  
 Jamies Parsons' Ex-Exec.  
 Wm J Richards  
 Sarah J. Sears  
 by H.S. Richards her atty in fact.  
 Catherine G. Foster  
 by H.S. Richards her atty in fact.  
 E. Parsons

For Central Ave. - See C.S.B. 147-7  
 For Garey Ave widening see FM-20125  
 Central Ave. changed to Bonita Ave. - E: 211-20

(Scale reduced to 300 ft. = 1 inch)  
 Recorded Nov. 1, 1897 at 9 Min past 9 A.M.  
 at request of U. E. Beckard.

Sht. 49-B  
 A-386