

MAP

of the

LasCasitas de la Sierra or Mountain Home Tract

Situated in N Pasadena on the E 1/2 of S W 1/4 Sec 32 T 2 N R 12 W.

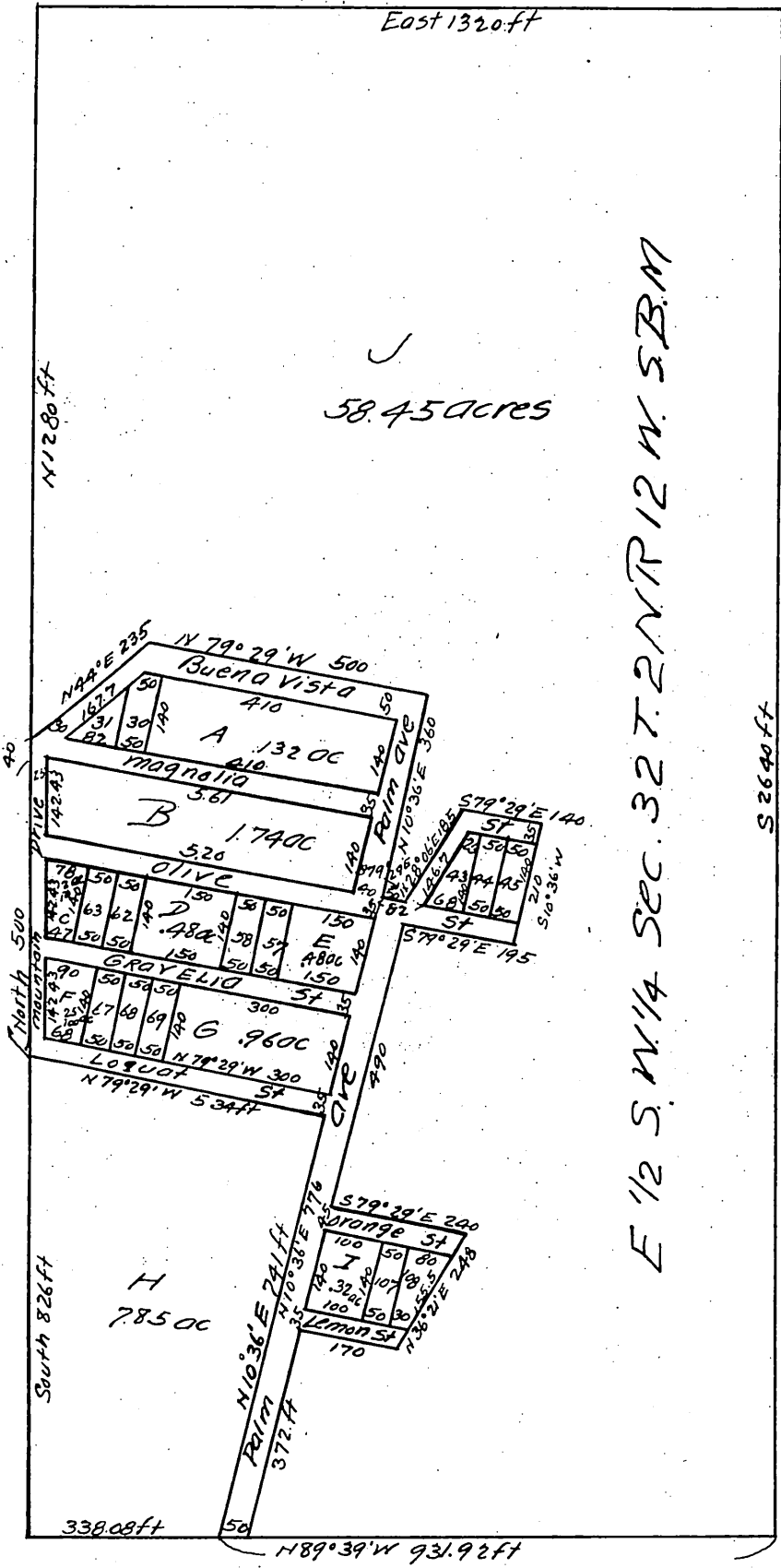
County of Los Angeles Calif.

Surveyed by John Goldsworthy, Surveyor

for James Cambell, John B. Miles and Howard W. Mills

Var 14° 15' E Scale 1 in = 200 feet

original survey made in the Year 1885
John Goldsworthy Surveyor.



I hereby certify that lots 30, 31, 43, 44, 45, 57, 58, 62, 63, 67, 68, 69, 107 and 108 are the same lots deeded by said numbers before map of this tract was recorded.

Jas H. Cambell
march 1, 1897

1/2 sec cor on S by sec 32
T. 2. N. R. 12. W. S. B. M.

a full, true and correct copy of the original
(Scale reduced to 300 ft to one inch)
Recorded Mar 1 1897 at 7 min past 9 am
at request of J. H. Campbell.
E. C. Hodgman county Recorder
By E. T. Wright co Surveyor.