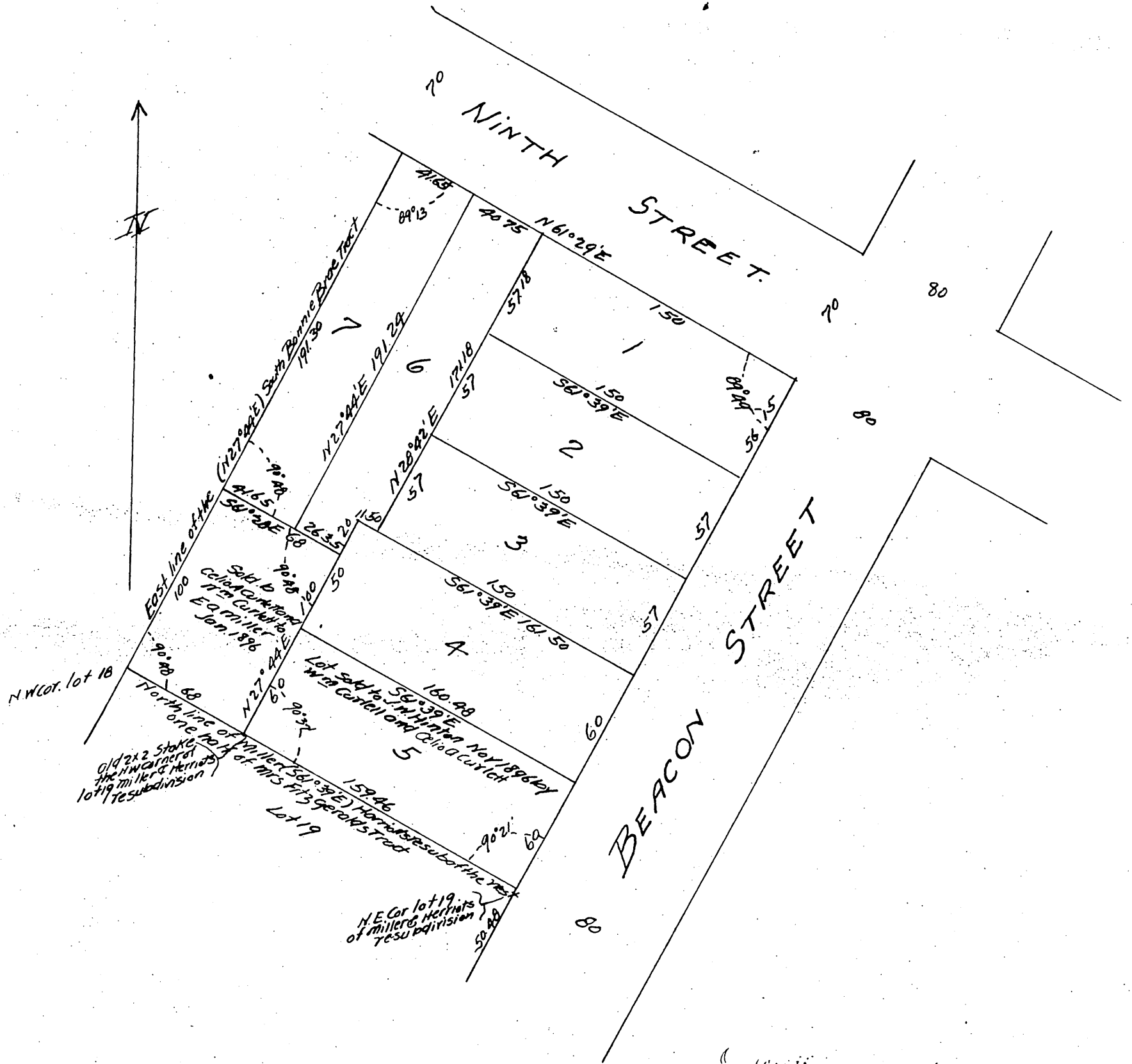


MAP of Curlett Tract

being a
Subdivision of a portion of lot 3, Block 36 Hancock's Survey of 3.5 acre Donation
Lots located in the City of Los Angeles State of California.
Scale 30 feet to one inch.
True Courses Var 14° 30' E
All distances in feet
Surveyed February, 1897
by V. J. Roman
Licensed Surveyor.



Witness:
William Curlett
Celia W. Curlett
J. M. Hinton

A full true and correct copy of the original,
(Scale reduced to 60 ft to 1 inch,
Recorded Mar 1 1897 at 39 min past 10 a.m
at request of J. M. Hinton.

E. C. Hodgman County Recorder.
By E. T. Wright Co Surveyor.