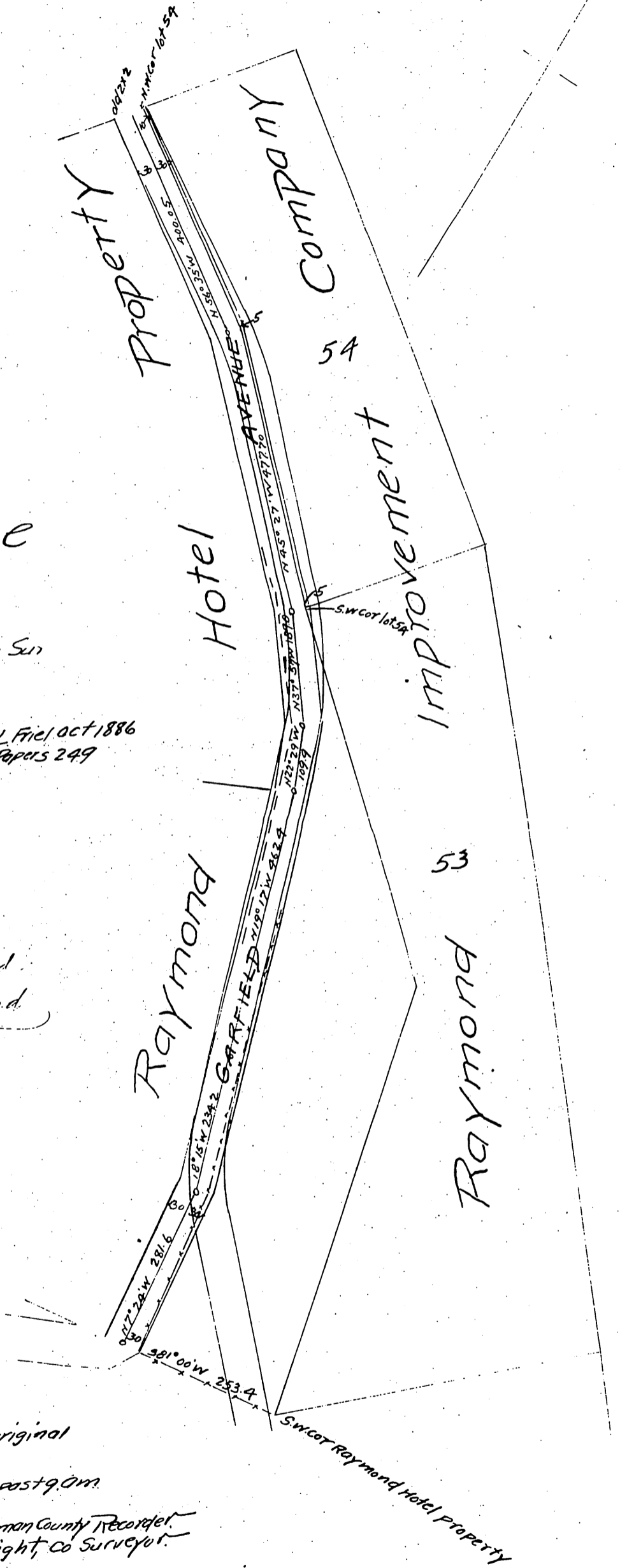


MAP
 Showing change in
Garfield Avenue
 through lands of
 Walter Raymond.
 Located May 1895 by E.T. Wright Co Sur
 Scale 100ft to lin.

Note { Blue lines showing Garfield Ave as located by L. Friel Oct 1886
 and accepted by Board of Supervisors See Rodd Papers 249

Owner: Walter Raymond
 Walter S. Raymond



A full true and correct copy of the original
 (Scale reduced to 200ft - lin)
 Recorded Mar 26, 1897 at 25 min past 9 am
 at request of T. I. E. Co
 E.C. Hodgman County Recorder
 By E.T. Wright, Co Surveyor.