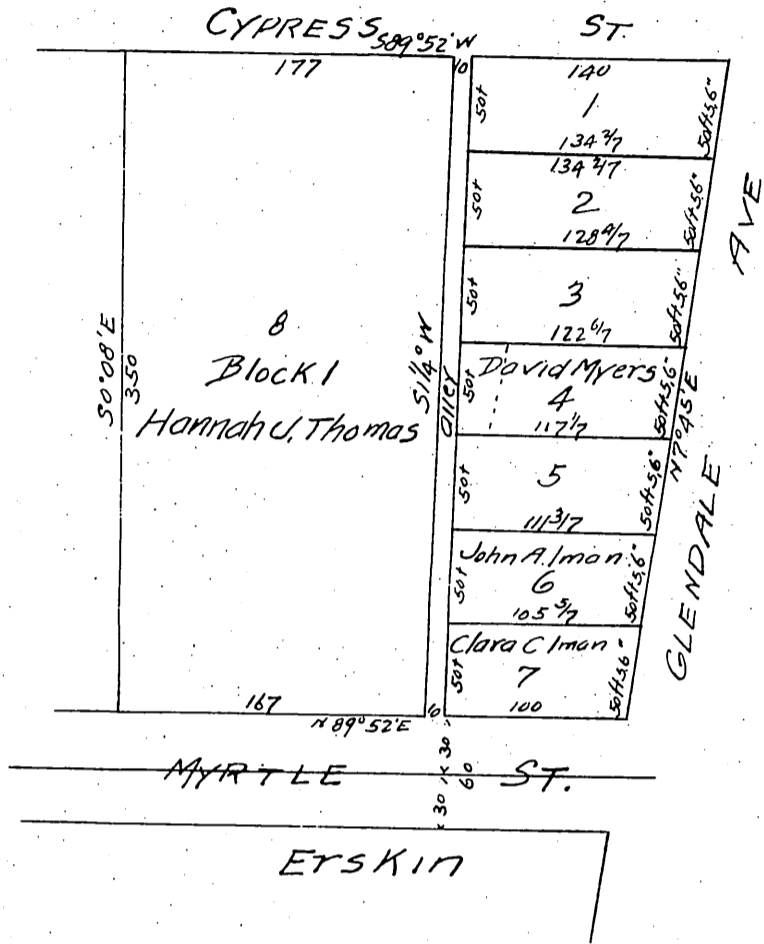


Thomas Subdivision of Block 1 of
A Chanders Re-plat of Blocks 1 and 2.
Villa Dell Tract



Witnesses:
 David Myers
 Clara C. Iman
 John A. Iman
 Hannah U. Thomas

A full, true and correct copy of the original,
 (Scale reduced to 100ft = 1 inch)
 Recorded Apr 2, 1897 at 5 min past 10 am,
 at request of N.C. Butch,

E.C. Hodgman County Recorder
 By E.T. Wright Co Surveyor,